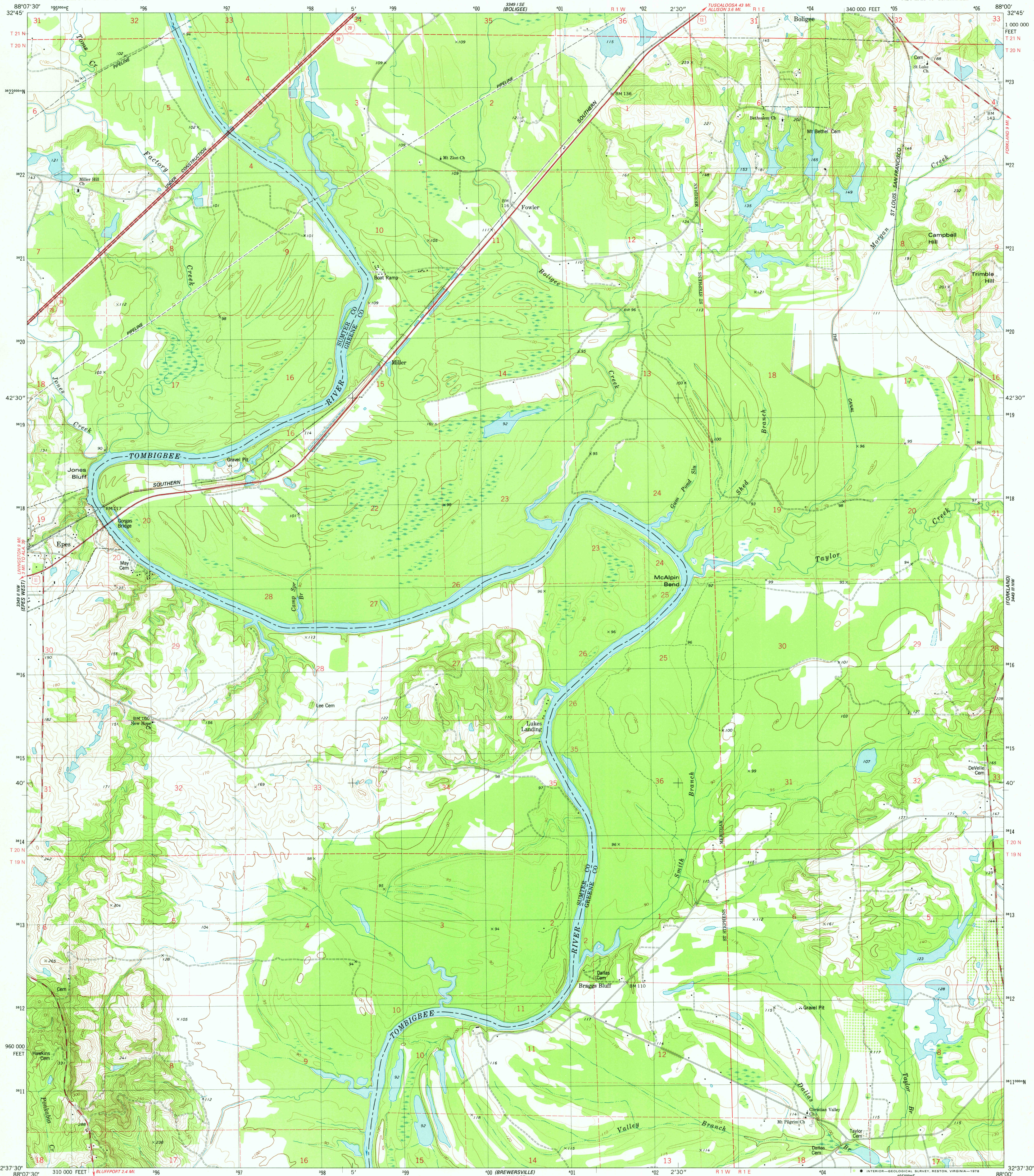
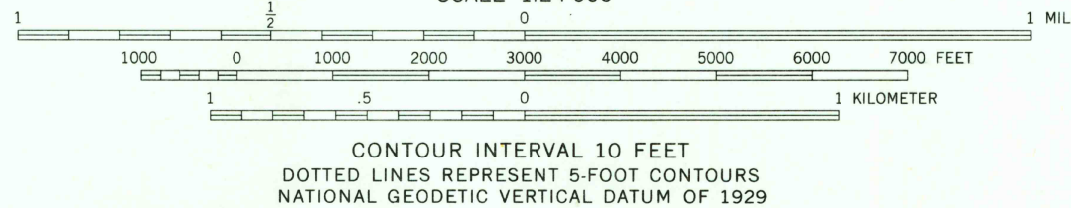
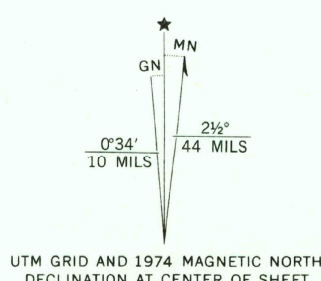


UNITED STATES  
DEPARTMENT OF THE INTERIOR  
GEOLOGICAL SURVEY

EPES EAST QUADRANGLE  
ALABAMA  
7.5 MINUTE SERIES (TOPOGRAPHIC)  
NE/4 EPES 15' QUADRANGLE



Mapped, edited, and published by the Geological Survey  
Control by USGS, NOS/NOAA, and USCE  
Topography by photogrammetric methods from aerial  
photographs taken 1973-74. Field checked 1974  
Projection and 10,000-foot grid ticks: Alabama coordinate  
system, west zone (transverse Mercator)  
1000-meter Universal Transverse Mercator grid, zone 16  
1927 North American datum  
Fine red dashed lines indicate selected fence and field lines where  
generally visible on aerial photographs. This information is unchecked



THIS MAP COMPLIES WITH NATIONAL MAP ACCURACY STANDARDS  
FOR SALE BY U. S. GEOLOGICAL SURVEY, RESTON, VIRGINIA 22092  
A FOLDER DESCRIBING TOPOGRAPHIC MAPS AND SYMBOLS IS AVAILABLE ON REQUEST



ROAD CLASSIFICATION  
Primary highway, hard surface  
Secondary highway, hard surface  
Light-duty road, hard or improved surface  
Unimproved road  
Interstate Route  
U. S. Route  
State Route

USGS  
Historical File  
Topographic Division

EPES EAST, ALA.  
NE/4 EPES 15' QUADRANGLE  
N3237.5 - W8800/7.5  
1974

AMS 3349 II NE-SERIES W844

JAN 16 1978

2800