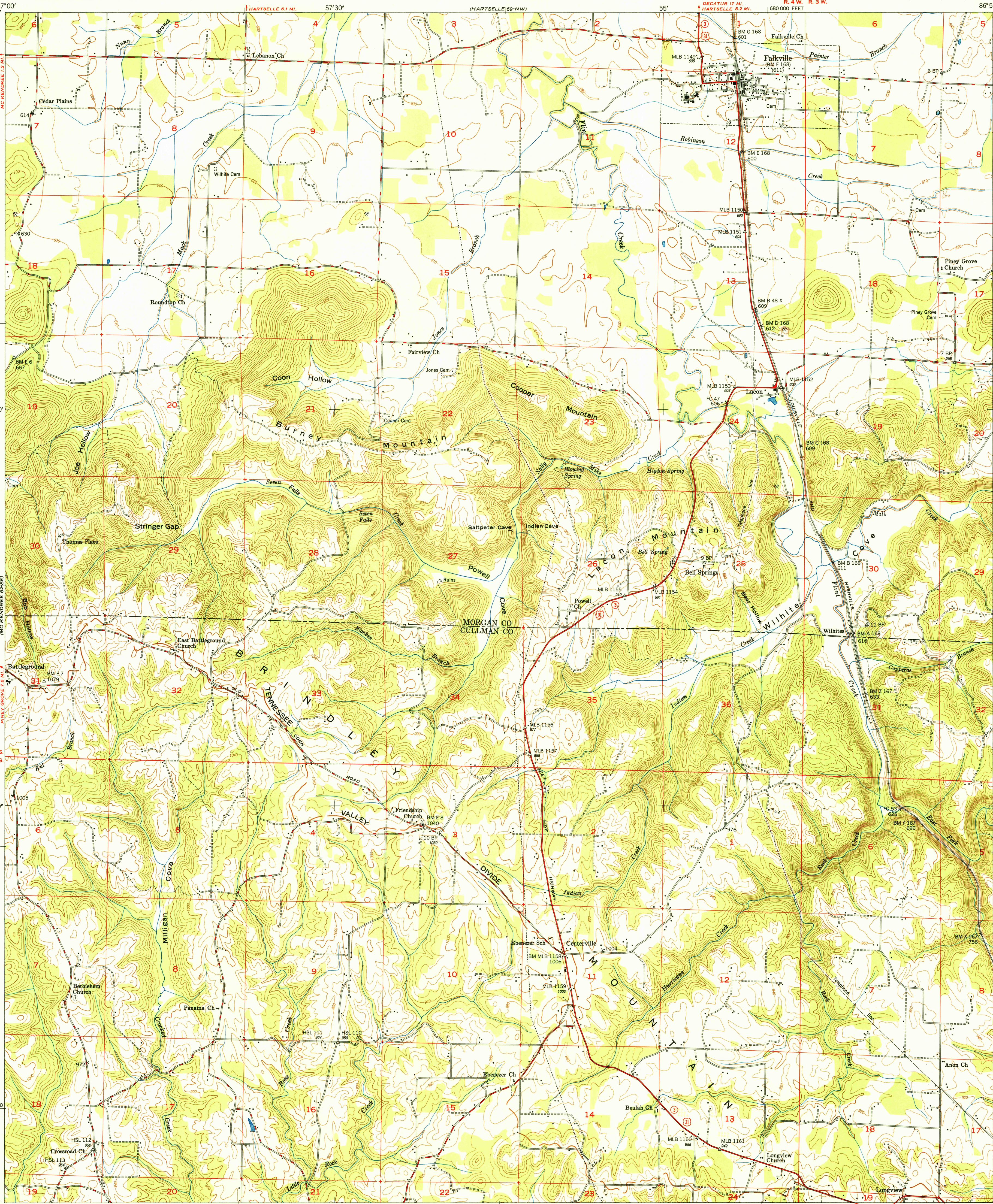


UNITED STATES
DEPARTMENT OF THE INTERIOR
GEOLOGICAL SURVEY

U.S.G.S.
FILE COPY
Inspection and Editing

UNITED STATES
TENNESSEE VALLEY AUTHORITY
MAPS AND SURVEYS BRANCH

FALKVILLE QUADRANGLE
ALABAMA
7.5 MINUTE SERIES (TOPOGRAPHIC) 69-SW



Maped and edited by Tennessee Valley Authority
Published by the Geological Survey
Basic control by USC&GS, USGS, and TVA
Topography by USGS and TVA by multiplex and planetable
methods from aerial photographs taken 1946
Field examination by TVA, 1949
Polyconic projection, 1927 North American datum
10,000-foot grid based on Alabama (West) rectangular
coordinate system

TRUE NORTH
MAGNETIC NORTH
APPROXIMATE MEAN
DECLINATION 1949

SCALE 1:24,000
1 0 1000 2000 3000 4000 5000 6000 7000 FEET
1 5 0 1 KILOMETER

CONTOUR INTERVAL 20 FEET
DASHED LINES REPRESENT HALF-INTERVAL CONTOURS
DATUM IS MEAN SEA LEVEL

THIS MAP COMPLIES WITH NATIONAL MAP ACCURACY STANDARDS
FOR SALE BY U. S. GEOLOGICAL SURVEY, WASHINGTON 25, D. C.
AND BY U. S. TENNESSEE VALLEY AUTHORITY, CHATTANOOGA OR KNOXVILLE, TENN.
A FOLDER DESCRIBING TOPOGRAPHIC MAPS AND SYMBOLS IS AVAILABLE ON REQUEST

ROAD CLASSIFICATION
In developed areas, only through roads are classified
Heavy-duty ALL WEATHER ROADS DRY WEATHER ROADS
Medium-duty LANE IS LANE Improved dirt
Loose-surface, graded, or narrow hard-surface Unimproved dirt
U. S. Route State Route

U.S.G.S.
FILE COPY
Inspection and Editing

U.S.G.S.
Historical File
Topographic Division

FALKVILLE, ALA.
N3415-W8652.5/7.5
PRINTED 1951