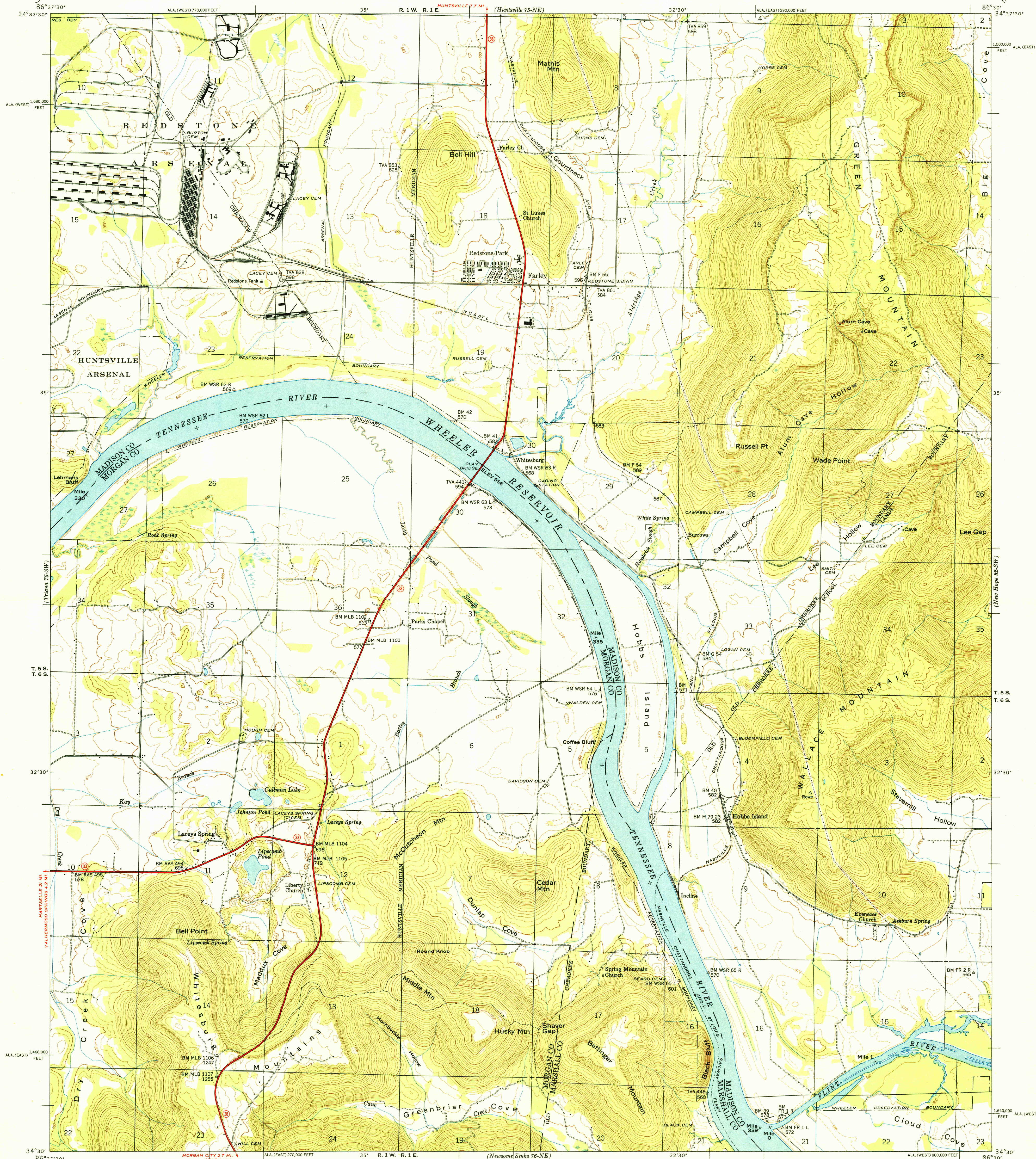


UNITED STATES  
DEPARTMENT OF THE INTERIOR  
GEOLOGICAL SURVEY

U. S. G. S.  
FILE COPY  
Inspection and Editing

UNITED STATES  
TENNESSEE VALLEY AUTHORITY  
MAPS AND SURVEYS BRANCH

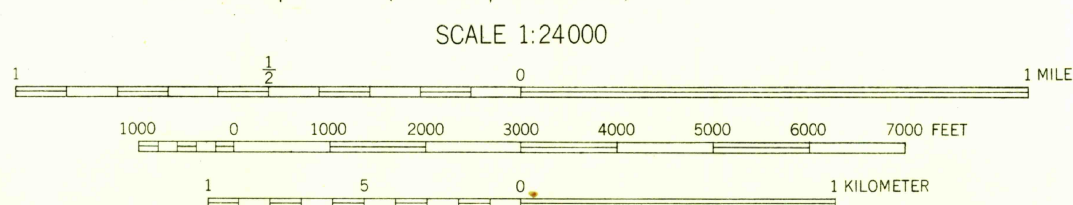
ALABAMA  
FARLEY QUADRANGLE  
75-SE



Control by USC&GS, USGS, and TVA  
Topography by USGS and TVA from aerial photographs  
by stereophotogrammetric and planimetric methods  
Field examination by Tennessee Valley Authority, 1947  
Maps distributed by the Geological Survey

THIS MAP COMPLIES WITH NATIONAL MAP ACCURACY STANDARDS

APPROXIMATE MEAN  
DECLINATION, 1960



Contour interval 20 feet  
Occasional 10 foot contours shown by broken lines  
Datum is mean sea level

USGS  
Historical File  
Topographic Division

U. S. G. S.  
FILE COPY  
Inspection and Editing

Polycyclic projection. 1927 North American datum  
10,000 foot grid based on Alabama (East) and  
Alabama (West) rectangular coordinate systems

ROUTES USUALLY TRAVELED  
HARD IMPROVED SURFACES  
OTHER SURFACE IMPROVEMENTS  
U. S. ROUTE STATE ROUTE

FARLEY, ALA.  
75-SE  
Edition of 1950  
N3430-W8630/7.5

HISTORICAL

AUG 1 1950