

3653' NW
(MADISON 75 NW)

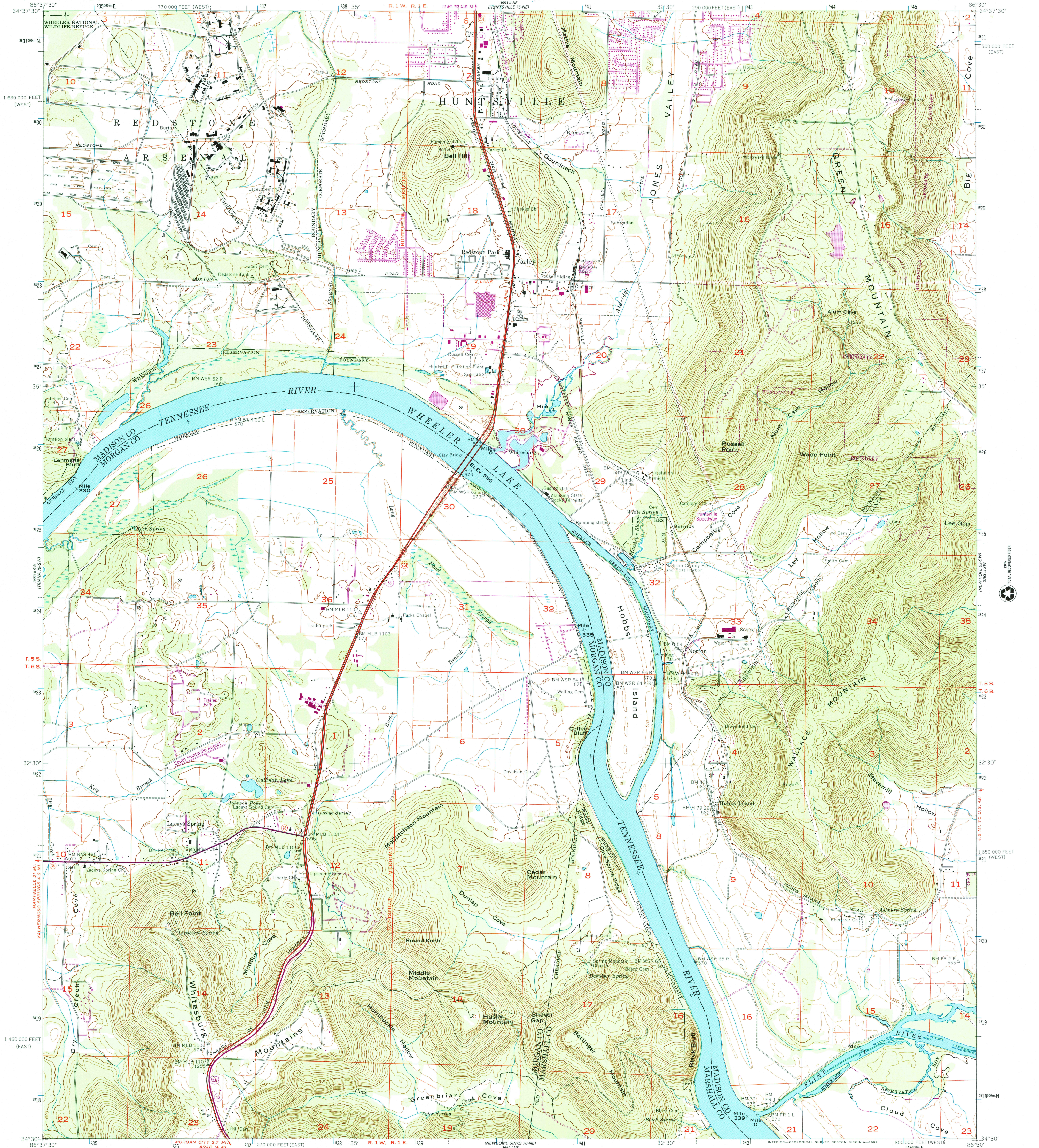


U.S. DEPARTMENT OF THE INTERIOR
U.S. GEOLOGICAL SURVEY

UNITED STATES
TENNESSEE VALLEY AUTHORITY
MAPPING SERVICES BRANCH

FARLEY QUADRANGLE
ALABAMA
7.5 MINUTE SERIES (TOPOGRAPHIC) 75-SE

3653' NW
(MADISON 75 NW)



Mapped and edited by Tennessee Valley Authority
Published by the Geological Survey
Control by NOS/NOAA, USGS, and TVA
Revised by TVA in 1964 by photogrammetric methods using
aerial photographs taken 1961 and by reference to TVA USGS
quadrangle dated 1947. Map field checked by TVA, 1964
Polyconic projection. 10,000-foot grid ticks based on
Alabama (East) and Alabama (West) coordinate systems
1000-meter Universal Transverse Mercator grid ticks, zone 16,
shown in blue. 1927 North American Datum. To place on the
predicted North American Datum 1983 move the projection
lines 8 meters south and 1 meter west as shown by
dashed corner ticks
Fine red dashed lines indicate selected fence and field lines
where generally visible on aerial photographs. This information
is unchecked.

There may be private inholdings within the boundaries of
the National or State reservations shown on this map

SCALE 1:24,000
1 1000 0 1000 2000 3000 4000 5000 6000 7000 FEET
1 1 2 3 4 5 6 7 8 9 10 KILOMETER
CONTOUR INTERVAL 20 FEET
DASHED LINES REPRESENT HALF-INTERVAL CONTOURS
NATIONAL GEODETIC VERTICAL DATUM OF 1929
THIS MAP COMPLIES WITH NATIONAL MAP ACCURACY STANDARDS
FOR SALE BY U.S. GEOLOGICAL SURVEY, P.O. BOX 25286, DENVER, COLORADO 80225
AND TENNESSEE DEPARTMENT OF CONSERVATION, DIVISION OF GEOLOGY,
NASHVILLE, TENNESSEE 37243
A FOLDER DESCRIBING TOPOGRAPHIC MAPS AND SYMBOLS IS AVAILABLE ON REQUEST



ROAD CLASSIFICATION (TVA 75-SE)
Primary highway, all weather, hard surface
Secondary highway, all weather, hard surface
Interstate Route
U. S. Route
State Route
Light-duty road, all weather, improved surface
Unimproved road, fair or dry weather
APR 21 2005
FARLEY, ALA.
N4340-W8630/7.5
1964
PHOTOREVISED 1982
DMA 3653 II SE-SERIES V844

3 1818 00503664 3
9 780607 046779