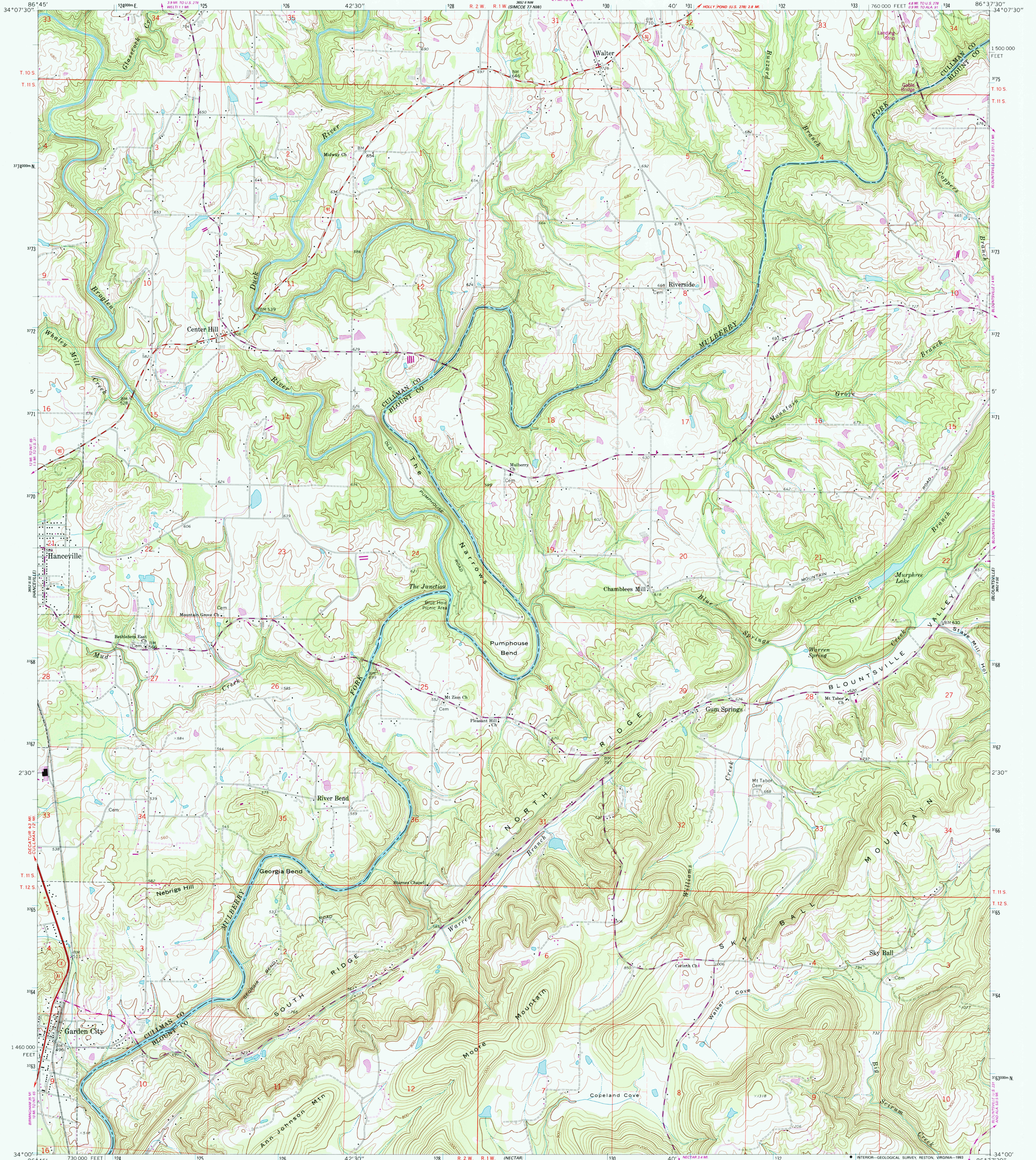


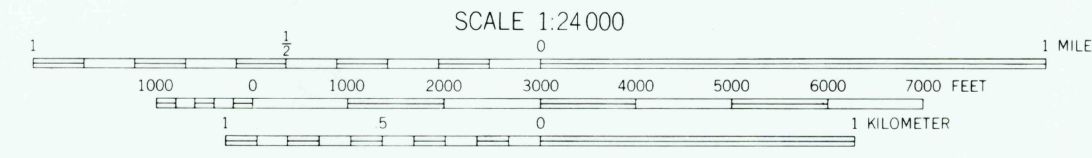
UNITED STATES  
DEPARTMENT OF THE INTERIOR  
GEOLOGICAL SURVEY

GARDEN CITY QUADRANGLE  
ALABAMA  
7.5 MINUTE SERIES (TOPOGRAPHIC)

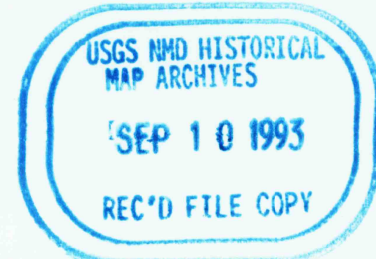


Produced by the United States Geological Survey  
Control by USGS and NOS/NOAA  
Topography by photogrammetric methods from aerial photographs  
taken 1967. Field checked 1969.  
Projection and 10,000-foot grid ticks: Alabama coordinate  
system, west zone (transverse Mercator)  
1000 meter Universal Transverse Mercator grid ticks, zone 16, shown in blue  
1927 North American Datum (NAD 27)  
North American Datum of 1983 (NAD 83) is shown by dashed corner ticks  
The values of the shift between NAD 27 and NAD 83 for 7.5-minute  
intersections are given in USGS Bulletin 1875  
Fine red dashed lines indicate selected fence and field lines where  
generally visible on aerial photographs. This information is unchecked  
Photosinspected from 1990 source; no major culture or drainage  
changes observed. Boundaries and names revised 1993

Revisions shown in purple and woodland compiled by the  
Tennessee Valley Authority from aerial photographs  
taken 1981 and other sources. This information not  
field checked. Map edited 1986



ROAD CLASSIFICATION	
Primary highway, hard surface	Light-duty road, hard or improved surface
Secondary highway, hard surface	Unimproved road
Interstate Route	U. S. Route
	State Route



GARDEN CITY, ALA.  
34086-A6-TF-024  
1969  
PHOTOREVISED 1986  
MINOR REVISION 1993  
DMA 3652 II SW - SERIES V844