

(Stereograph 89-SW)

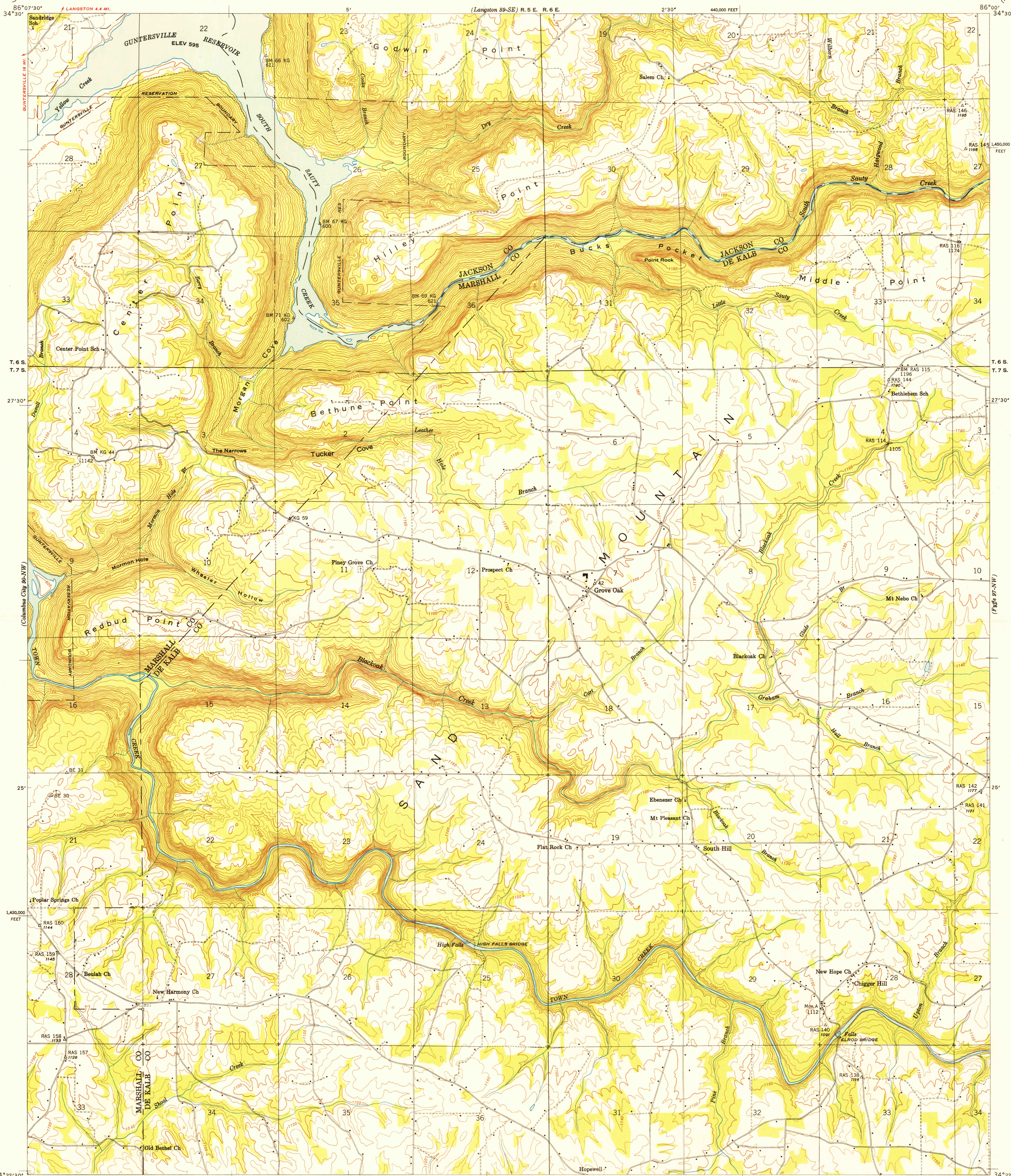
UNITED STATES  
DEPARTMENT OF THE INTERIOR  
GEOLOGICAL SURVEY

U. S. G. S.  
FILE COPY  
Inspection and Editing

UNITED STATES  
TENNESSEE VALLEY AUTHORITY  
MAPS AND SURVEYS BRANCH

ALABAMA  
GROVE OAK QUADRANGLE  
90-NE

(Datum 96-SW)

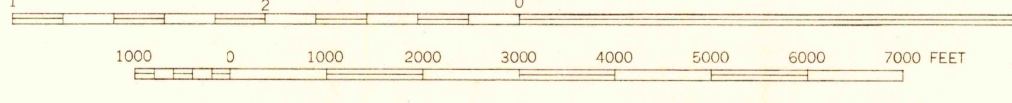


(Albertville 90-SW)

Control by USC&GS, USGS, and TVA  
Topography by USGS and TVA from aerial  
photographs by stereophotogrammetric methods  
Field examination by Tennessee Valley Authority, 1946  
Maps distributed by the Geological Survey

TRUE NORTH  
MAGNETIC NORTH  
APPROXIMATE MEAN  
DECLINATION, 1949

SCALE 1:24000



Contour interval 20 feet  
Datum is mean sea level

U. S. G. S.  
FILE COPY  
Inspection and Editing  
HISTORICAL

USGS  
Historical File  
Topographic Division

GROVE OAK, ALA.  
90-NE

Edition of 1949  
N3422.5-W8600/7.5

ROUTES USUALLY TRAVELED  
HARD IMPROVED SURFACES  
OTHER SURFACE IMPROVEMENTS  
U. S. ROUTE STATE ROUTE

Polyconic projection. 1927 North American datum  
10,000 foot grid based on Alabama (East)  
rectangular coordinate system

JUNCTION 10 1.1 MI.  
GERALDINE 1.7 MI.

JAN 24 1959

2120