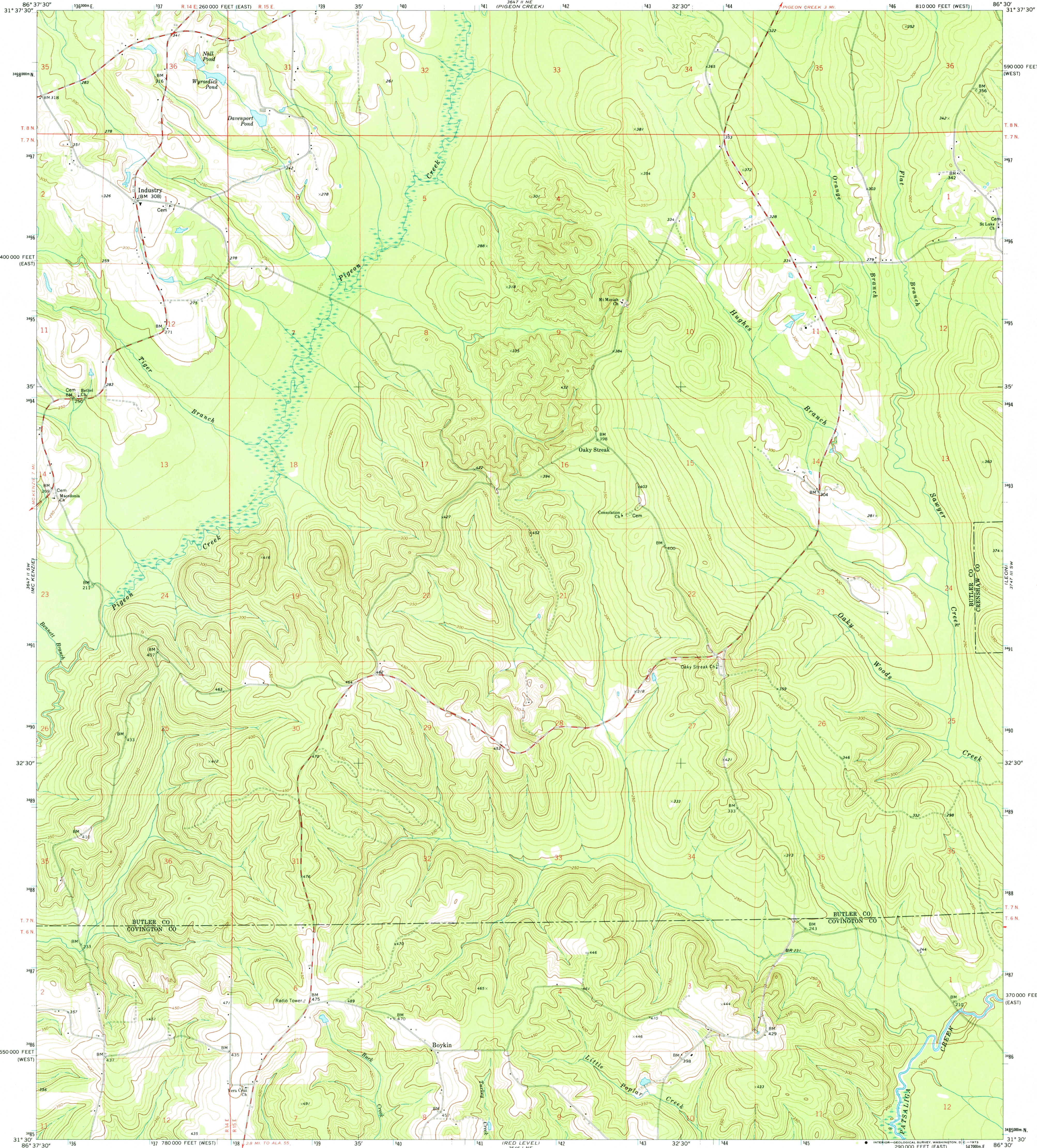


UNITED STATES  
DEPARTMENT OF THE INTERIOR  
GEOLOGICAL SURVEY

INDUSTRY QUADRANGLE  
ALABAMA  
7.5 MINUTE SERIES (TOPOGRAPHIC)



Mapped, edited, and published by the Geological Survey

Control by USGS, USC&GS, and USCE

Topography by photogrammetric methods from aerial photographs taken 1968. Field checked 1971

Polyconic projection. 1927 North American datum  
10,000-foot grids based on Alabama coordinate system,  
west and east zones  
1000-meter Universal Transverse Mercator grid ticks,  
zone 16, shown in blue

Fine red dashed lines indicate selected fence and field lines where  
generally visible on aerial photographs. This information is unchecked

UTM GRID AND 1971 MAGNETIC NORTH  
DECLINATION AT CENTER OF SHEET

SCALE 1:24,000

CONTOUR INTERVAL 10 FEET  
DATUM IS MEAN SEA LEVEL

ROAD CLASSIFICATION

Primary highway, hard surface  
Secondary highway, hard surface  
Light-duty road, hard or improved surface  
Unimproved road  
Interstate Route  
U. S. Route  
State Route



THIS MAP COMPLIES WITH NATIONAL MAP ACCURACY STANDARDS  
FOR SALE BY U. S. GEOLOGICAL SURVEY, WASHINGTON, D. C. 20242  
A FOLDER DESCRIBING TOPOGRAPHIC MAPS AND SYMBOLS IS AVAILABLE ON REQUEST

INDUSTRY, ALA.  
N3130-W8630/7.5

1971

AMS 3647 II SE-SERIES V844