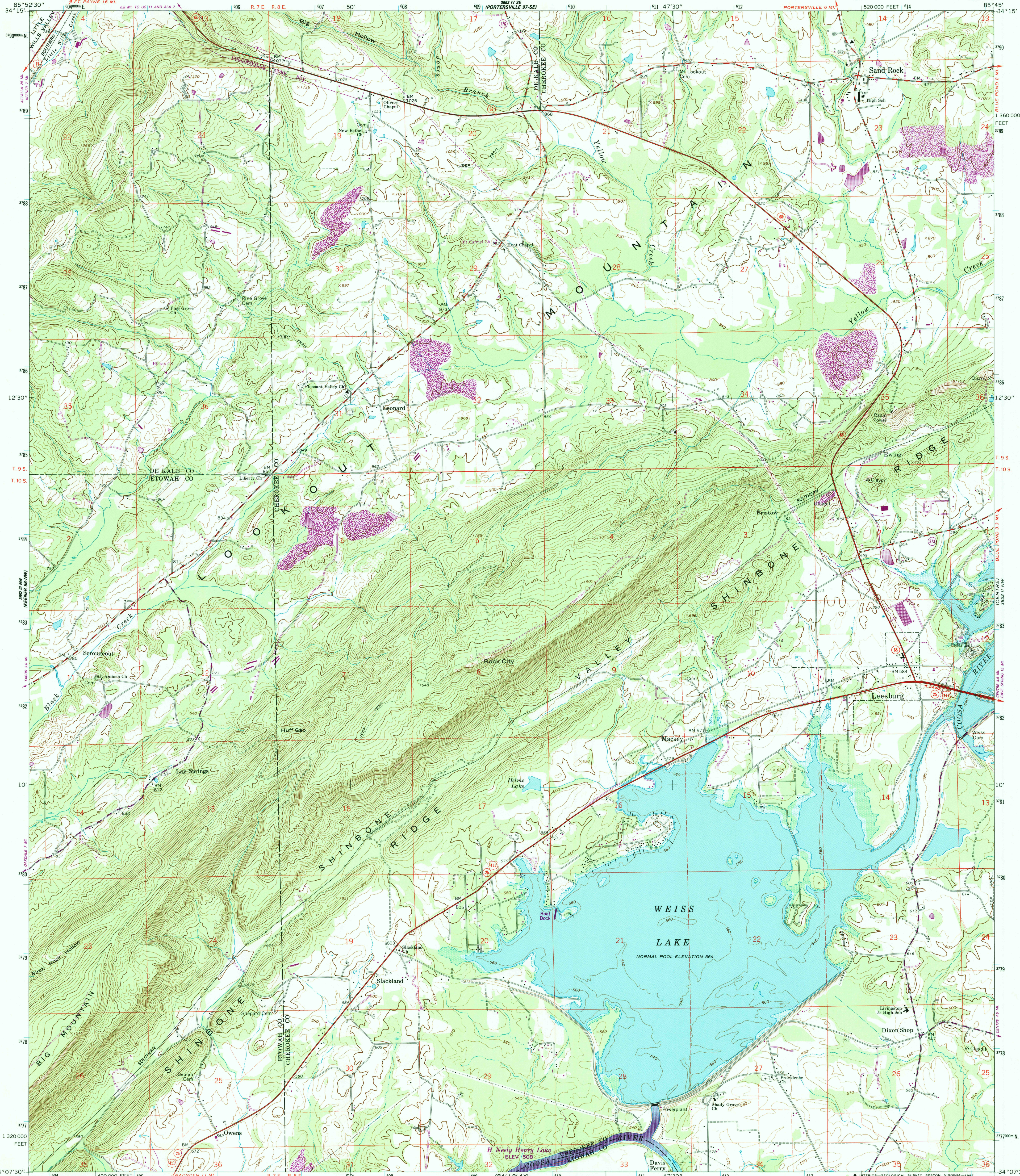


UNITED STATES
DEPARTMENT OF THE INTERIOR
GEOLOGICAL SURVEY

LEESBURG QUADRANGLE
ALABAMA
7.5 MINUTE SERIES (TOPOGRAPHIC)



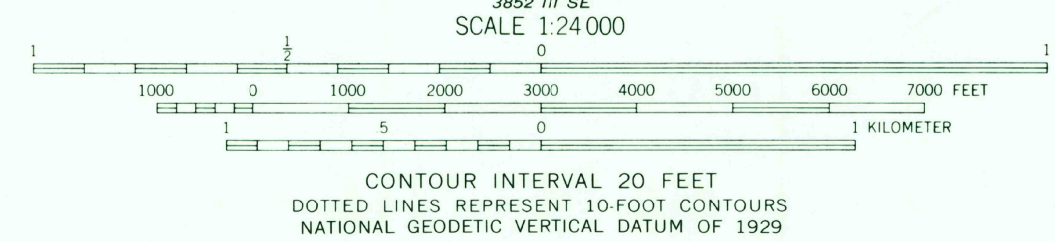
Maped, edited, and published by the Geological Survey
Control by USGS, NOS/NOAA, USCE, and Alabama Power Company

Topography by photogrammetric methods from aerial
photographs taken 1965. Field checked 1967

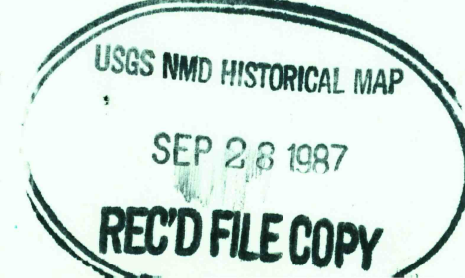
Polycyclic projection. 10,000-foot grid ticks based on
Alabama coordinate system, east zone
1000-meter Universal Transverse Mercator grid ticks,
zone 16, shown in blue. 1927 North American Datum
To place on the predicted North American Datum 1983
move the projection lines 9 meters south and
4 meters west as shown by dashed corner ticks

Fine red dashed lines indicate selected fence and field lines where
generally visible on aerial photographs. This information is unchecked
Areas covered by dashed light-blue pattern are subject to
controlled inundation

Revisions shown in purple and woodland compiled by the
Tennessee Valley Authority from aerial photographs
taken 1981 and other sources. This information not
field checked. Map edited 1986



ROAD CLASSIFICATION
Primary highway, all weather, hard surface
Secondary highway, all weather, hard surface
Light-duty road, all weather, improved surface
Unimproved road, fair or weather
Interstate Route
U. S. Route
State Route



LEESBURG, ALA.
34085-B7-TF-024

1967
PHOTOREVISED 1986
DMA 3852 III NE-SERIES V 844

RETURN TO:
USGS AND HISTORICAL MAP ARCHIVES