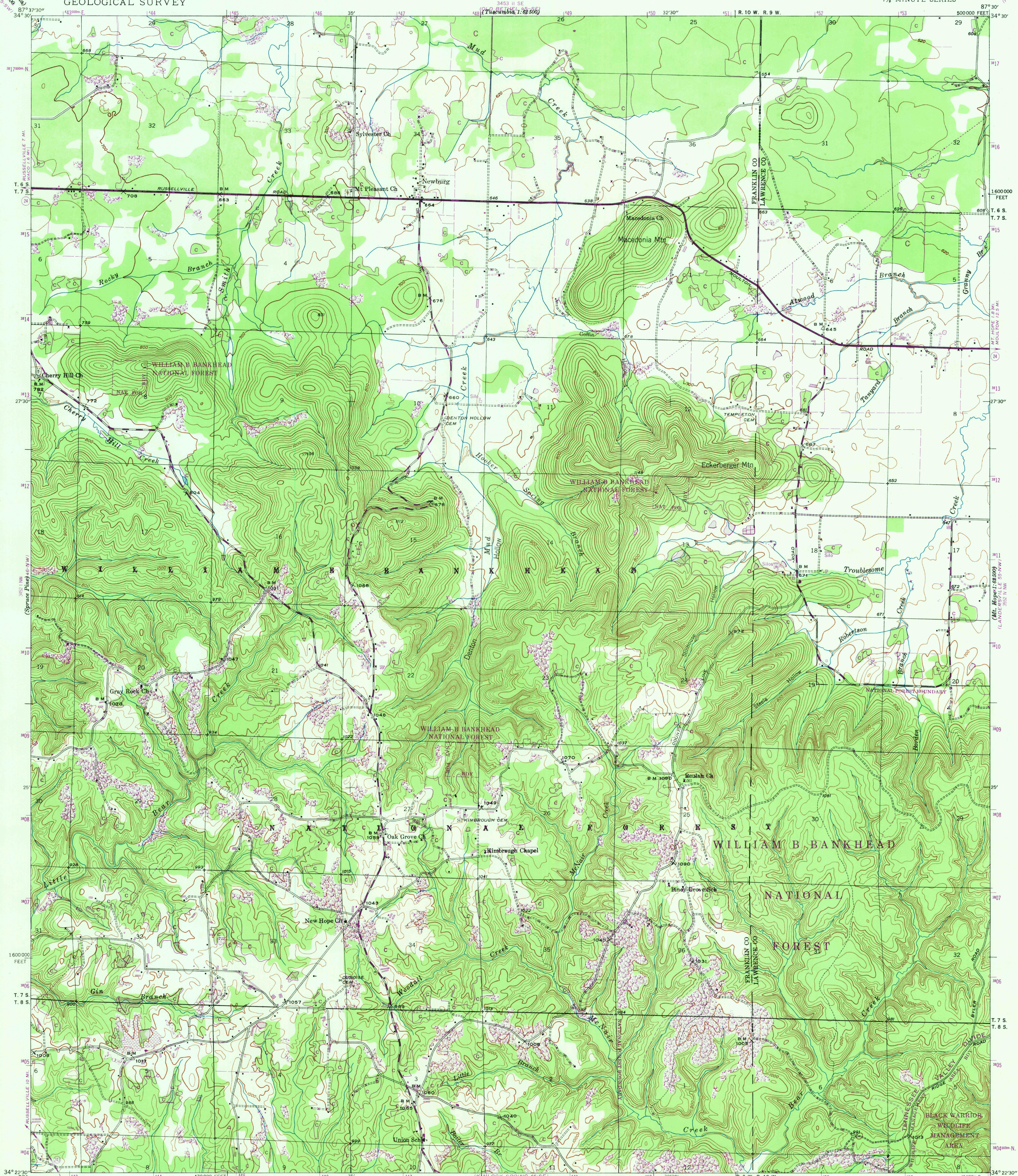
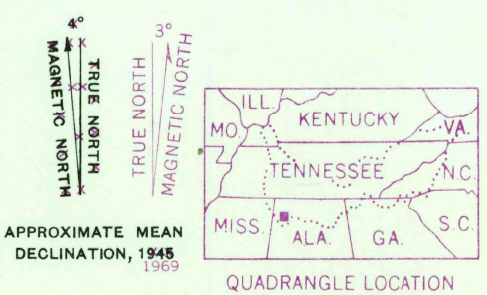


DEPARTMENT OF THE INTERIOR  
GEOLOGICAL SURVEY

ALABAMA  
NEWBURG QUADRANGLE  
7½-MINUTE SERIES



Mapped by the Geological Survey  
1945  
ROAD CLASSIFICATION  
Heavy-duty ——— Light-duty ———  
Medium-duty ——— Unimproved dirt ———  
1000-meter Universal Transverse Mercator grid ticks,  
zone 16, shown in purple  
Grid declination 0°19' 6" West  
Revisions in purple compiled by TVA, December 1967 from  
April 1967 photography without field examination



FOR SALE BY U. S. GEOLOGICAL SURVEY, WASHINGTON, D. C. 20242,  
AND U. S. TENNESSEE VALLEY AUTHORITY, CHATTANOOGA, TENN. 37401 OR KNOXVILLE, TENN. 37902.  
A FOLDER DESCRIBING TOPOGRAPHIC MAPS AND SYMBOLS IS AVAILABLE ON REQUEST

LEGEND

- Fence and field line
- Stream
- Pond and dam
- Strip mine
- Woodland (formerly clearing)
- Clearing (formerly woodland)
- General deletion
- Heavy-duty road
- Medium-duty road
- Light-duty road
- Poor motor road
- Wagon and jeep track
- Foot trail

U.S.G.S.  
FILE COPY  
TOPOGRAPHIC DIVISION

NEWBURG, ALA.  
N 3422.5—W 8730/7.5  
USGS 1945  
Historical File  
Topographic Division  
1815  
OCT 20 1969  
46-NE  
AMS 3452 I NE SERIES 1684