

(Tucumbia)
1:62,500
T. 6 S.
T. 7 S.
R. 10 W.
R. 9 W.

DEPARTMENT OF THE INTERIOR
GEOLOGICAL SURVEY

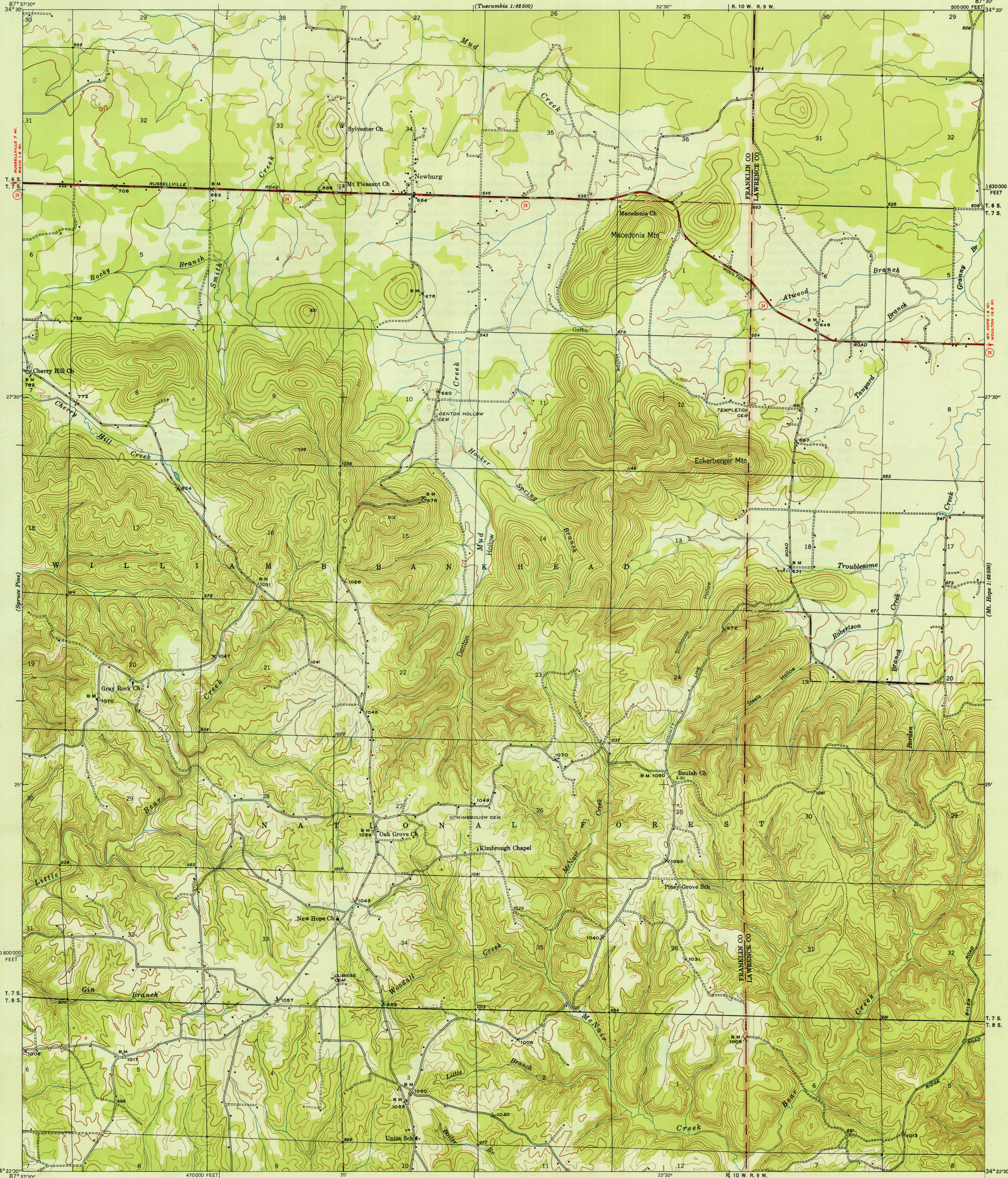
U. S. G. S.
FILE COPY
Inspection and Editing.

ALABAMA
NEWBURG QUADRANGLE
7 1/2-MINUTE SERIES

(Tucumbia 1:62,500)

R. 10 W. R. 9 W.

500,000 FEET



Mapped by the Geological Survey
1945

(Phil Campbell)

ROAD CLASSIFICATION
1947
Dependable hard surface
Secondary hard surface
at weather road
More than two lanes indicated along road with tick at point of change
U. S. Road
Loose-surface graded
Unsurfaced, graded
Dirt road
State Road

TRUE NORTH
MAGNETIC NORTH
APPROXIMATE MEAN
DECLINATION, 1945

Scale 1:24,000
0 1000 2000 3000 4000 5000 6000 7000 8000 9000 10000
0 1 2 3 4 5 6 7 8 9 10
Kilometer
Contour interval 20 feet
Datum is mean sea level

U. S. G. S.
FILE COPY
Inspection and Editing.
HISTORICAL

Polyconic projection. 1927 North American datum
10000 foot grid based on Alabama (West)
rectangular coordinate system
USGS
Historical File
Topographic Division
NEWBURG, ALA.
Edition of 1947
N 3422.5-W 8730.7/5
JAN 27 1948