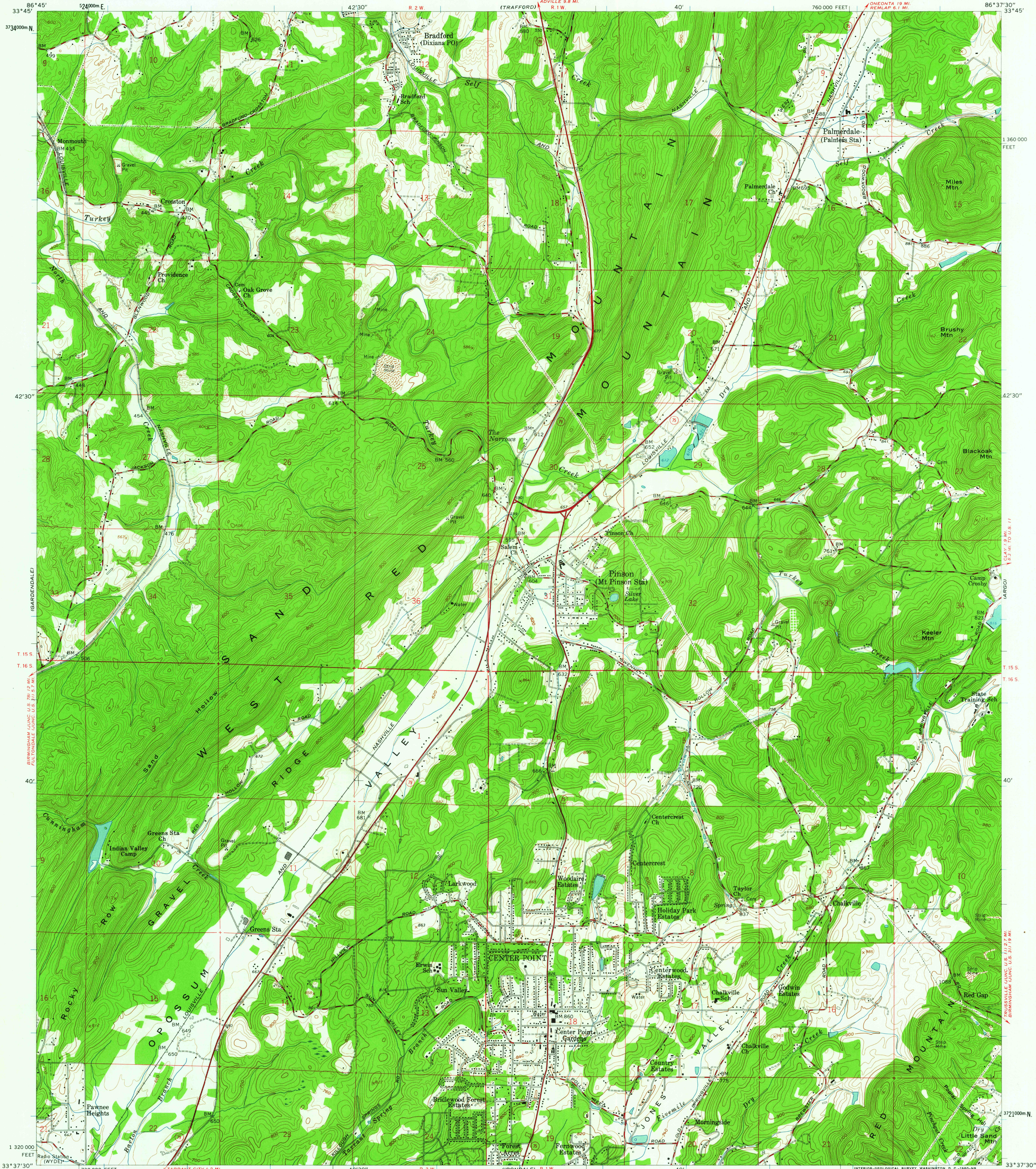


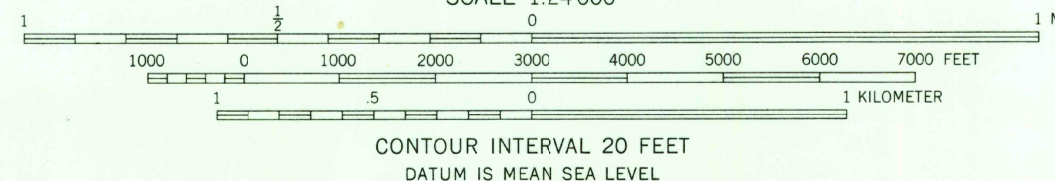
UNITED STATES
DEPARTMENT OF THE INTERIOR
GEOLOGICAL SURVEY

PINSON QUADRANGLE
ALABAMA-JEFFERSON CO.
7.5 MINUTE SERIES (TOPOGRAPHIC)
NW 1/4 LEEDS 15' QUADRANGLE

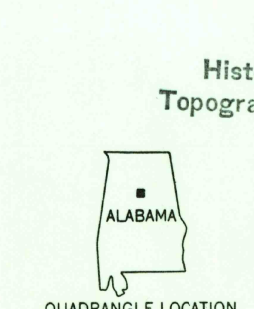


Mapped, edited, and published by the Geological Survey
Control by USGS, USC&GS, USCE, and Alabama Geodetic Survey
Topography from aerial photographs by photogrammetric methods
Aerial photographs taken 1957. Field check 1959
Polyconic projection. 1927 North American datum
10,000-foot grid based on Alabama coordinate system,
west zone
1000-meter Universal Transverse Mercator grid ticks,
zone 16, shown in blue
Unchecked elevations are shown in brown

TRUE NORTH
MAGNETIC NORTH
APPROXIMATE MEAN
DECLINATION, 1959



THIS MAP COMPLIES WITH NATIONAL MAP ACCURACY STANDARDS
FOR SALE BY U. S. GEOLOGICAL SURVEY, WASHINGTON 25, D. C.
A FOLDER DESCRIBING TOPOGRAPHIC MAPS AND SYMBOLS IS AVAILABLE ON REQUEST



USGS
Historical File
Topographic Division

ROAD CLASSIFICATION
Heavy-duty ——— Light-duty ———
Medium-duty ——— Unimproved dirt ———
○ State Route

U.S.G.S.
FILE COPY
TOPOGRAPHIC DIVISION
HISTORICAL

PINSON, ALA.
NW 1/4 LEEDS 15' QUADRANGLE
N3337.5—W8637.5/7.5
1959

SCOTT & BOWEN
JUL - 5 1953

4310