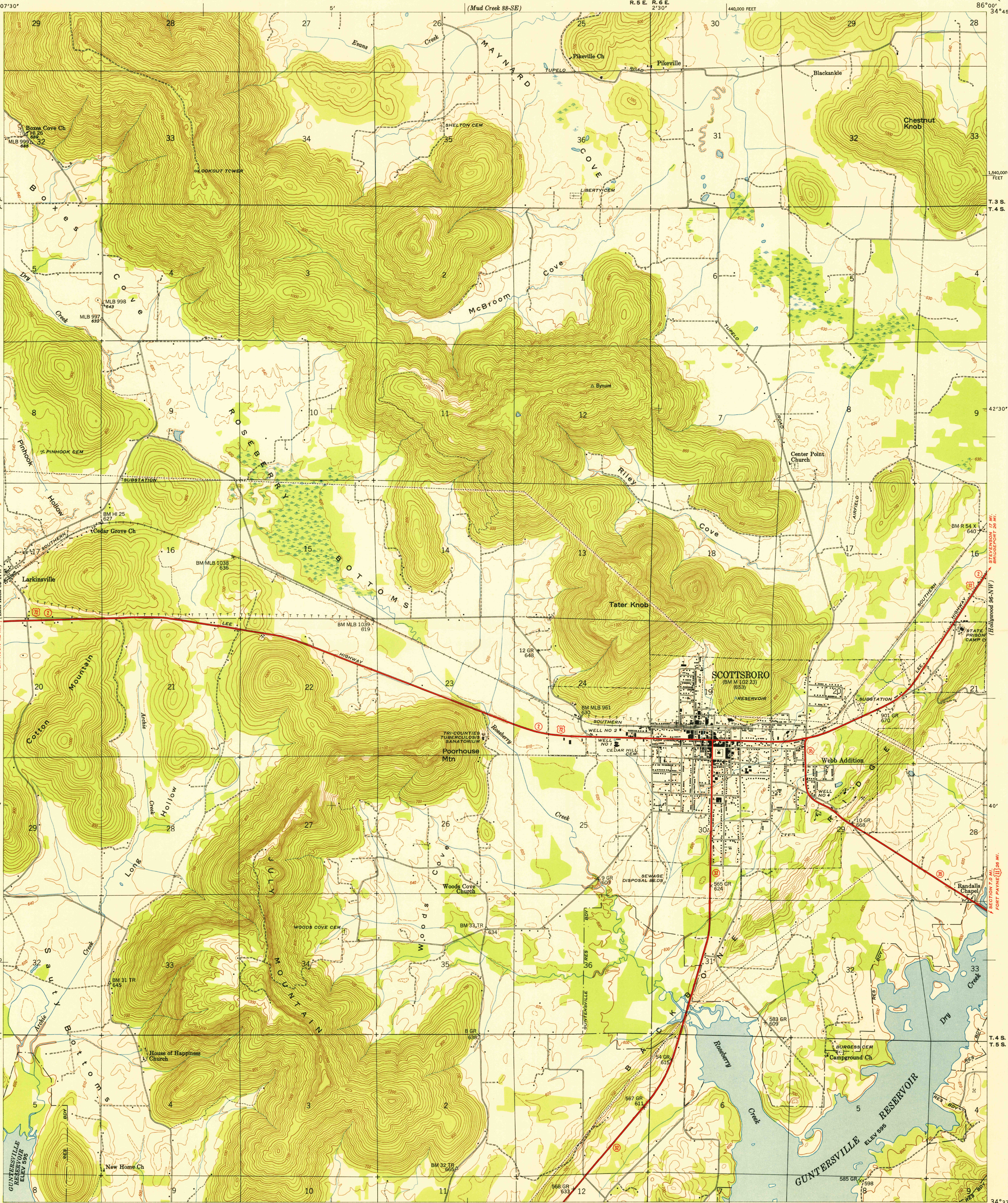


UNITED STATES
DEPARTMENT OF THE INTERIOR
GEOLOGICAL SURVEY

UNITED STATES
TENNESSEE VALLEY AUTHORITY
MAPS AND SURVEYS BRANCH

ALABAMA
(JACKSON COUNTY)
SCOTTSBORO QUADRANGLE
89-NE

U.S.G.S.
FILE COPY
Inspection and Editing.



Control by USC&GS, USGS, and TVA
Topography by USGS and TVA from aerial
photographs by stereophotogrammetric methods
Field examination by Tennessee Valley Authority, 1947
Maps distributed by the Geological Survey

THIS MAP COMPLIES WITH NATIONAL MAP ACCURACY STANDARDS

TRUE NORTH
MAGNETIC NORTH
APPROXIMATE MEAN
DECLINATION, 1950

SCALE 1:24000
1000 0 1000 2000 3000 4000 5000 6000 7000 FEET
1 5 0 1 KILOMETER
Contour interval 20 feet
Occasional 10 foot contours shown by broken lines
Datum is mean sea level

U.S.G.S.
FILE COPY
Inspection and Editing.

Polycyclic projection, 1927 North American datum
10,000 foot grid based on Alabama (East)
rectangular coordinate system
ROUTES USUALLY TRAVELED
HARD, IMPERVIOUS SURFACES,
OTHER SURFACE IMPROVEMENTS
U.S. ROUTE STATE ROUTE
SCOTTSBORO, ALA.
89-NE
USGS
Historical File
Topographic Division
Edition of 1950
N3437.5-W8600/7.5

AUG 1 1950 2145