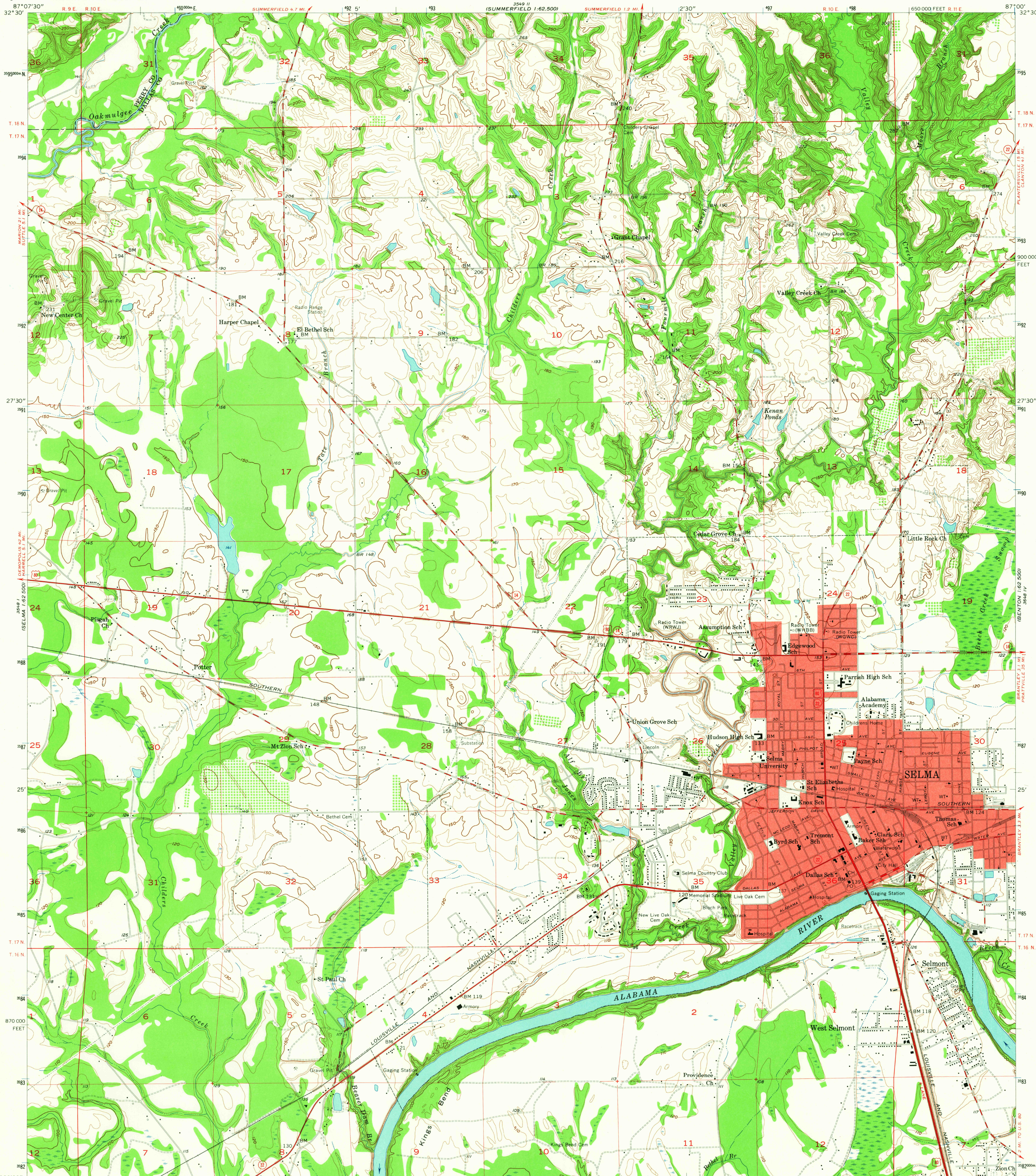
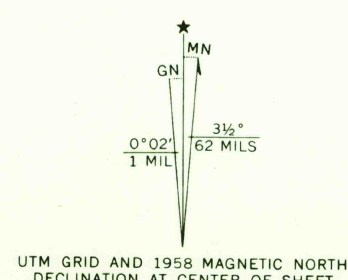


UNITED STATES
DEPARTMENT OF THE INTERIOR
GEOLOGICAL SURVEY

SELMA QUADRANGLE
ALABAMA
7.5 MINUTE SERIES (TOPOGRAPHIC)
NE/4 SELMA 15' QUADRANGLE



Mapped, edited, and published by the Geological Survey
Control by USGS, USC&GS, and USCE
Topography from aerial photographs by Kelsh plotter
Aerial photographs taken 1955. Field check 1958
Polyconic projection. 1927 North American datum
10,000-foot grid based on Alabama coordinate system, west zone
1000-meter Universal Transverse Mercator grid ticks,
zone 16, shown in blue
Red tint indicates area in which only
landmark buildings are shown



SCALE 1:24,000
CONTOUR INTERVAL 10 FEET
DATUM IS MEAN SEA LEVEL

THIS MAP COMPLIES WITH NATIONAL MAP ACCURACY STANDARDS
FOR SALE BY U. S. GEOLOGICAL SURVEY, WASHINGTON 25, D. C.
A FOLDER DESCRIBING TOPOGRAPHIC MAPS AND SYMBOLS IS AVAILABLE ON REQUEST

USGS
Historical File
Topographic Division

ROAD CLASSIFICATION
Heavy-duty ——— Light-duty ———
Medium-duty ——— Unimproved dirt ———
U. S. Route ——— State Route ———



U.S.G.S.
FILE COPY
TOPOGRAPHIC DIVISION
HISTORICAL

SELMA, ALA.
NE/4 SELMA 15' QUADRANGLE
N3222.5—W8700.7.5

1958

AMS 3548 1 NE—SERIES V844

DEC 1 6 1964