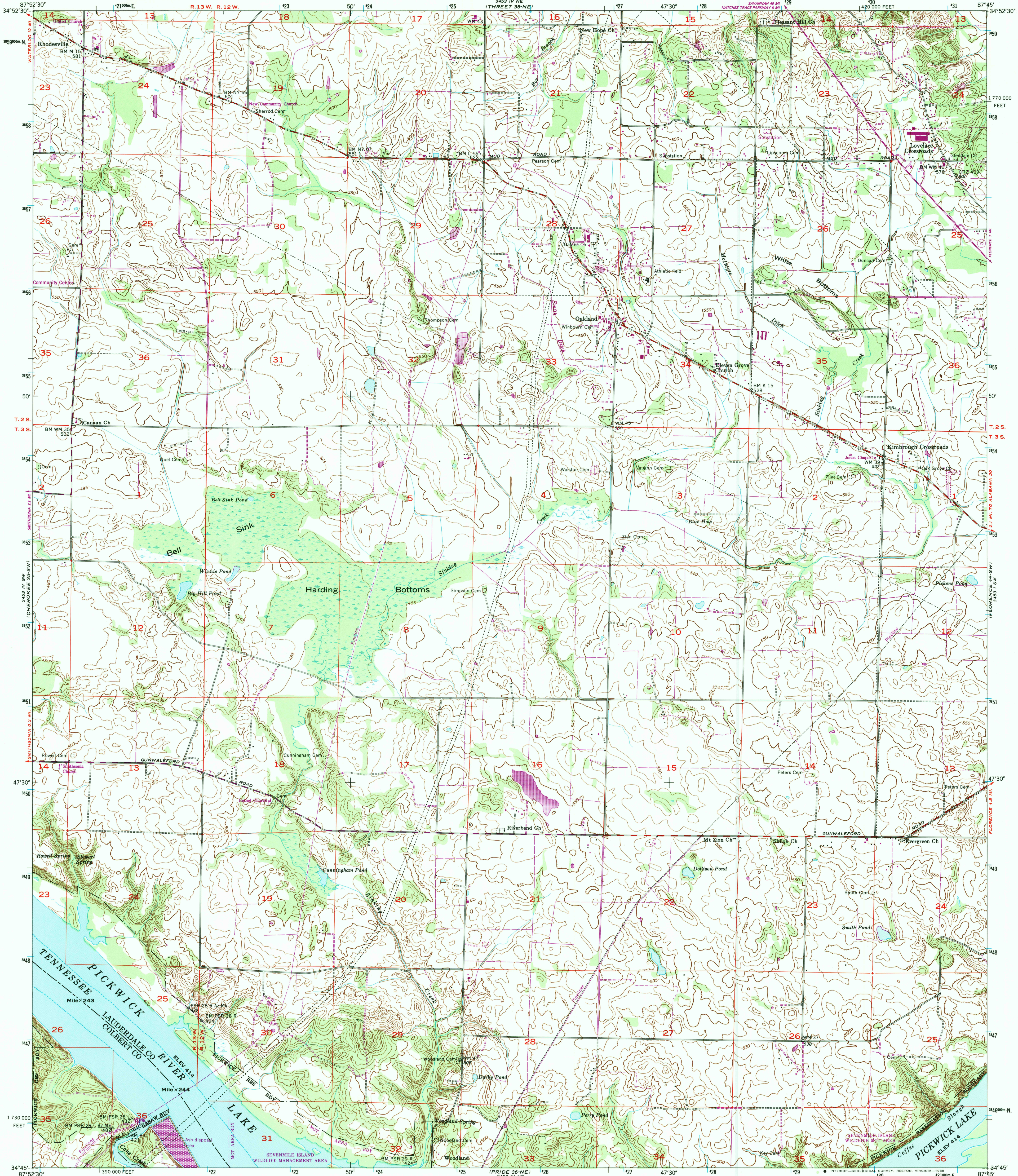


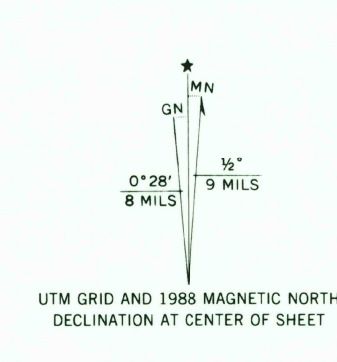
UNITED STATES
DEPARTMENT OF THE INTERIOR
GEOLOGICAL SURVEY

UNITED STATES
TENNESSEE VALLEY AUTHORITY
MAPS AND SURVEYS DEPARTMENT

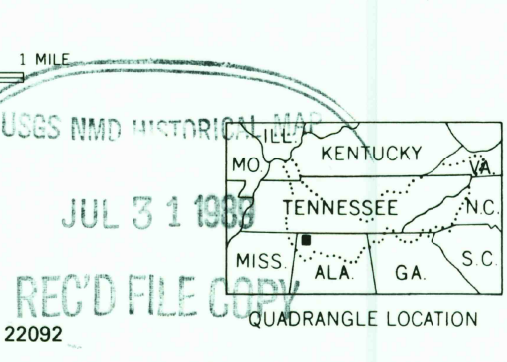
SINKING CREEK QUADRANGLE
ALABAMA
7.5 MINUTE SERIES (TOPOGRAPHIC) 35-SE



Mapped and edited by Tennessee Valley Authority
Published by the Geological Survey
Control by NOS/NOAA, USGS, and TVA
Topography by TVA by photogrammetric methods using aerial
photographs taken 1950. Map field checked by TVA, 1954
Polyconic projection, 10,000-foot grid ticks based on Alabama
coordinate system, west zone
1000-meter Universal Transverse Mercator grid ticks,
Zone 16, shown in blue. 1927 North American Datum
To place on the predicted North American Datum 1983
move the projection lines 8 meters south and
2 meters east as shown by dashed corner ticks



THIS MAP COMPLIES WITH NATIONAL MAP ACCURACY STANDARDS
FOR SALE BY U.S. GEOLOGICAL SURVEY, DENVER, COLORADO 80225, OR RESTON, VIRGINIA 22092
AND U.S. TENNESSEE VALLEY AUTHORITY, CHATTANOOGA, TENN. 37401
A FOLDER DESCRIBING TOPOGRAPHIC MAPS AND SYMBOLS IS AVAILABLE ON REQUEST



ROAD CLASSIFICATION (TVA 35-SE)
Primary highway, all weather, hard surface
Secondary highway, all weather, hard surface
Light-duty road, all weather, improved surface
Unimproved road, fair or dry weather
Interstate Route
U. S. Route
State Route

SINKING CREEK, ALA.
34087-G7-TF-024
1954
PHOTOREVISED 1988
DMA 3453 IV SE-SERIES V844

Revisions shown in purple and woodland compiled by
the Tennessee Valley Authority from aerial photographs
taken 1986 and other sources. This information not
field checked. Map edited 1988