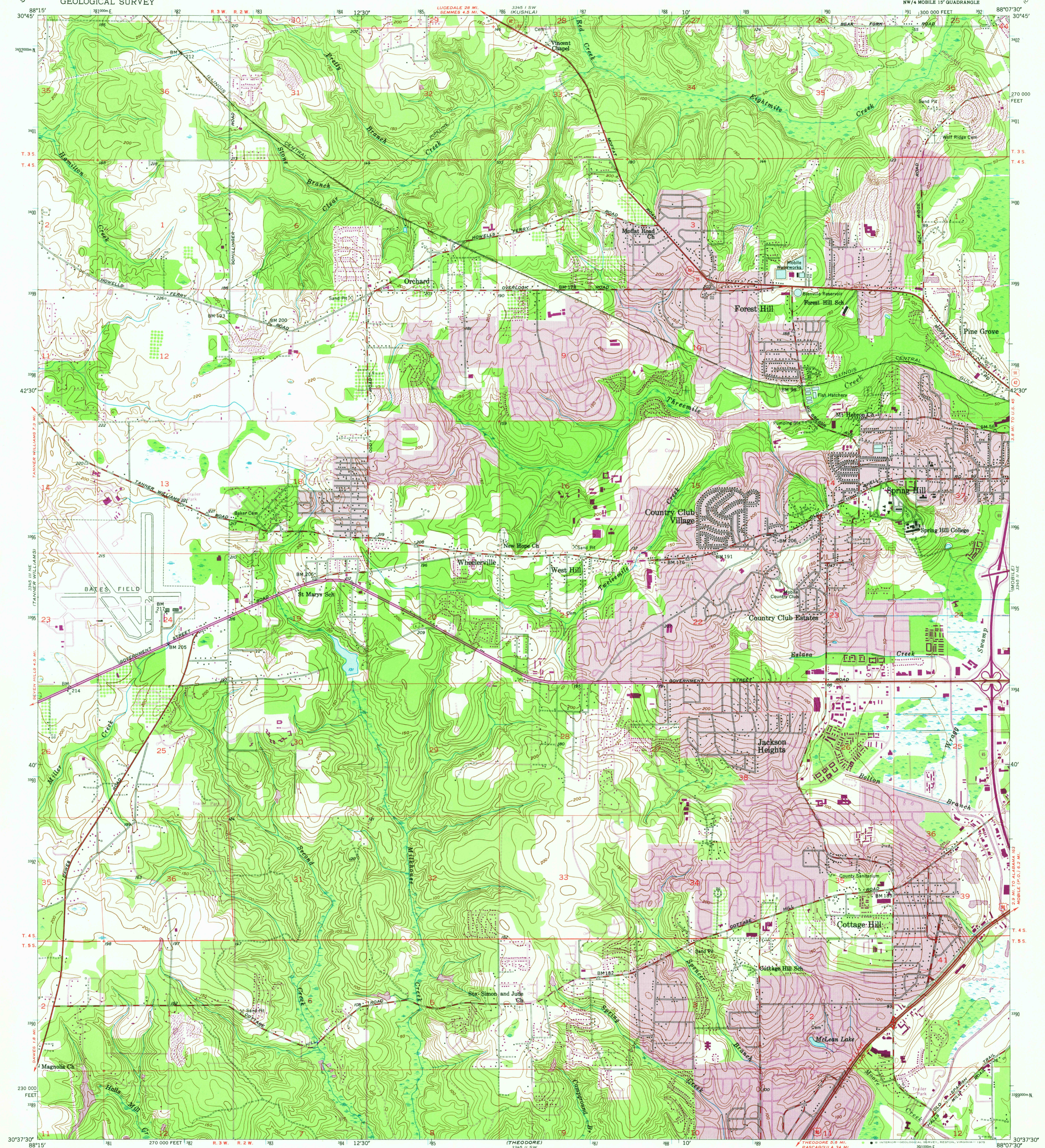
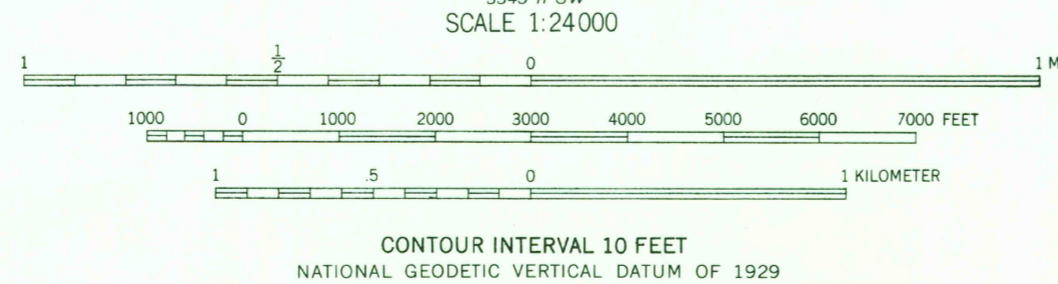
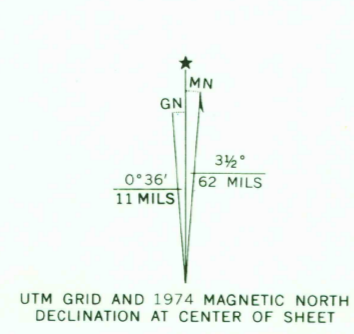


UNITED STATES
DEPARTMENT OF THE INTERIOR
GEOLOGICAL SURVEY

SPRING HILL QUADRANGLE
ALABAMA-MOBILE CO.
7.5 MINUTE SERIES (TOPOGRAPHIC)
NW 4 MOBILE 15' QUADRANGLE



Maped, edited, and published by the Geological Survey
Control by USGS, USC&GS, and Alabama Geodetic Survey
Culture and drainage in part compiled from aerial photographs
Topography by plane-table surveys 1939-1940. Revised 1953
Polyconic projection. 1927 North American datum
10,000-foot grid based on Alabama coordinate system,
west zone
1000-meter Universal Transverse Mercator grid ticks,
zone 16, shown in blue
Revisions shown in purple compiled from aerial
photographs taken 1967 and 1974. This information
not field checked



CONTOUR INTERVAL 10 FEET
NATIONAL GEODETIC VERTICAL DATUM OF 1929
THIS MAP COMPLIES WITH NATIONAL MAP ACCURACY STANDARDS
FOR SALE BY U.S. GEOLOGICAL SURVEY, RESTON, VIRGINIA 22092
A FOLDER DESCRIBING TOPOGRAPHIC MAPS AND SYMBOLS IS AVAILABLE ON REQUEST



- ROAD CLASSIFICATION
- Heavy-duty —————
 - Light-duty —————
 - Medium-duty —————
 - Unimproved dirt —————
 - Interstate Route ————
 - U.S. Route ————
 - State Route ————

USGS
Historical File
Topographic Division

SPRING HILL, ALA.
NW 4 MOBILE 15' QUADRANGLE
N3037.5-W8807.5/7.5
1953

PHOTOREVISED 1967 AND 1974
AMS 3345 II NW-SERIES V844

MAR 2 1 1975