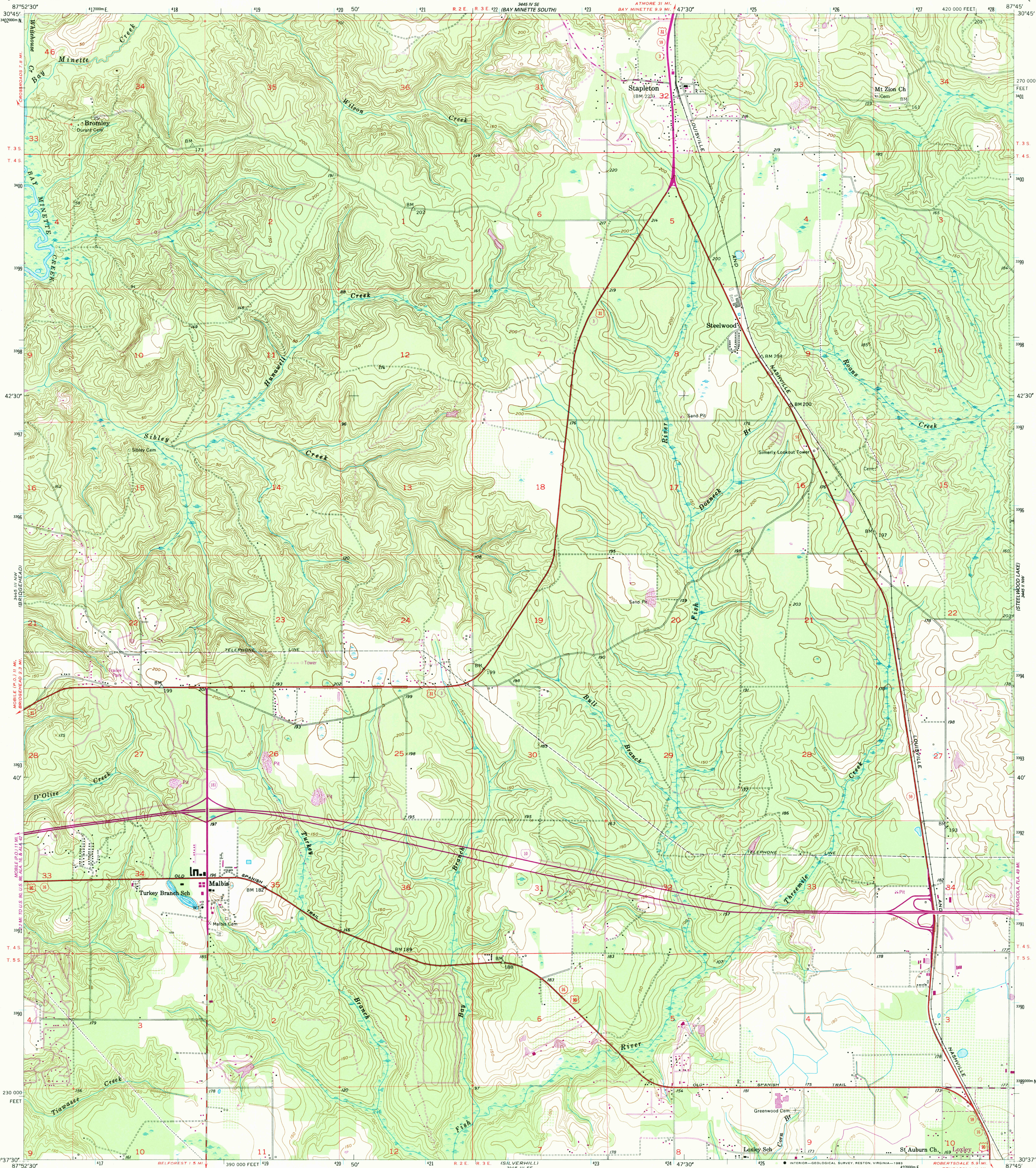


3445 III NE-
(HURRICANE)

UNITED STATES
DEPARTMENT OF THE INTERIOR
GEOLOGICAL SURVEY

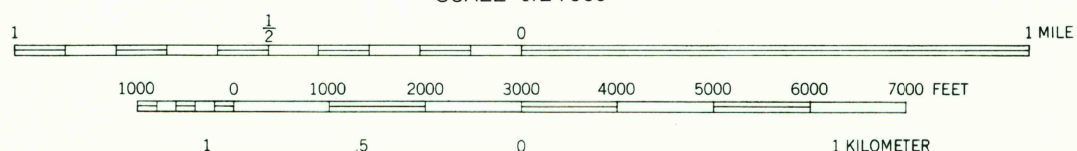
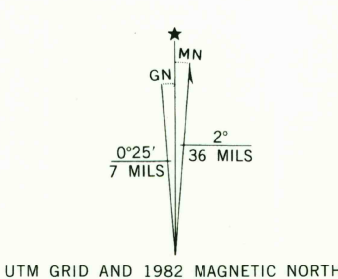
STAPLETON QUADRANGLE
ALABAMA-BALDWIN CO.
7.5 MINUTE SERIES (TOPOGRAPHIC)

3445 III NE-
(HURRICANE)



Mapped, edited, and published by the Geological Survey
Control by USGS, USC&GS, and Alabama Geodetic Survey
Culture and drainage in part compiled from aerial photographs
Topography by plane-table surveys 1940. Revised 1953
Polyconic projection, 1927 North American datum
10,000-foot grid based on Alabama coordinate system, west zone
1000-meter Universal Transverse Mercator grid ticks,
zone 16, shown in blue
To place on the predicted North American Datum 1983
move the projection lines 17 meters south as shown by
dashed corner ticks

Revisions shown in purple compiled from aerial photographs taken 1981
and other sources. This information not field checked. Map edited 1982



CONTOUR INTERVAL 10 FEET
NATIONAL GEODETIC VERTICAL DATUM OF 1929

THIS MAP COMPLIES WITH NATIONAL MAP ACCURACY STANDARDS
FOR SALE BY U. S. GEOLOGICAL SURVEY, RESTON, VIRGINIA 22092
A FOLDER DESCRIBING TOPOGRAPHIC MAPS AND SYMBOLS IS AVAILABLE ON REQUEST



ROAD CLASSIFICATION
Heavy-duty ——— Light-duty ———
Medium-duty ——— Unimproved dirt ———
○ Interstate Route ○ U. S. Route ○ State Route

STAPLETON, ALA.

N3037.5-W8745/7.5
1953

PHOTOREVISED 1982
DMA 3445 III NE-SERIES V844

FEB 23 1983

2192