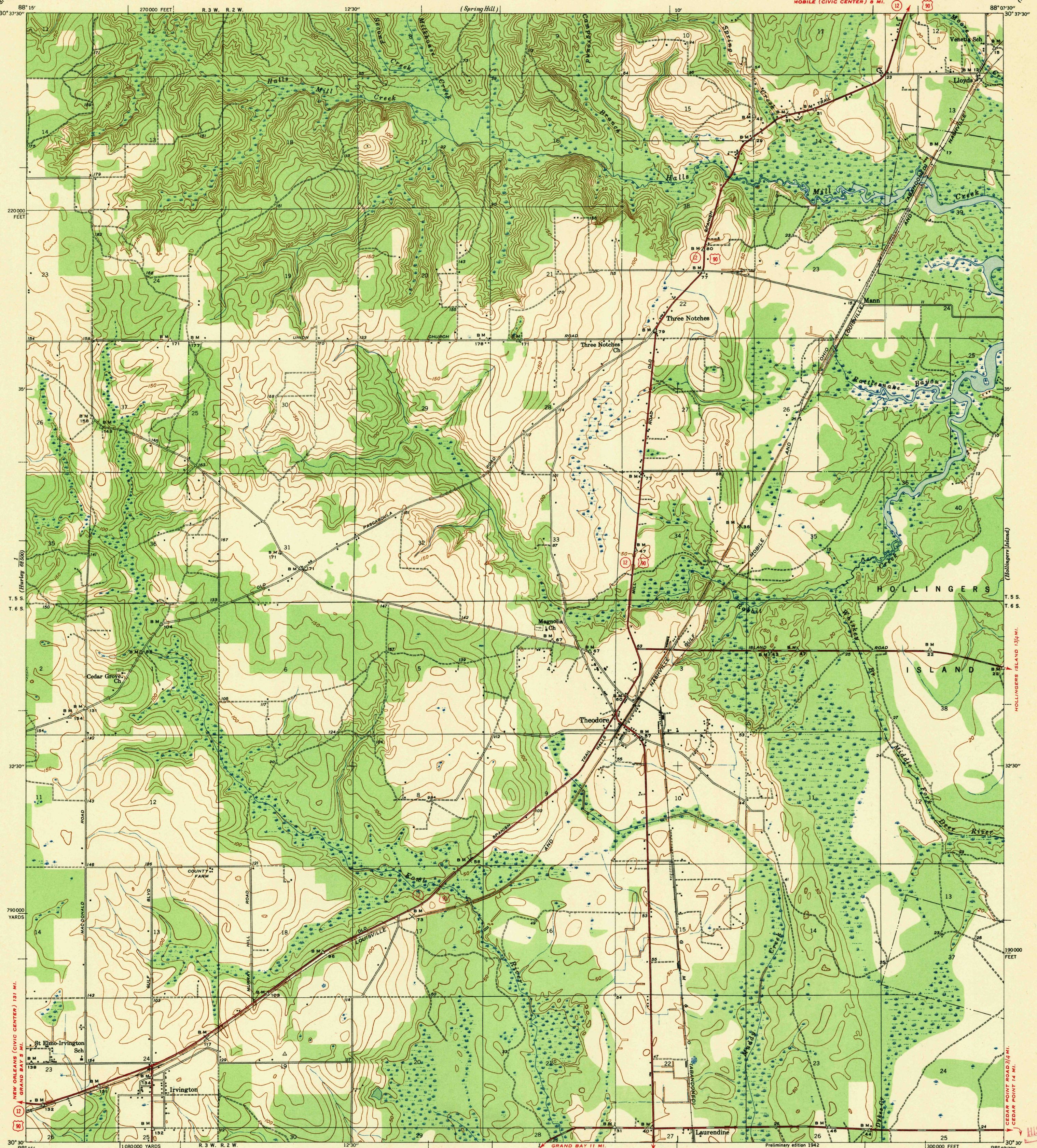


UNITED STATES
DEPARTMENT OF THE INTERIOR
GEOLOGICAL SURVEY

ALABAMA
(MOBILE COUNTY)
THEODORE QUADRANGLE
7½-MINUTE SERIES



Topography by E. R. Batten and Harold Williams
Surveyed in 1939

TRUE NORTH
MAGNETIC NORTH
APPROXIMATE MEAN
DECLINATION, 1939

Scale 31680
Contour interval 10 feet
Datum is mean sea level

ROUTES USUALLY TRAVELED
HARD IMPERVIOUS SURFACES
OTHER SURFACE IMPROVEMENTS
U. S. ROUTE 1942 STATE ROUTE

Polyconic projection, 1927 North American datum
5000 yard grid based on U. S. zone system, C
10000 foot grid based on Alabama (West)
rectangular coordinate system

THEODORE, ALA.
N 3030-W 8807.5/7.5

USGS
Historical File
Topographic Division

JUN 27 1942