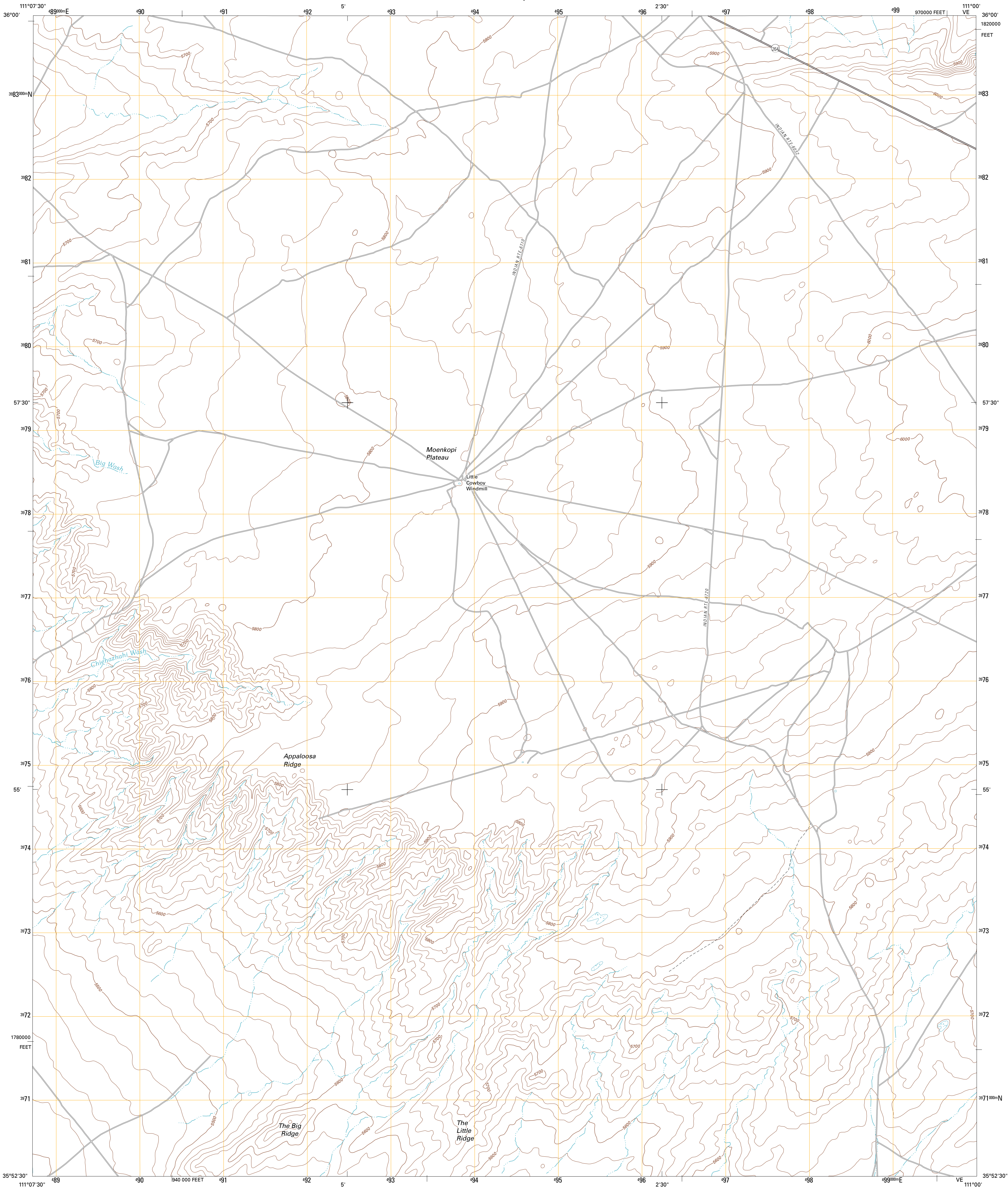




U.S. DEPARTMENT OF THE INTERIOR
U. S. GEOLOGICAL SURVEY

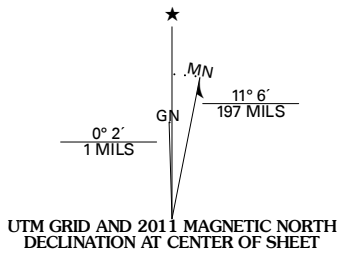


APPALOOSA RIDGE QUADRANGLE
ARIZONA-COCONINO CO.
7.5-MINUTE SERIES

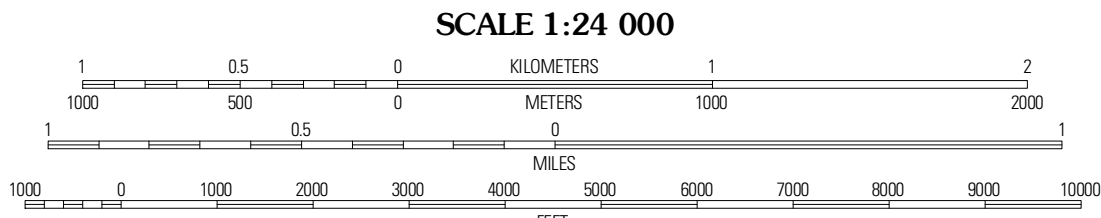


Produced by the United States Geological Survey
North American Datum of 1983 (NAD83)
World Geodetic System of 1984 (WGS84). Projection and
1 000-meter grid: Universal Transverse Mercator, Zone 12S
10 000-foot ticks: Arizona Coordinate System of 1983
(central zone)

Imagery.....NAIP, June 2010
Roads.....©2006-2011 TomTom
Names.....GNIS, 2011
Hydrography.....National Hydrography Dataset, 2007
Contours.....National Elevation Dataset, 1999
Boundaries.....Census, IBWC, IBC, USGS, 1972 - 2010



U.S. National Grid 100,000m Square ID
VE
Grid Zone Designation 12S



CONTOUR INTERVAL 20 FEET
NORTH AMERICAN VERTICAL DATUM OF 1988
This map was produced to conform with the
National Geospatial Program US Topo Product Standard, 2011.
A metadata file associated with this product is draft version 0.6.1



Moenkopi	Tuba City SE	Bat Canyon
Goldtooth	Appaloosa Ridge	Coal Mine Mesa
The Landmark	Gold Spring	Dinebito Spring

ROAD CLASSIFICATION			
Interstate Route	State Route	Local Road	4WD
US Route			
Ramp			
Interstate Route	US Route	State Route	

APPALOOSA RIDGE, AZ
2011