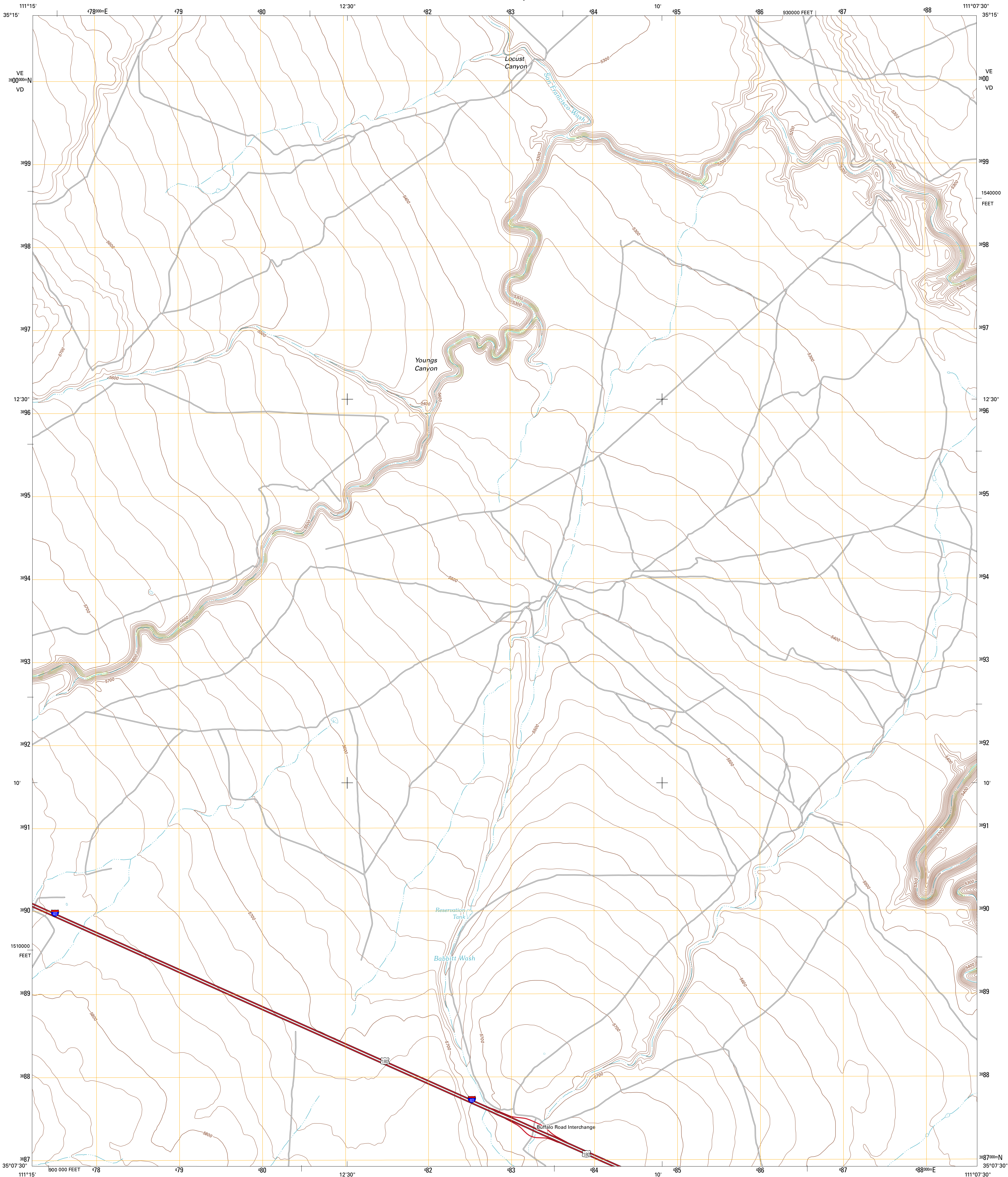




U.S. DEPARTMENT OF THE INTERIOR
U. S. GEOLOGICAL SURVEY



BABBITT WASH QUADRANGLE
ARIZONA-COCONINO CO.
7.5-MINUTE SERIES



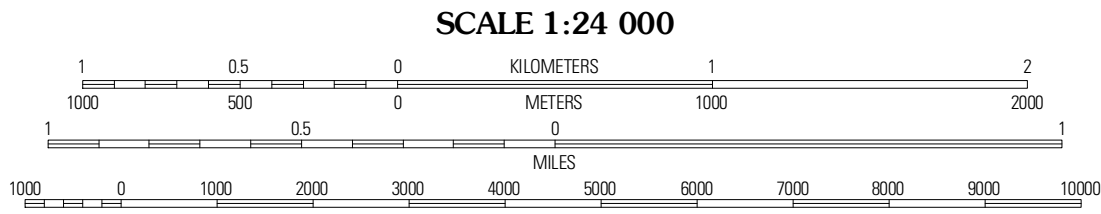
Produced by the United States Geological Survey
North American Datum of 1983 (NAD83)
World Geodetic System of 1984 (WGS84). Projection and
1 000-meter grid: Universal Transverse Mercator, Zone 12S
10 000-foot ticks: Arizona Coordinate System of 1983
(central zone)

Imagery.....NAIP, June 2010
Roads.....©2006-2011 TomTom
Names.....GNIS, 2011
Hydrography.....National Hydrography Dataset, 2007
Contours.....National Elevation Dataset, 1999
Boundaries.....Census, IBWC, IBC, USGS, 1972 - 2010

UTM GRID AND 2011 MAGNETIC NORTH
DECLINATION AT CENTER OF SHEET

MN
GN
0° 6' 11" N
11° 1' 1" E
186 MILS

U.S. National Grid
100,000-m Square ID
VE 3900
VD 12S
Grid Zone Designation
12S



CONTOUR INTERVAL 20 FEET
NORTH AMERICAN VERTICAL DATUM OF 1988

This map was produced to conform with the
National Geospatial Program US Topo Product Standard, 2011.
A metadata file associated with this product is draft version 0.6.1



QUADRANGLE LOCATION

Merriam Crater	Grand Falls SW	Grand Falls SE
Angell	Babbitt Wash	Canyon Diablo
Elliott Canyon	Anderson Canyon	Meteor Crater

ROAD CLASSIFICATION

Interstate Route
US Route
Ramp

State Route
Local Road
4WD

Interstate Route
US Route
State Route

BABBITT WASH, AZ
2011