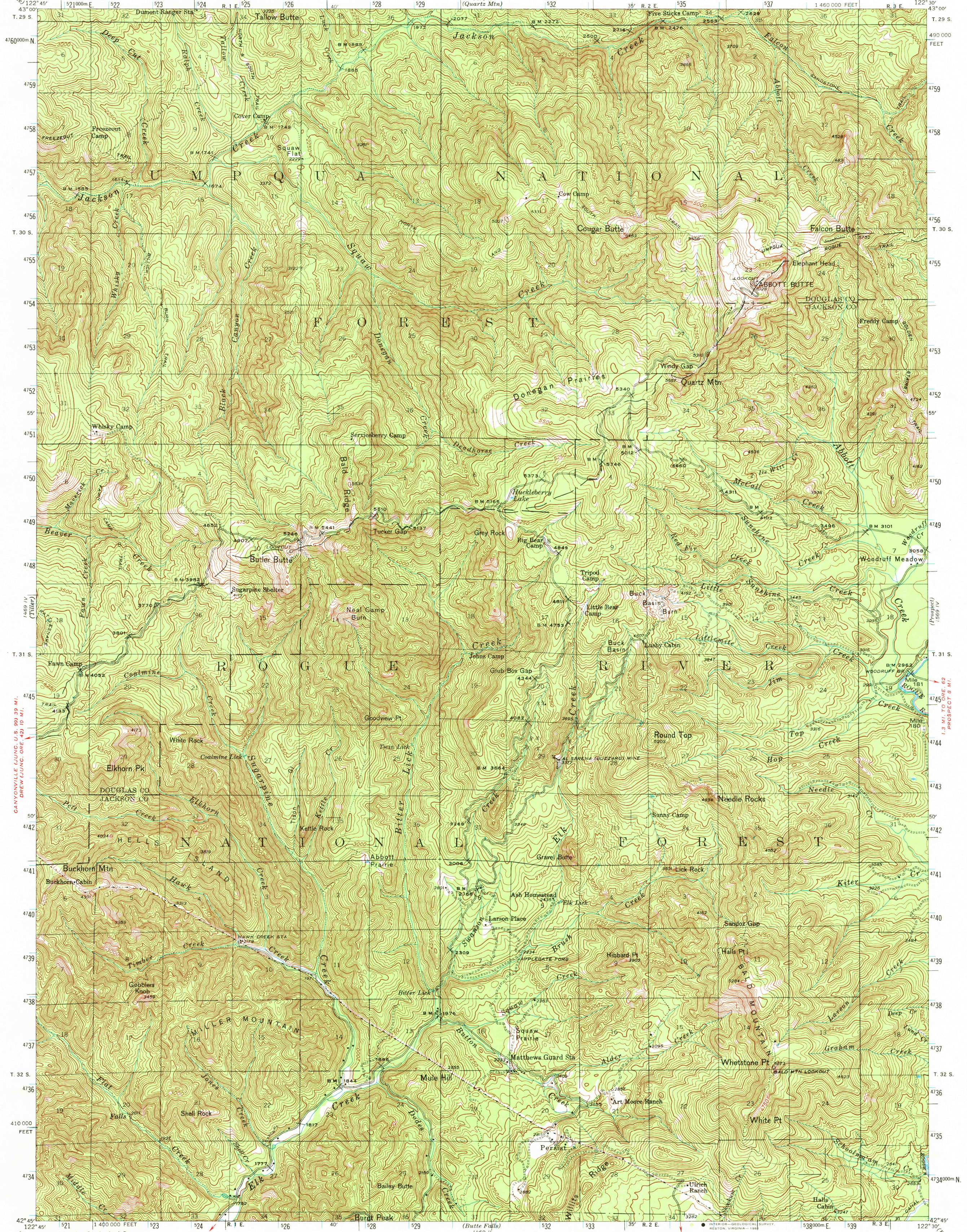


UNITED STATES  
DEPARTMENT OF THE INTERIOR  
GEOLOGICAL SURVEY

OREGON  
ABBOTT BUTTE QUADRANGLE  
15-MINUTE SERIES  
1:460,000 FEET

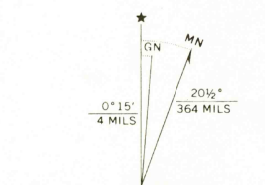


Map by the Geological Survey

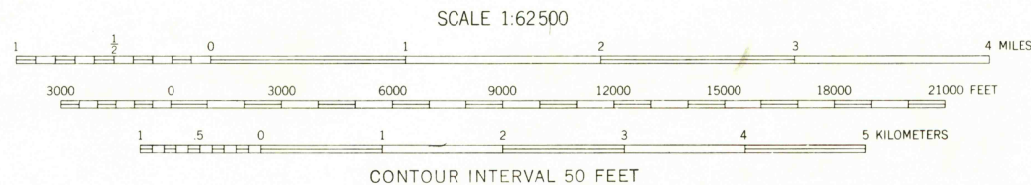
Polyconic projection. 1927 North American datum  
10,000-foot grid based on Oregon (south)  
rectangular coordinate system  
1000-meter Universal Transverse Mercator grid ticks,  
zone 10, shown in blue

To place on the predicted North American Datum 1983  
move the projection lines 20 meters north and  
94 meters east

There may be private inholdings within the boundaries of  
the National or State reservations shown on this map



UTM GRID AND 1984 MAGNETIC NORTH  
DECLINATION AT CENTER OF SHEET



FOR SALE BY U.S. GEOLOGICAL SURVEY, DENVER, COLORADO 80225, OR RESTON, VIRGINIA 22092  
A FOLDER DESCRIBING TOPOGRAPHIC MAPS AND SYMBOLS IS AVAILABLE ON REQUEST



ROAD CLASSIFICATION  
Light-duty ————— Unimproved dirt —————

ABBOTT BUTTE, OREG.

N 4245—W 12230/15

1944

DMA 1469 I—SERIES V792

USGS  
HISTORICAL FILE  
NATIONAL MAPPING DIVISION

JUL 7 1981  
1300