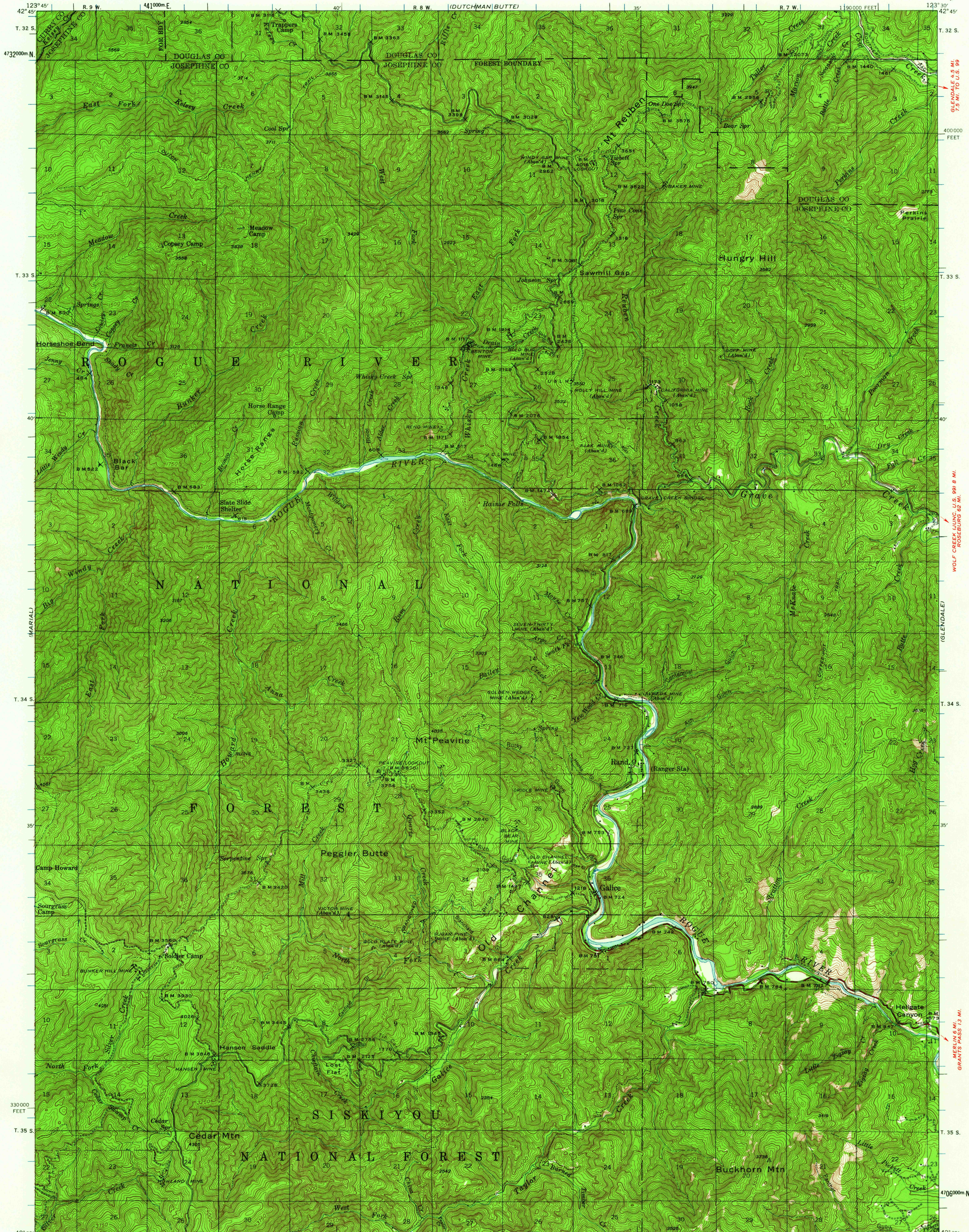


UNITED STATES
DEPARTMENT OF THE INTERIOR
GEOLOGICAL SURVEY

OREGON
GALICE QUADRANGLE
15-MINUTE SERIES



Maped by the Geological Survey
1946

ROAD CLASSIFICATION
Medium-duty ——— Light-duty ———
Unimproved dirt ———

TRUE NORTH
MAGNETIC NORTH
APPROXIMATE MEAN
DECLINATION, 1946

SCALE 1:62500
0 1 2 3 4 MILES
0 3000 6000 9000 12000 15000 18000 21000 FEET
0 1 2 3 4 5 KILOMETERS
CONTOUR INTERVAL 50 FEET
DATUM IS MEAN SEA LEVEL

USGS
Historical File
Topographic Division

Polyconic projection, 1927 North American datum
10,000-foot grid based on Oregon (South)
rectangular coordinate system
1000-meter Universal Transverse Mercator grid ticks,
zone 10, shown in blue

GALICE, OREG.
N4230—W12330/15
1946

FOR SALE BY U.S. GEOLOGICAL SURVEY, DENVER 25, COLORADO OR WASHINGTON 25, D. C.
A FOLDER DESCRIBING TOPOGRAPHIC MAPS AND SYMBOLS IS AVAILABLE ON REQUEST

HISTORICAL
APR - 4 1967

6190