

UNITED STATES
DEPARTMENT OF THE INTERIOR
GEOLOGICAL SURVEY

OREGON
GALICE QUADRANGLE
15-MINUTE SERIES

(Riddle 1:125,000)

U.S.G.S.
FILE COPY
TOPOGRAPHIC DIVISION

WOLF CREEK (JUNC. U.S. 99) 9 MI.
ROSEBURG 62 MI.

USDA 6 MI.
GRANITE FALLS 15 MI.

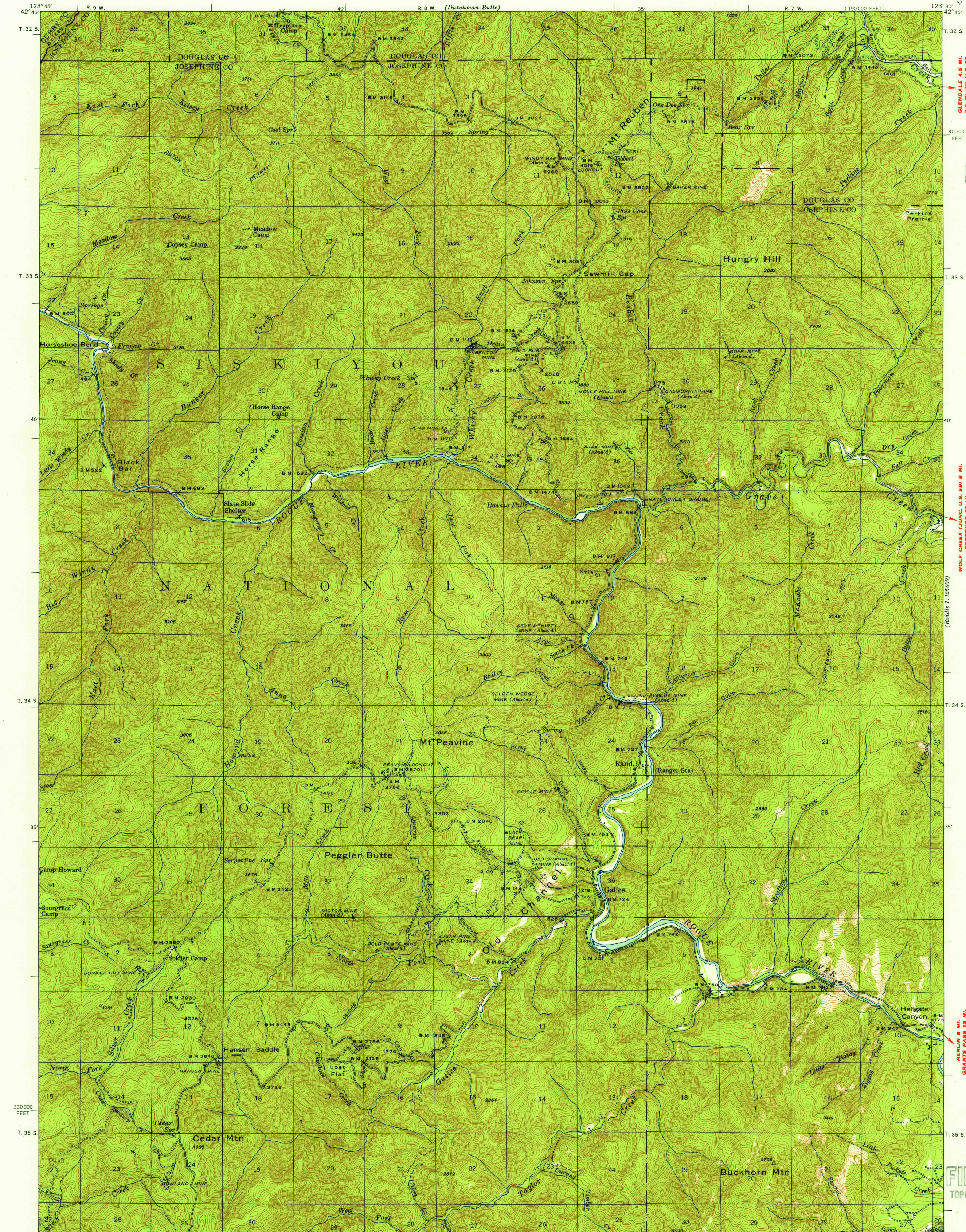
U.S.G.S.
FILE COPY
TOPOGRAPHIC DIVISION

GALICE, OREG.

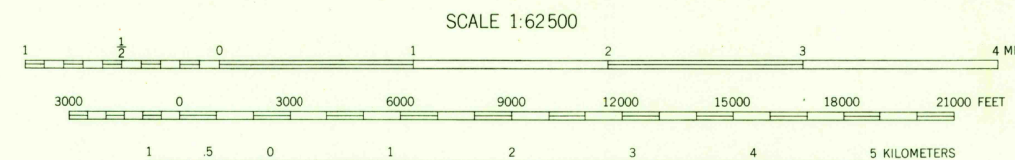
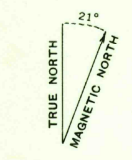
HISTORICAL

JUN 21 1955

5270



Mapped by the Geological Survey
1946



ROAD CLASSIFICATION
Heavy-duty ——— 4 LANE 6 LANE Light-duty ———
Medium-duty ——— 4 LANE 6 LANE Unimproved dirt ———
U.S. Route State Route

APPROXIMATE MEAN
DECLINATION, 1946

Contour interval 50 feet
Datum is mean sea level

FOR SALE BY U.S. GEOLOGICAL SURVEY, FEDERAL CENTER, DENVER, COLORADO OR WASHINGTON 25, D. C.
A FOLDER DESCRIBING TOPOGRAPHIC MAPS AND SYMBOLS IS AVAILABLE ON REQUEST

U.S.G.S.
Historical File
Topographic Division

N4230-W12330/15

1946