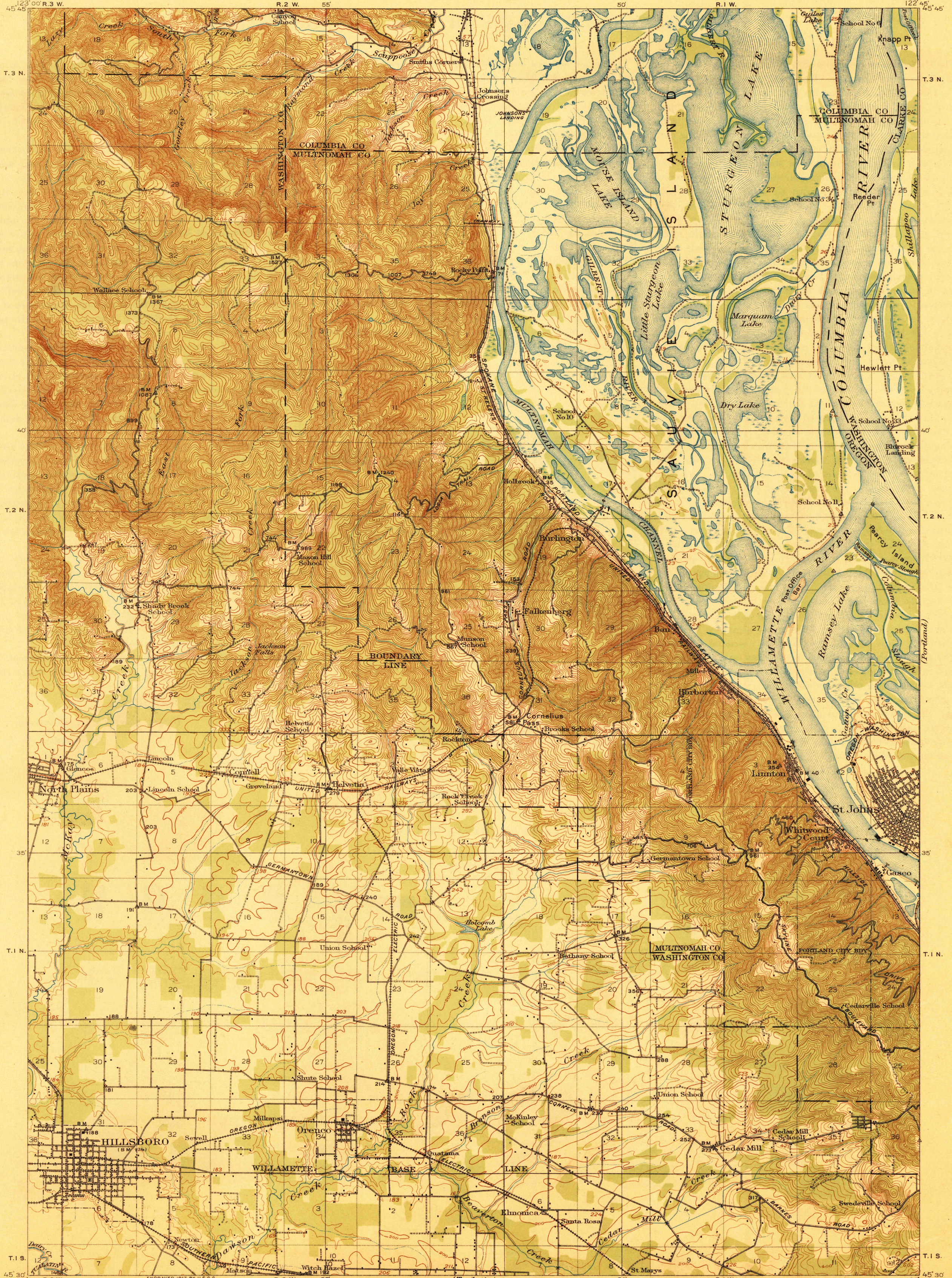


DEPARTMENT OF THE INTERIOR
FRANKLIN K. LANE, SECRETARY
U.S. GEOLOGICAL SURVEY
GEORGE OTIS SMITH, DIRECTOR

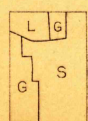
TOPOGRAPHY

STATE OF OREGON
JOHN H. LEWIS
STATE ENGINEER

OREGON-WASHINGTON
HILLSBORO QUADRANGLE



ENGRAVED 1917 BY U.S.G.S.
R.B. Marshall, Chief Geographer.
T.G. Gerdine, Geographer in charge.
Topography by C.L. Sadler, Fred Graff, Jr.,
and S.G. Lunde.
Control by Corps of Engineers U.S. Army,
U.S. Coast and Geodetic Survey, L.F. Biggs,
and E.M. Bandli.
Surveyed in 1915.



Scale 62500
1 2 3 4 5 Miles
1 2 3 4 5 Kilometers

Contour interval 25 feet.
Datum is mean sea level.

USGS
Historical File
Topographic Division

APPROXIMATE MEAN
DECLINATION 1915

Edition of 1918.

FEB 16 1918 2000

HILLSBORO, OREG-WASH.

U.S.G.S.
FILE COPY
Ed. Liv. 1909, 1915, 1918, 1920, 1921, 1922, 1923, 1924, 1925, 1926, 1927, 1928, 1929, 1930, 1931, 1932, 1933, 1934, 1935, 1936, 1937, 1938, 1939, 1940, 1941, 1942, 1943, 1944, 1945, 1946, 1947, 1948, 1949, 1950, 1951, 1952, 1953, 1954, 1955, 1956, 1957, 1958, 1959, 1960, 1961, 1962, 1963, 1964, 1965, 1966, 1967, 1968, 1969, 1970, 1971, 1972, 1973, 1974, 1975, 1976, 1977, 1978, 1979, 1980, 1981, 1982, 1983, 1984, 1985, 1986, 1987, 1988, 1989, 1990, 1991, 1992, 1993, 1994, 1995, 1996, 1997, 1998, 1999, 2000

HISTORICAL