

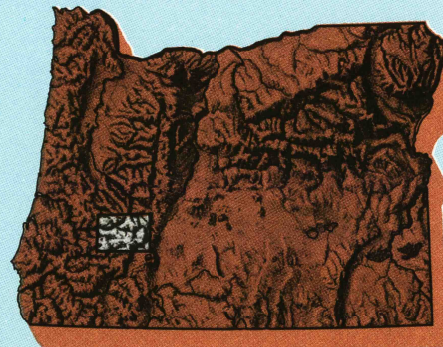
DIAMOND LAKE, OREGON

30 X 60 MINUTE SERIES (TOPOGRAPHIC)

43122-A1-TM-100

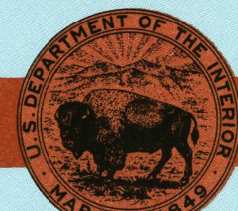
Diamond Lake  
OREGON

1:100 000-scale metric  
topographic map



30 X 60 MINUTE QUADRANGLE  
SHOWING

- Contours and elevations in meters
- Highways, roads and other manmade structures
- Water features
- Woodland areas
- Geographic names



GEOLOGICAL SURVEY

1978

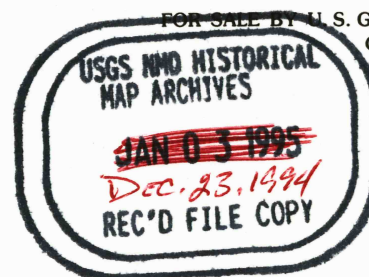
Produced by the United States Geological Survey  
Compiled from USGS 1:24 000 and 1:62 500-scale topographic maps dated 1955-1956. Planimetry revised from aerial photographs taken 1975 and other source data. Revised information not field checked. Map edited 1978  
North American Datum of 1927 (NAD 27). Projection and 10 000-meter grid: Universal Transverse Mercator, zone 10 25 000-foot ticks: Oregon coordinate system, south zone  
The values of the shift between NAD 27 and North American Datum of 1983 (NAD 83) for 7.5-minute intersections are obtainable from National Geodetic Survey NADCON software  
There may be private inholdings within the boundaries of the National or State reservations shown on this map  
Protected land lines are dashed

CONTOUR INTERVAL 50 METERS  
NATIONAL GEODETIC VERTICAL DATUM OF 1929  
ELEVATIONS SHOWN TO THE NEAREST METER

THIS MAP COMPLIES WITH NATIONAL MAP ACCURACY STANDARDS

CONVERSION TABLE		DECLINATION DIAGRAM	ADJOINING MAPS		
Meters	Feet		1	2	3
1	3.2808		1	2	3
2	6.5617		4	5	
3	9.8425				
4	13.1234				
5	16.4042				
6	19.6850				
7	22.9659				
8	26.2467				
9	29.5276				
10	32.8084				
To convert meters to feet multiply by 3.2808		UTM grid convergence (GN) and 1978 magnetic declination (MD) at center of map Diagram is approximate			
To convert feet to meters multiply by 0.3048					

FOR INFO: U.S. GEOLOGICAL SURVEY, DENVER, COLORADO 80225  
OR RESTON, VIRGINIA 22092



Topographic Map Symbols

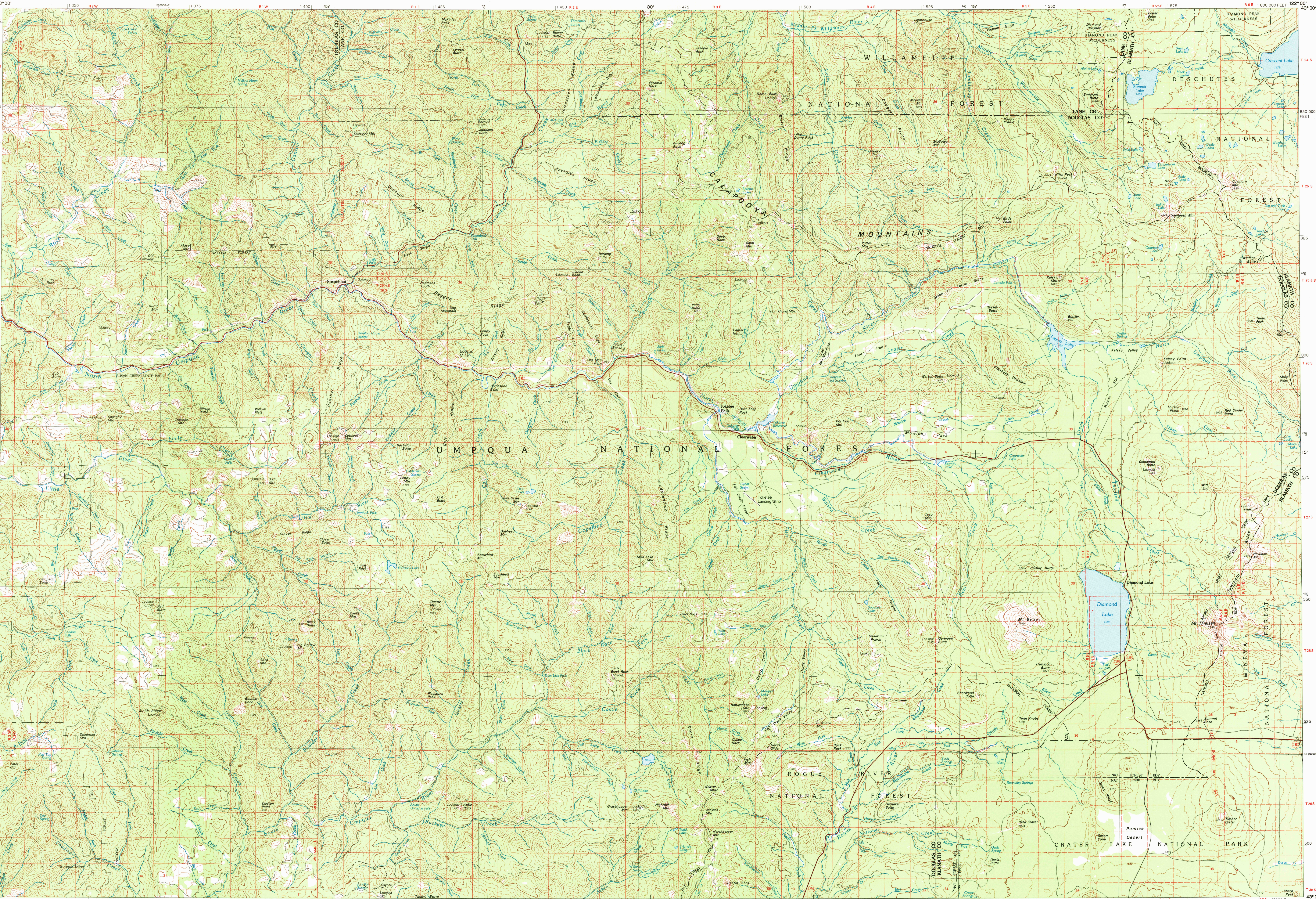
Primary highway, hard surface	Secondary highway, hard surface	Light duty road, principal street, hard or improved surface	Other road or street; trail	Route marker: Interstate; U. S. State	Railroad: standard gage; narrow gage	Bridge: overpass; underpass	Tunnel: road, railroad	Built up area; locality; elevation	Airport: landing field; landing strip	National boundary	State boundary	County boundary	National or State reservation boundary	Land grant boundary	U. S. public lands survey: range, township; section	Range, township; section line: protected	Power transmission line: pipeline	Dam; dam with lock	Cemetery; building	Wetland: water with spring	Mine shaft; adit or cave; mine, quarry; gravel pit	Campground; picnic area; U. S. location monument	Ruins; cliff dwelling	Distorted surface: strip mine, lava; sand	Contours: index; intermediate; supplementary	Bathymetric contours: index; intermediate	Stream, lake: perennial; intermittent	Rapids, large and small; falls, large and small	Area to be submerged; marsh, swamp	Land subject to controlled inundation; woodland	Scrub; mangrove	Orchard; vineyard
-------------------------------	---------------------------------	---	-----------------------------	---------------------------------------	--------------------------------------	-----------------------------	------------------------	------------------------------------	---------------------------------------	-------------------	----------------	-----------------	--	---------------------	---	--	-----------------------------------	--------------------	--------------------	----------------------------	--	--	-----------------------	---	--	---	---------------------------------------	---	------------------------------------	---	-----------------	-------------------

A pamphlet describing topographic maps is available on request

DIAMOND LAKE, OREGON

43122-A1-TM-100

1978



INTRINSIC GEOLOGICAL SURVEY, RESTON, VIRGINIA-1994

SCALE 1:100 000

1 CENTIMETER ON THE MAP REPRESENTS 1 KILOMETER ON THE GROUND

CONTOUR INTERVAL 50 METERS

DIAMOND LAKE, OREGON

43122-A1-TM-100

1978