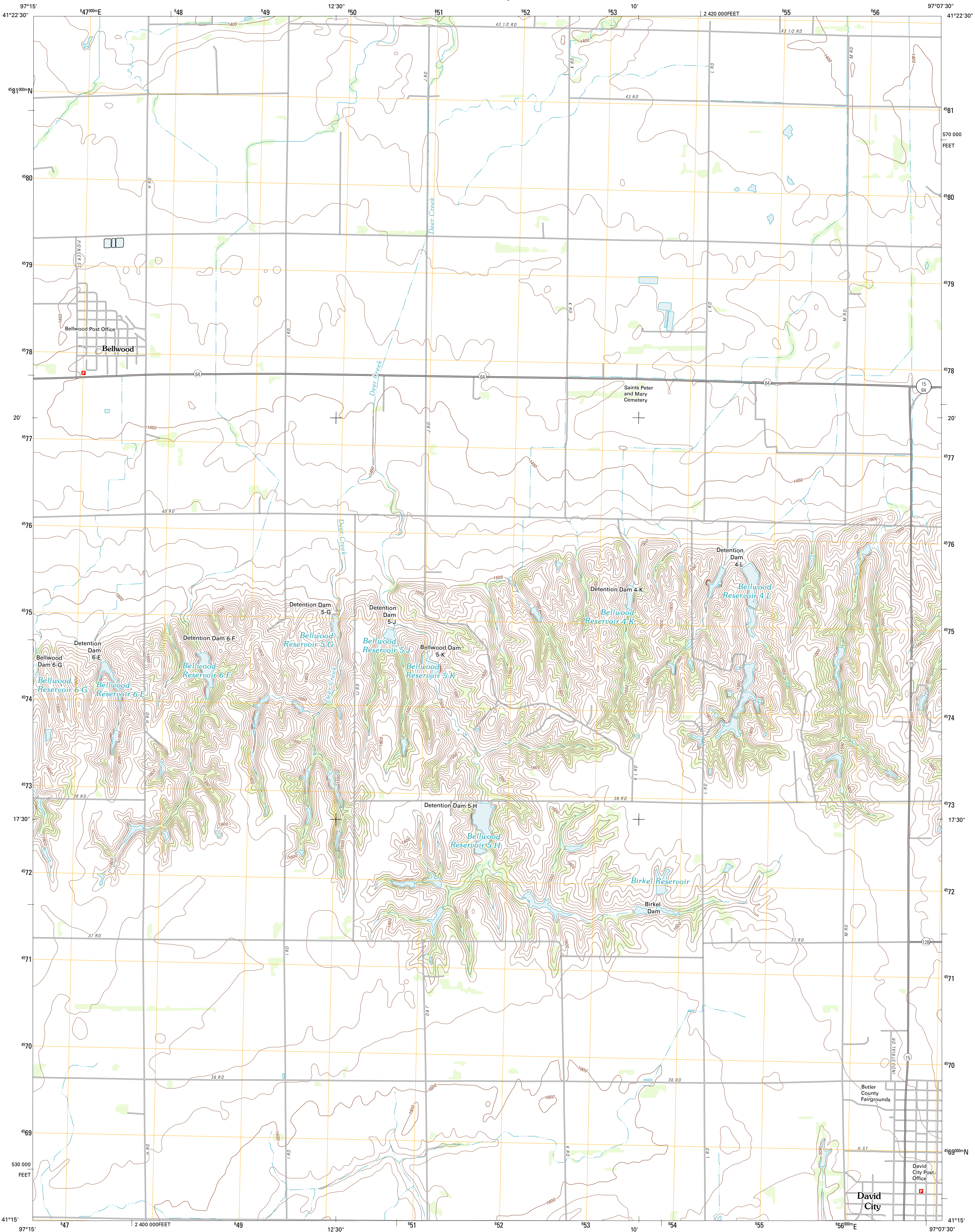




U.S. DEPARTMENT OF THE INTERIOR
U. S. GEOLOGICAL SURVEY

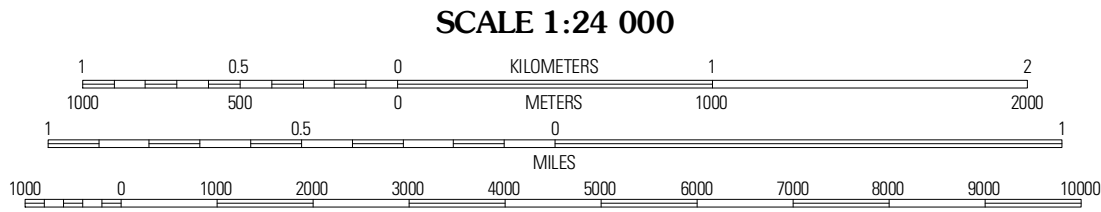
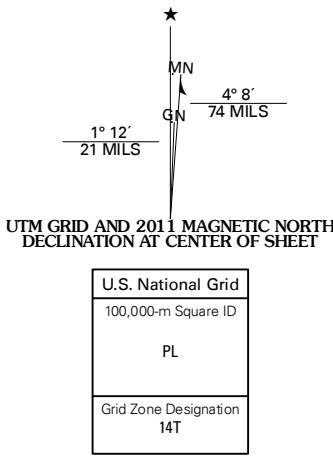


DAVID CITY WEST QUADRANGLE
NEBRASKA-BUTLER CO.
7.5-MINUTE SERIES

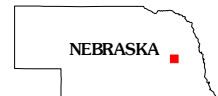


Produced by the United States Geological Survey
North American Datum of 1983 (NAD83)
World Geodetic System of 1984 (WGS84). Projection and
1000-meter grid: Universal Transverse Mercator, Zone 14T
10 000-foot ticks: Nebraska Coordinate System of 1983

Imagery.....NAIP, July 2010
Roads.....©2006-2011 TomTom
Names.....GNSS, 2011
Hydrography.....National Hydrography Dataset, 2009
Contours.....National Elevation Dataset, 2002
Boundaries.....Census, IBWC, IBG, USGS, 1972 - 2010



CONTOUR INTERVAL 10 FEET
NORTH AMERICAN VERTICAL DATUM OF 1988
This map was produced to conform with the
National Geospatial Program US Topo Product Standard, 2011.
A metadata file associated with this product is draft version 0.6.1



Columbus	Richland	Schuyler
Columbus SE	David City West	David City East
Rising City	Corrison	Brainard

ADJOINING 7.5 QUADRANGLES

ROAD CLASSIFICATION
Interstate Route
US Route
Ramp
State Route
Local Road
4WD
Interstate Route
US Route
State Route

DAVID CITY WEST, NE
2011