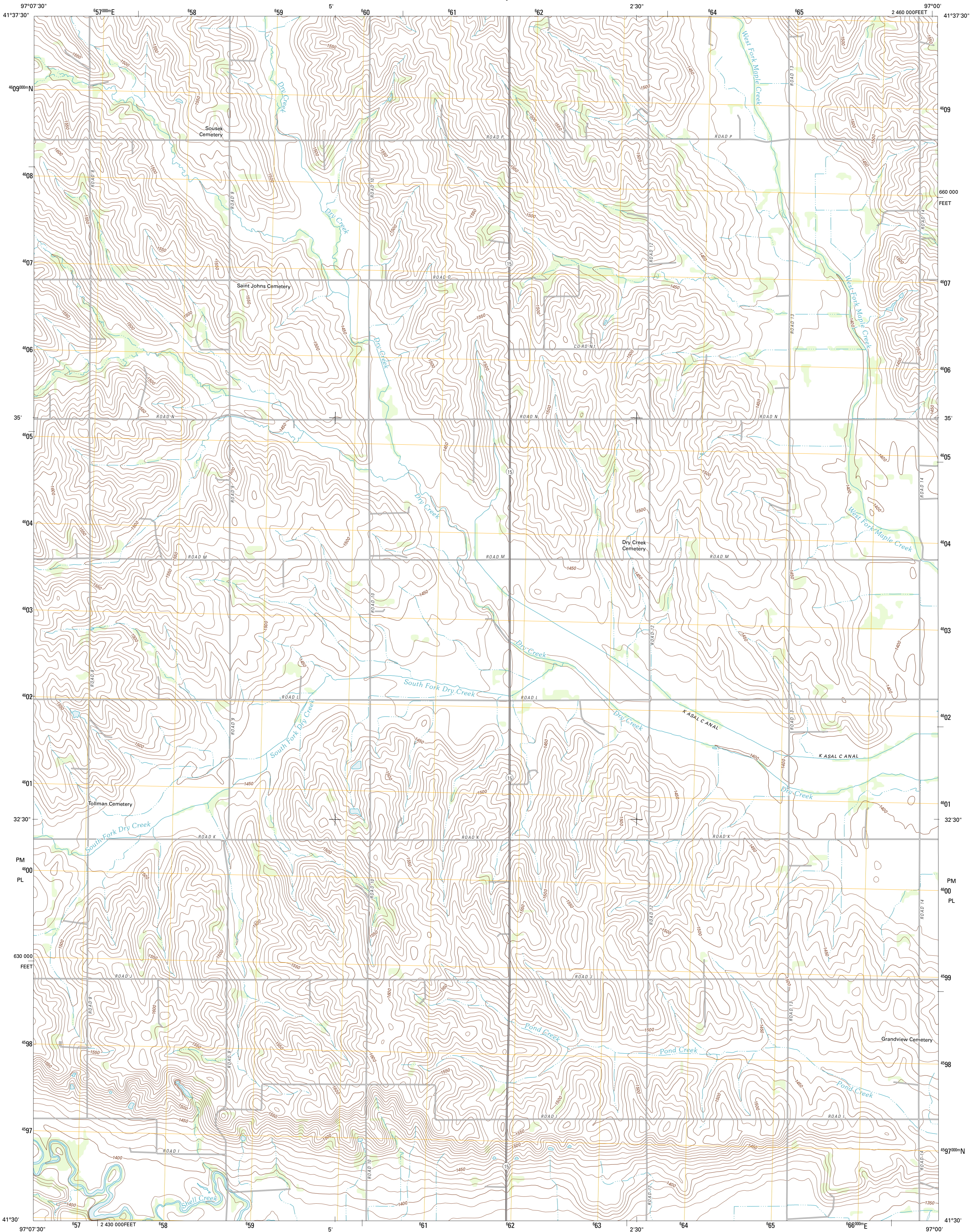




U.S. DEPARTMENT OF THE INTERIOR  
U. S. GEOLOGICAL SURVEY

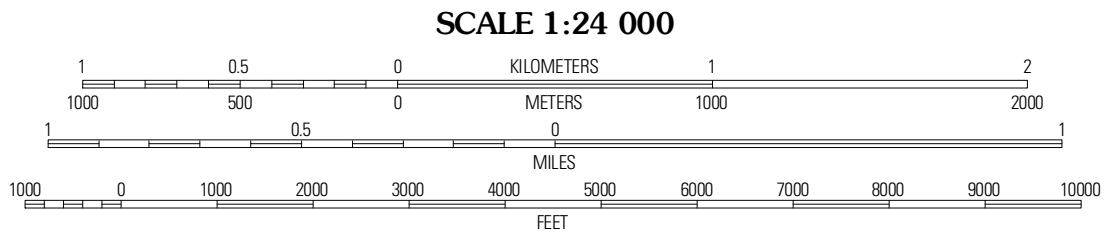
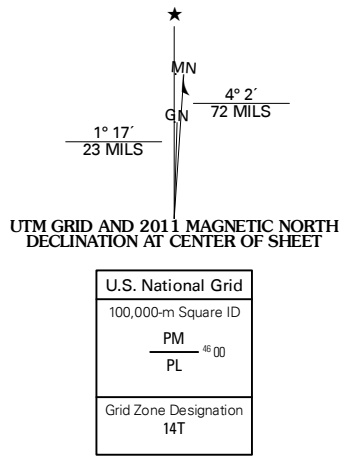


CLARKSON SE QUADRANGLE  
NEBRASKA-COLFAX CO.  
7.5-MINUTE SERIES



Produced by the United States Geological Survey  
North American Datum of 1983 (NAD83)  
World Geodetic System of 1984 (WGS84). Projection and  
1 000-meter grid: Universal Transverse Mercator, Zone 14T  
10 000-foot ticks: Nebraska Coordinate System of 1983

Imagery.....NAIP, July 2010  
Roads.....©2006-2011 TomTom  
Names.....GNIS, 2011  
Hydrography.....National Hydrography Dataset, 2009  
Contours.....National Elevation Dataset, 2002  
Boundaries.....Census, IBWC, IBC, USGS, 1972 - 2010



CONTOUR INTERVAL 10 FEET  
NORTH AMERICAN VERTICAL DATUM OF 1988  
This map was produced to conform with the  
National Geospatial Program US Topo Product Standard, 2011.  
A metadata file associated with this product is draft version 0.6.1



QUADRANGLE LOCATION

Leigh	Clarkson	Dodge
Clarkson SW	Clarkson SE	Dodge SW
Richland	Schuyler	Rogers

ADJOINING 7.5' QUADRANGLES

ROAD CLASSIFICATION		
Interstate Route	State Route	Local Road
US Route	4WD	
Ramp	Interstate Route	US Route
		State Route

CLARKSON SE, NE  
2011