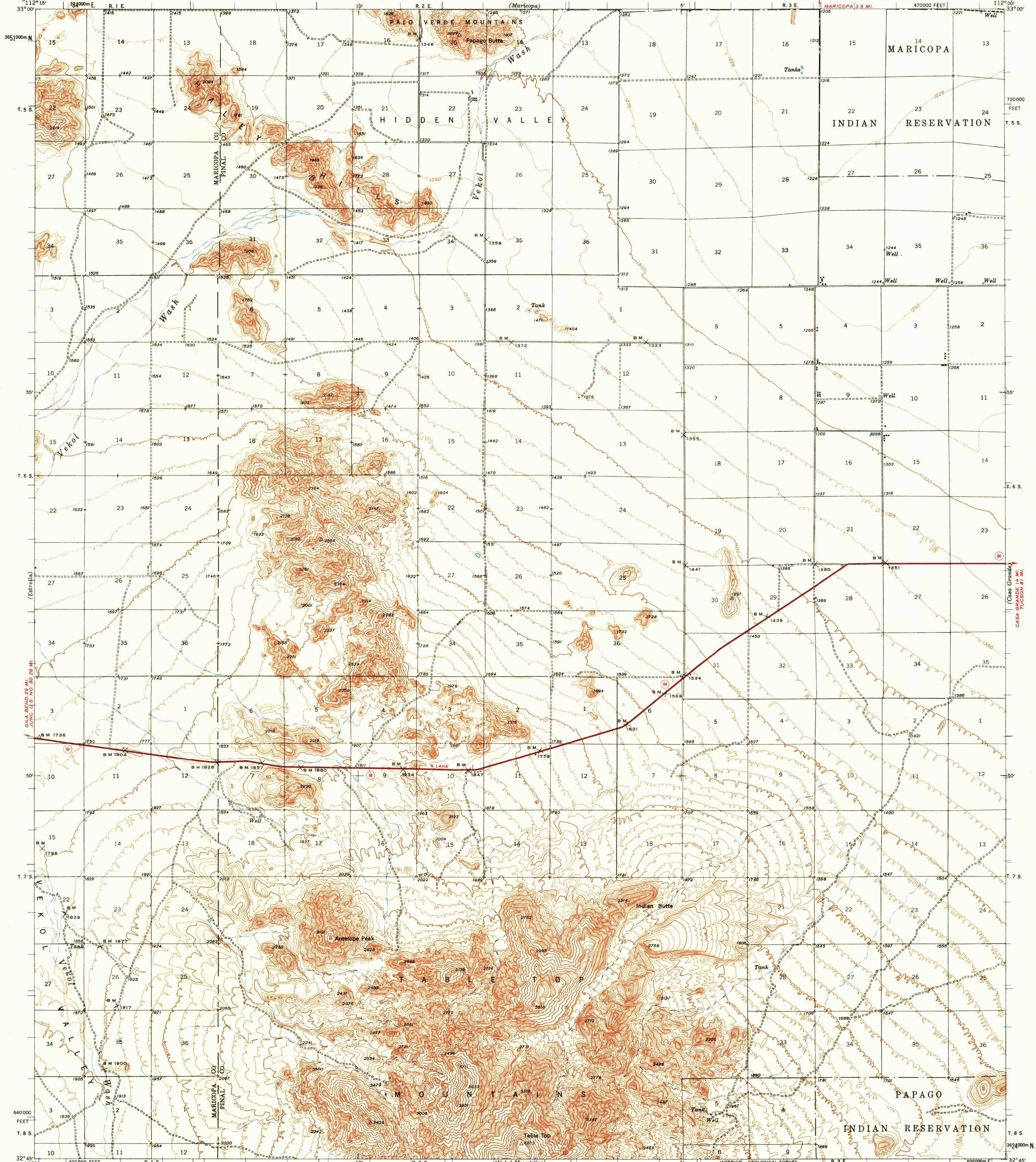


UNITED STATES
DEPARTMENT OF THE INTERIOR
GEOLOGICAL SURVEY

UNITED STATES
DEPARTMENT OF THE ARMY
CORPS OF ENGINEERS

ARIZONA
ANTELOPE PEAK QUADRANGLE
15-MINUTE SERIES



Mapped by the Geological Survey
1946

ROAD CLASSIFICATION
Heavy-duty ——— Light-duty ———
Unimproved dirt - - - - -
State Route ○

TRUE NORTH
MAGNETIC NORTH
APPROXIMATE MEAN
DECLINATION, 1946

SCALE 1:62500
1 2 3 4 MILES
3000 0 3000 6000 9000 12000 15000 18000 21000 FEET
1 2 3 4 KILOMETERS

CONTOUR INTERVAL 25 FEET
DATUM IS MEAN SEA LEVEL

USGS
Historical File
Topographic Division

Polyconic projection, 1927 North American datum
10,000-foot grid based on Arizona (Central)
rectangular coordinate system
1000-meter Universal Transverse Mercator grid ticks,
zone 12, shown in blue
To join Casa Grande map
use dotted projection corners

U.S.G.S.
FILE COPY
TOPOGRAPHIC DIVISION

ANTELOPE PEAK, ARIZ. MAR 13 1961
N3245-W11200/15
1946

THIS MAP AVAILABLE WITH OR WITHOUT SHADED RELIEF OVERPRINT
FOR SALE BY U.S. GEOLOGICAL SURVEY, DENVER 25, COLORADO, OR WASHINGTON 25, D. C.
A FOLDER DESCRIBING TOPOGRAPHIC MAPS AND SYMBOLS IS AVAILABLE ON REQUEST