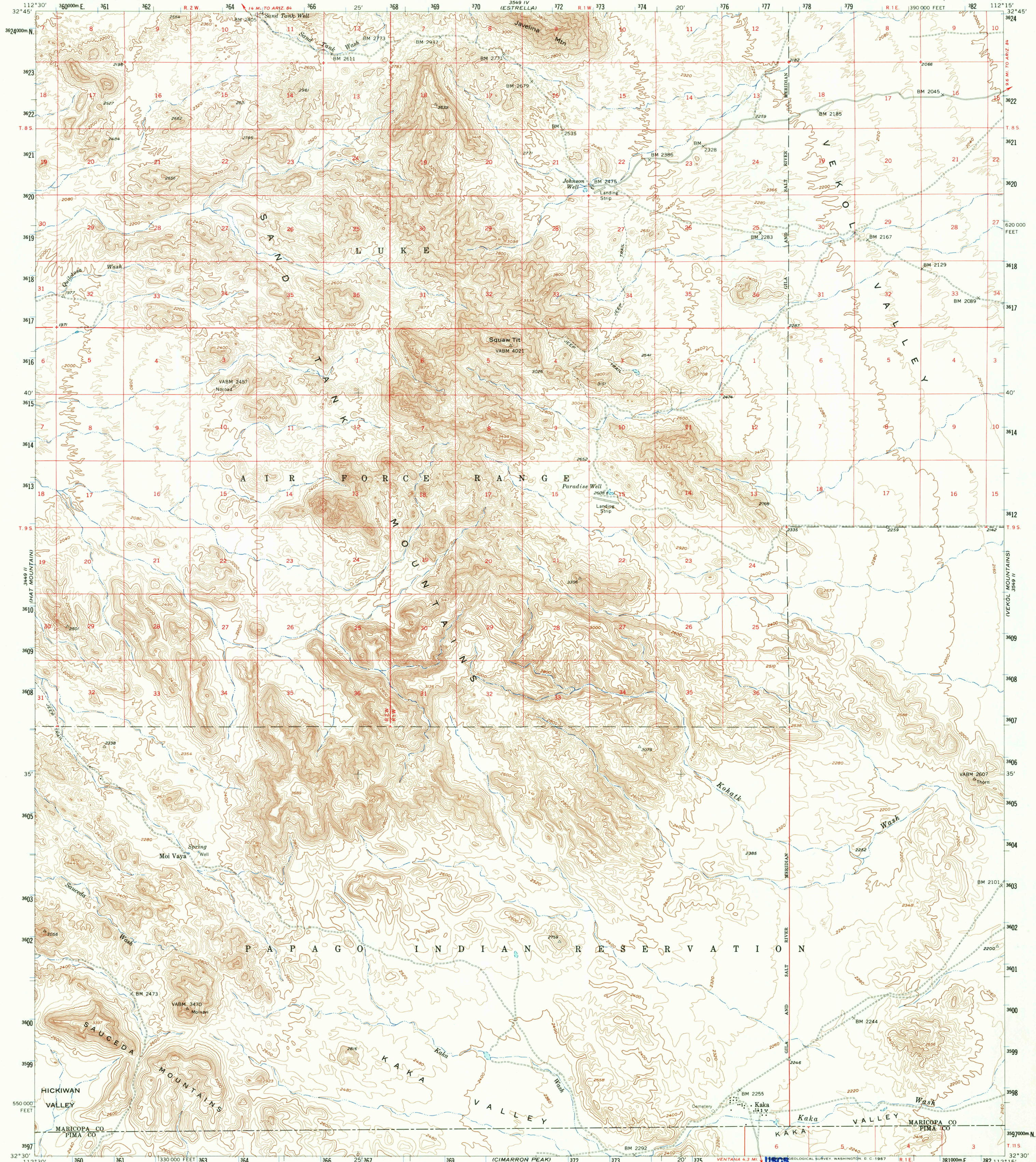


UNITED STATES
DEPARTMENT OF THE INTERIOR
GEOLOGICAL SURVEY

KAKA QUADRANGLE
ARIZONA
15 MINUTE SERIES (TOPOGRAPHIC)



Mapped, edited, and published by the Geological Survey

Control by USGS and USC&GS

Topography from aerial photographs by photogrammetric methods

Aerial photographs taken 1949. Field check 1958

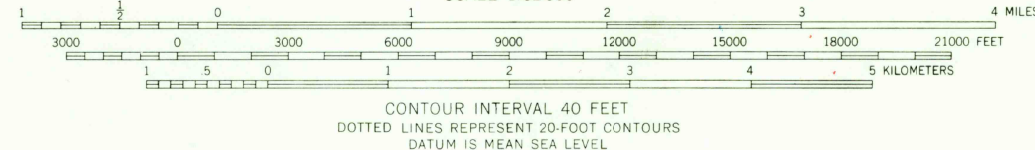
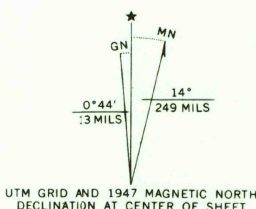
Polycyclic projection. 1927 North American datum

10,000-foot grid based on Arizona coordinate system, central zone

1000-meter Universal Transverse Mercator grid ticks, zone 12, shown in blue

Land lines unsurveyed in T. 10 and 11 S.-R. 1 and 2 W., T. 10 S.-R. 1 E., and parts of T. 9 S.-R. 1 E.

Unchecked elevations are shown in brown



THIS MAP COMPLIES WITH NATIONAL MAP ACCURACY STANDARDS
FOR SALE BY U. S. GEOLOGICAL SURVEY, DENVER, COLORADO 80225 OR WASHINGTON, D. C. 20242
A FOLDER DESCRIBING TOPOGRAPHIC MAPS AND SYMBOLS IS AVAILABLE ON REQUEST

Historical File
Topographic Division

ROAD CLASSIFICATION
Light-duty ————— Unimproved dirt —————



U.S.G.S.

FM 5 COPY
TOPOGRAPHIC DIVISION

KAKA, ARIZ.

N3230-W11215/15

1958

AMS 3549 III-SERIES V798

3090

JUN 9 1967