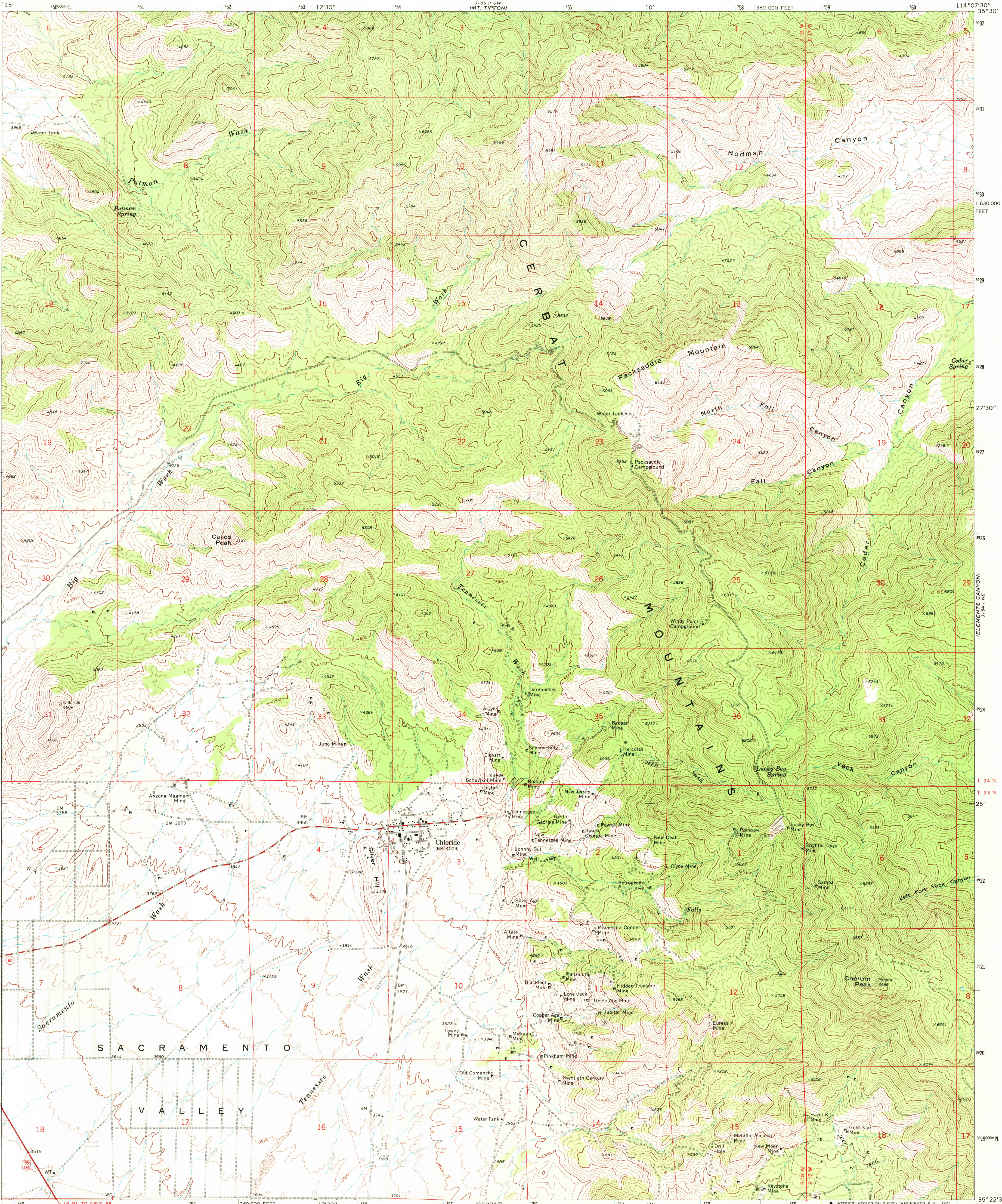
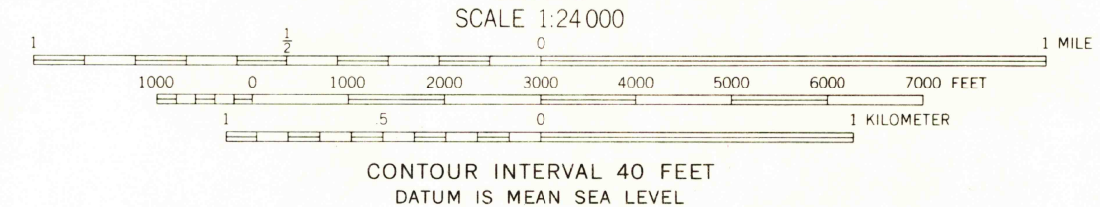
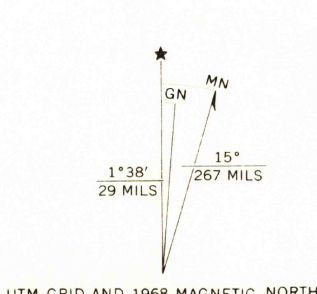


UNITED STATES  
DEPARTMENT OF THE INTERIOR  
GEOLOGICAL SURVEY

CHLORIDE QUADRANGLE  
ARIZONA - MOHAVE CO.  
7.5 MINUTE SERIES (TOPOGRAPHIC)  
NW/4 CHLORIDE 15' QUADRANGLE



Mapped, edited, and published by the Geological Survey  
Control by USGS and USC&GS  
Topography by photogrammetric methods from aerial  
photographs taken 1967. Field checked 1968  
Polyconic projection. 1927 North American datum  
10,000-foot grid based on Arizona coordinate system, west zone  
1000-meter Universal Transverse Mercator grid ticks,  
zone 11, shown in blue  
Fine red dashed lines indicate selected fence lines



ROAD CLASSIFICATION  
Heavy-duty ——— Light-duty ———  
Medium-duty ——— Unimproved dirt ———  
U.S. Route ——— State Route ———  
CHLORIDE, ARIZ.  
NW/4 CHLORIDE 15' QUADRANGLE  
N3522.5—W11407.5/7.5  
1968  
AMS 3154 I NW—SERIES V898

THIS MAP COMPLIES WITH NATIONAL MAP ACCURACY STANDARDS  
FOR SALE BY U. S. GEOLOGICAL SURVEY, DENVER, COLORADO 80225, OR WASHINGTON, D. C. 20242  
A FOLDER DESCRIBING TOPOGRAPHIC MAPS AND SYMBOLS IS AVAILABLE ON REQUEST

DEC 22 1971