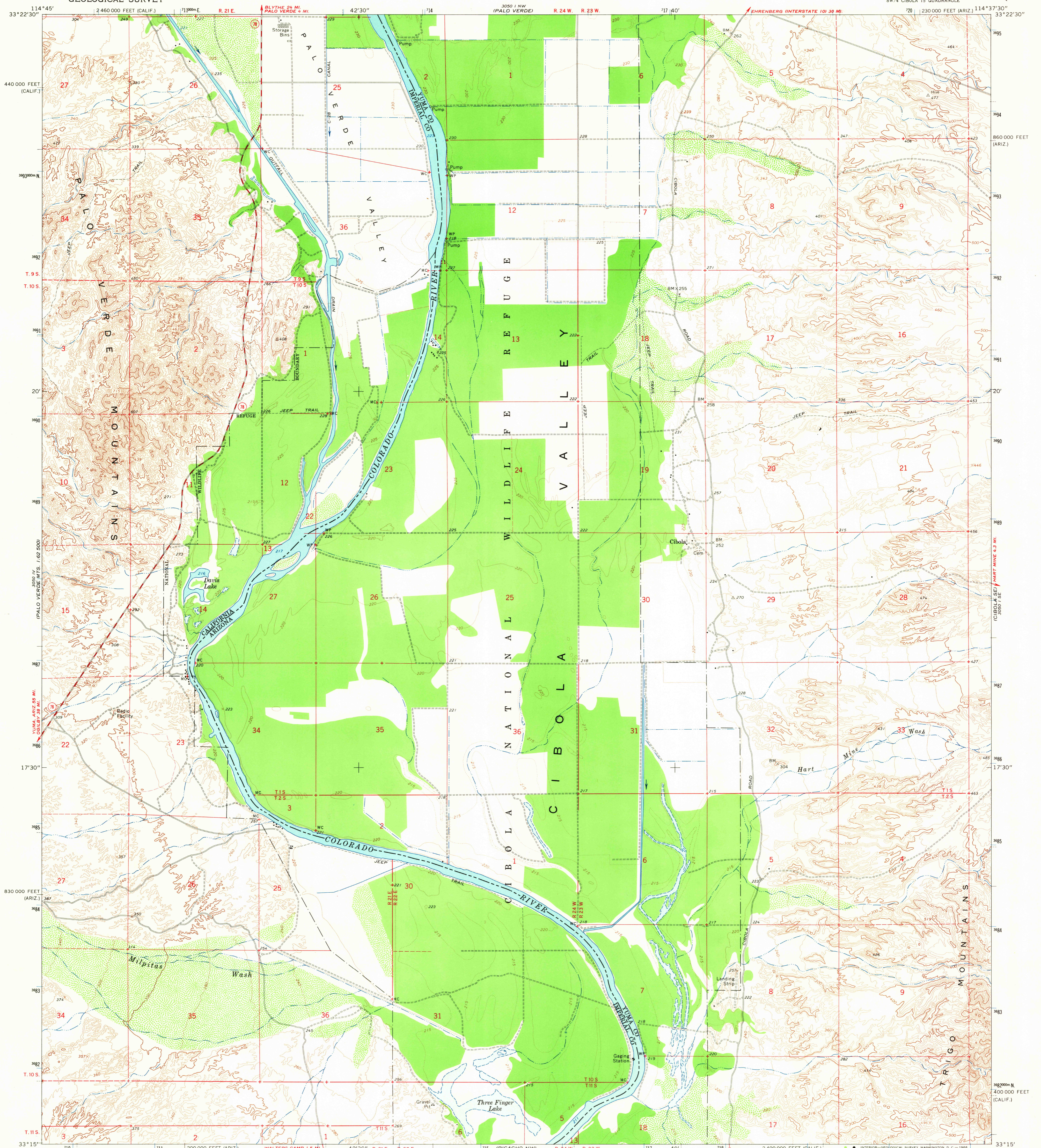
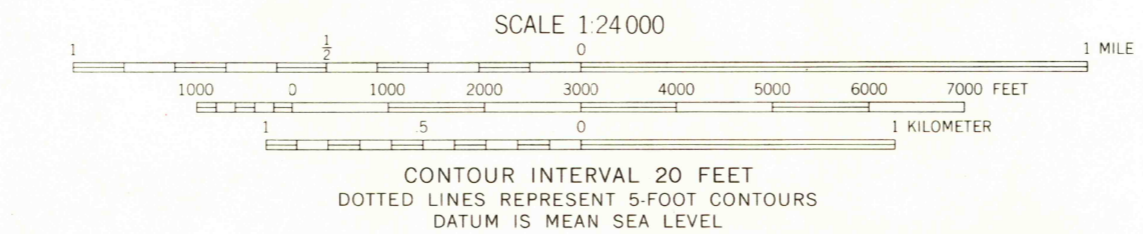
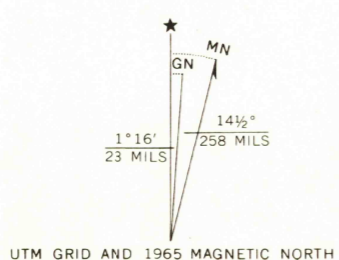


UNITED STATES  
DEPARTMENT OF THE INTERIOR  
GEOLOGICAL SURVEY

CIBOLA QUADRANGLE  
ARIZONA-CALIFORNIA  
7.5 MINUTE SERIES (TOPOGRAPHIC)  
SW 1/4 CIBOLA 15' QUADRANGLE



Mapped, edited, and published by the Geological Survey  
in cooperation with the Colorado River Boundary Commission  
of the States of Arizona and California  
Control by USGS and USC&GS  
Topography by photogrammetric methods from aerial photographs  
taken 1953. Field checked 1955. Revised from aerial  
photographs taken 1961. Field checked 1965  
Polyconic projection. 1927 North American datum.  
10,000-foot grids based on Arizona coordinate system, west zone  
and California coordinate system, zone 6  
1000-meter Universal Transverse Mercator grid ticks,  
zone 11, shown in blue  
Where omitted, land lines have not been established  
Fine red dashed lines indicate selected fence lines



USGS  
Historical File  
Topographic Division



ROAD CLASSIFICATION  
Medium-duty ——— Light-duty ———  
Unimproved dirt ———  
State Route ———  
U.S.G.S.  
FILE 10 107  
TOPOGRAPHIC DIVISION  
CIBOLA, ARIZ.-CALIF.  
SW 1/4 CIBOLA 15' QUADRANGLE  
N3315-W11437.5/7.5  
1965  
AMS 3050 1 SW-SERIES V898

THIS MAP COMPLIES WITH NATIONAL MAP ACCURACY STANDARDS  
FOR SALE BY U. S. GEOLOGICAL SURVEY, DENVER, COLORADO 80225, OR WASHINGTON, D. C. 20242  
A FOLDER DESCRIBING TOPOGRAPHIC MAPS AND SYMBOLS IS AVAILABLE ON REQUEST