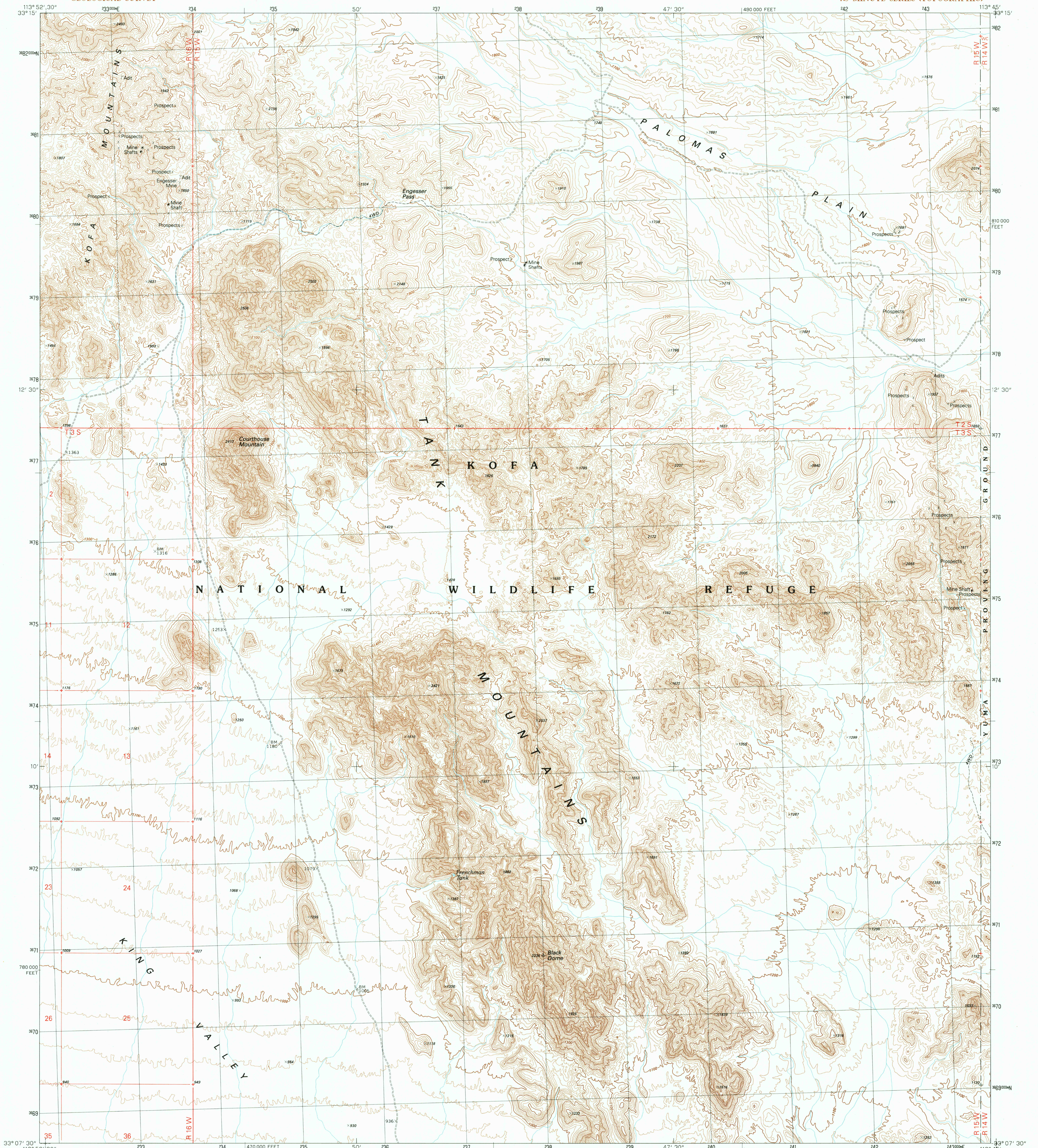


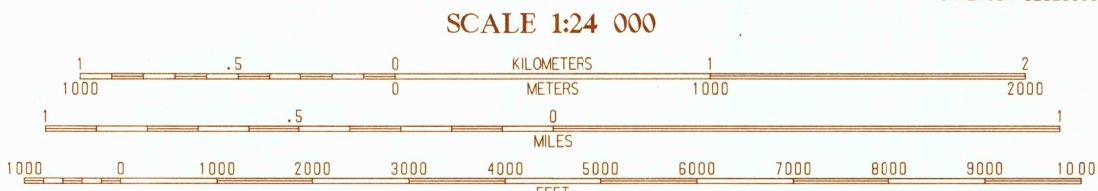
UNITED STATES
DEPARTMENT OF THE INTERIOR
GEOLOGICAL SURVEY

ENGESSER PASS QUADRANGLE
ARIZONA-YUMA CO.
7.5 MINUTE SERIES (TOPOGRAPHIC)



PRODUCED BY THE UNITED STATES GEOLOGICAL SURVEY
CONTROL BY USGS, NOS/NOAA
COMPILED FROM AERIAL PHOTOGRAPHS TAKEN 1962 AND 1963
FIELD CHECKED 1965
LIMITED REVISION FROM AERIAL PHOTOGRAPHS TAKEN 1965
FIELD CHECKED 1987
MAP EDITED 1990
PROJECTION TRANSVERSE MERCATOR
GRID 1000-METER UNIVERSAL TRANSVERSE MERCATOR
GRID 1000-FOOT STATE GRID TICS
UTM ARIZONA, WEST ZONE
HORIZONTAL DATUM 1927 NORTH AMERICAN DATUM
To place on the predicted North American Datum of 1983,
move the projection lines as shown by dashed corner ticks
(3 meters south and 70 meters east)
There may be private inholdings within the boundaries of any
Federal and State Reservations shown on this map
Where omitted, land lines have not been established
Public Land Survey System is shown as published in 1965 and
verified or supplemented in 1987

PROVISIONAL MAP
Produced from original
manuscript drawings. Infor-
mation shown as of date of
field check. T



THIS MAP COMPLIES WITH NATIONAL MAP ACCURACY STANDARDS
FOR SALE BY U.S. GEOLOGICAL SURVEY, DENVER, COLORADO 80225
OR RESTON, VIRGINIA 22092

JAN 28 1991
REC'D FILE COPY

1	2	3
4	5	6
7	8	

ADJOINING 7.5' QUADRANGLE NAMES

ROAD LEGEND
Improved Road
Unimproved Road
Trail
Interstate Route U.S. Route State Route

ENGESSER PASS, ARIZONA
PROVISIONAL EDITION 1990

33113-B7-TF-024