

NOV 22 1949

FILE COPY

MAMMOTH, ARIZ.
EDITION OF 1949
N3237.5-W1037.5/7.5

FOR SALE BY U. S. GEOLOGICAL SURVEY, WASHINGTON 25, D. C.
THIS MAP COMPLETES WITH NATIONAL MAP ACCURACY STANDARDS

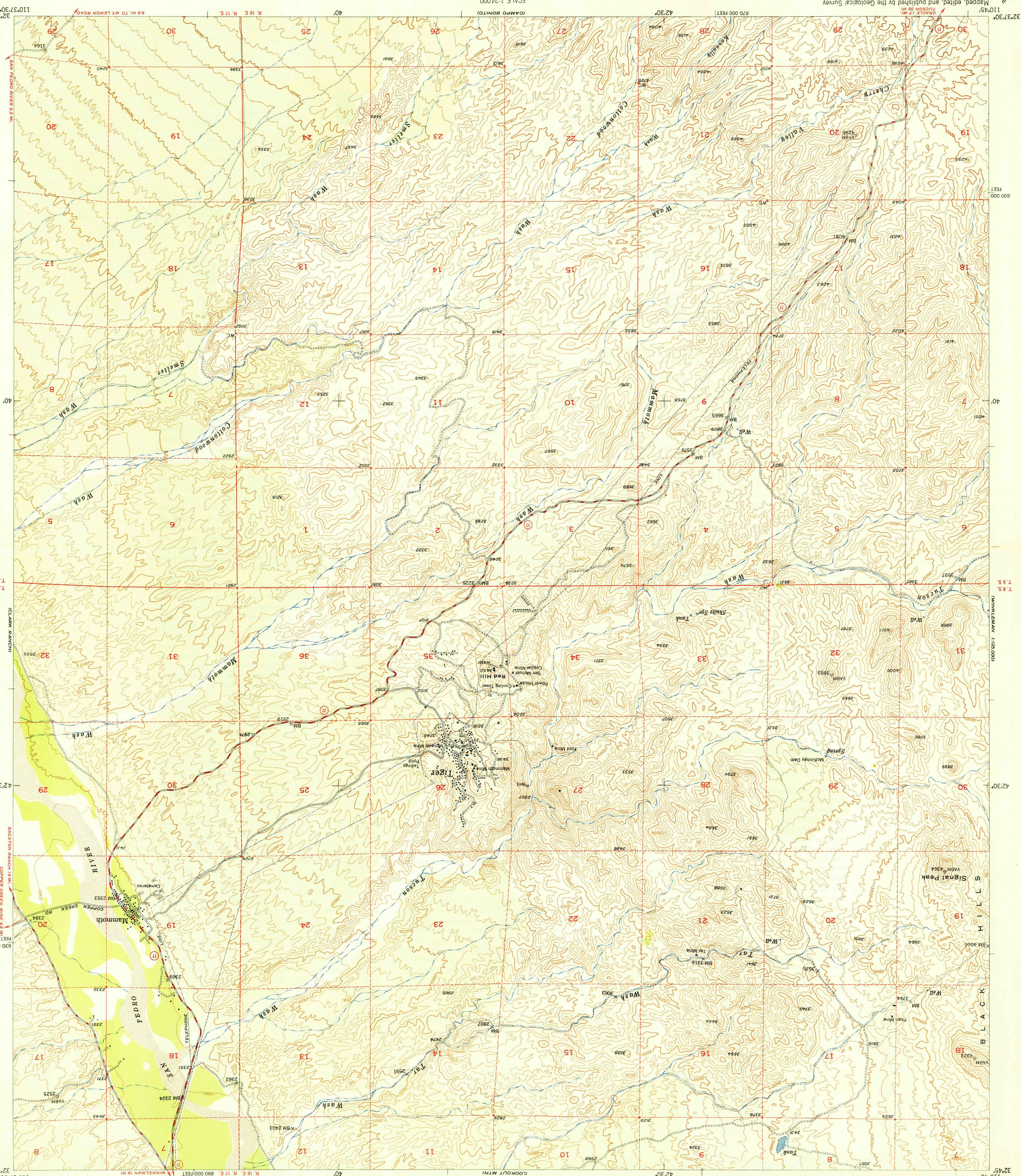
TRUE NORTH
MAGNETIC NORTH
DECLINATION, 1948
APPROXIMATE MEAN

Control by USGS and USC&GS
Topography from aerial photographs by multiple methods
aerial photographs taken 1945. Field check 1948
Polyconic projection. 1927 North American datum
10,000-foot grid based on Arizona coordinate system.
Central zone
Dashed land lines indicate approximate location
Unchecked elevations are shown in brown

ROAD CLASSIFICATION
HARD-SURFACE ALL WEATHER ROADS
IMPROVED DIRT
UNIMPROVED DIRT
MEDIUM-DUTY, GRADED, OR NARROW HARD-SURFACE
LOOSE-SURFACE, GRADED, OR NARROW HARD-SURFACE
U. S. Route
State Route

USGS
Topographic Division
WOODLAND
Woods-Brushwood
Scrub

SCALE 1:24,000
CONTOUR INTERVAL 40 FEET
DATUM IS MEAN SEA LEVEL
1 MILE
1 KILOMETER



UNITED STATES
DEPARTMENT OF THE INTERIOR
GEOLOGICAL SURVEY
UNITED STATES
DEPARTMENT OF THE ARMY
CORPS OF ENGINEERS
7.5 MINUTE SERIES (TOPOGRAPHIC)
ARIZONA-PINAL CO.
MAMMOTH QUADRANGLE
WOLLY JOE BEAN