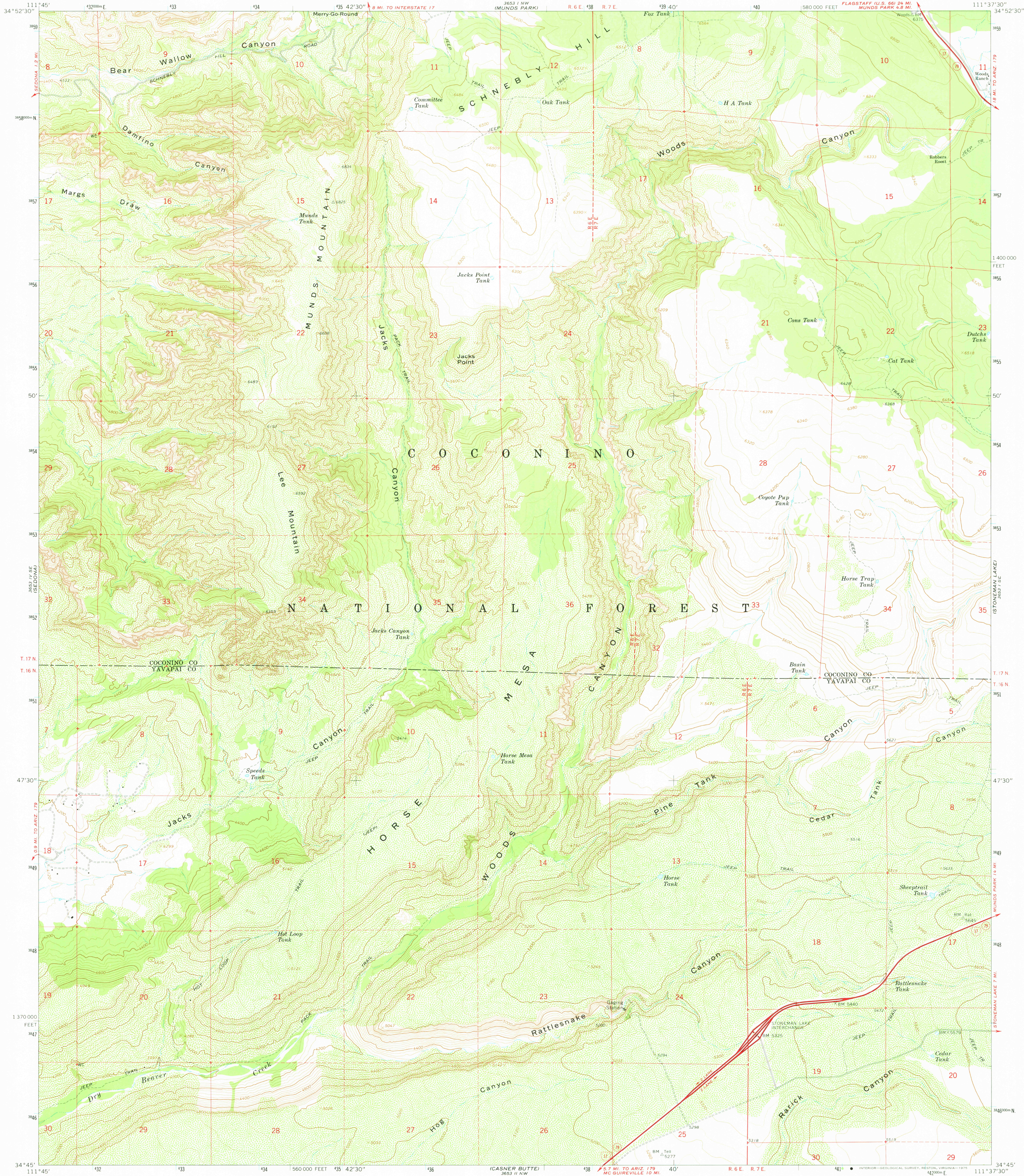
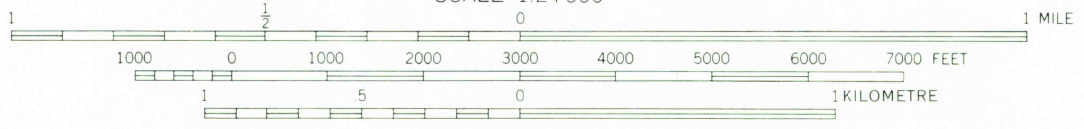
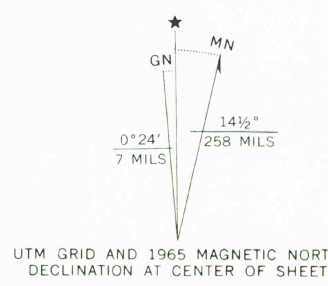


UNITED STATES
DEPARTMENT OF THE INTERIOR
GEOLOGICAL SURVEY

MUNDS MOUNTAIN QUADRANGLE
ARIZONA
7.5 MINUTE SERIES (TOPOGRAPHIC)



Mapped by the U. S. Forest Service
Edited and published by the Geological Survey
Control by USGS, USC&GS, and USFS
Topography by photogrammetric methods from aerial
photographs taken 1962. Field checked by USGS 1965
Polyconic projection. 1927 North American datum
10,000-foot grid based on Arizona coordinate system, central zone
1000-metre Universal Transverse Mercator grid ticks,
zone 12, shown in blue
Where omitted, land lines have not been established



CONTOUR INTERVAL 40 FEET
DOTTED LINES REPRESENT 20-FOOT CONTOURS
NATIONAL GEODETIC VERTICAL DATUM OF 1929

THIS MAP COMPLIES WITH NATIONAL MAP ACCURACY STANDARDS
FOR SALE BY U. S. GEOLOGICAL SURVEY, DENVER, COLORADO 80225, OR RESTON, VIRGINIA 22092
A FOLDER DESCRIBING TOPOGRAPHIC MAPS AND SYMBOLS IS AVAILABLE ON REQUEST



USGS
Historical File
Topographic Division

MUNDS MOUNTAIN, ARIZ.
N3445—W11137.5/7.5

1965
AMS 3653 1 SW—SERIES V898

MAR 2 1 1975

4550