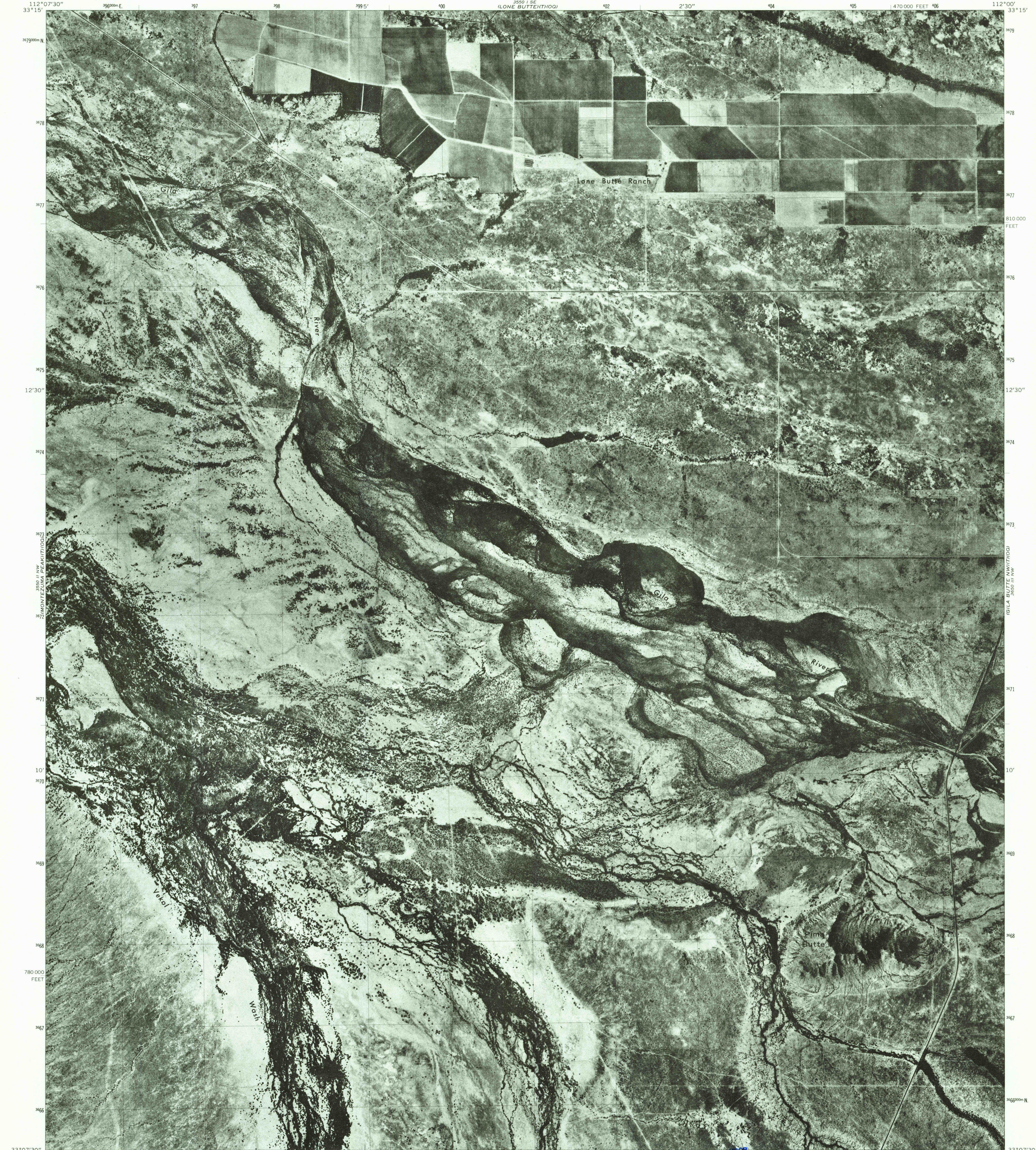
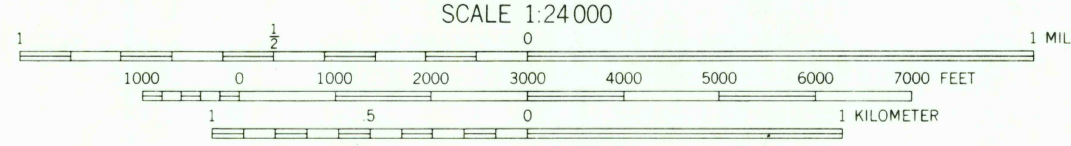
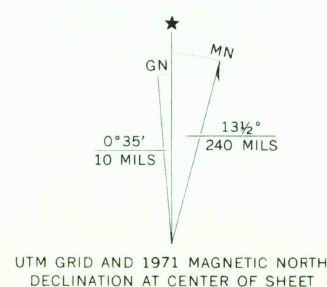


UNITED STATES  
DEPARTMENT OF THE INTERIOR  
GEOLOGICAL SURVEY

PIMA BUTTE QUADRANGLE  
ARIZONA—PINAL CO.—MARICOPA CO.  
7.5 MINUTE SERIES ORTHOPHOTOQUAD  
NE/4 MARICOPA 15' QUADRANGLE



Prepared and published by the Geological Survey  
Controlled orthophotomosaic by photogrammetric methods  
from 1:78 000-scale aerial photographs taken June—July 1971  
Transverse Mercator projection. 1927 North American datum  
1000-meter Universal Transverse Mercator grid, zone 12  
10,000-foot grid ticks based on Arizona coordinate system,  
central zone



THIS MAP COMPLIES WITH NATIONAL MAP ACCURACY STANDARDS  
FOR SALE BY U. S. GEOLOGICAL SURVEY, DENVER, COLORADO 80225, OR WASHINGTON, D. C. 20242

USGS  
Historical File  
Topographic Division



This quadrangle area also covered by  
1:24 000-scale standard topographic map  
Adjoining map coverage:  
(T) following quadrangle name indicates  
standard topographic map available  
(OQ) following quadrangle name indicates  
orthophotoquad available

PIMA BUTTE, ARIZ.  
NE/4 MARICOPA 15' QUADRANGLE  
N3307.5—W11200/7.5

1971

AMS 3550 II NE—SERIES V898

DEC 8 1972  
1557