

238 1/2 MI. NW
DANE CANYON



U.S. DEPARTMENT OF THE INTERIOR
U.S. GEOLOGICAL SURVEY

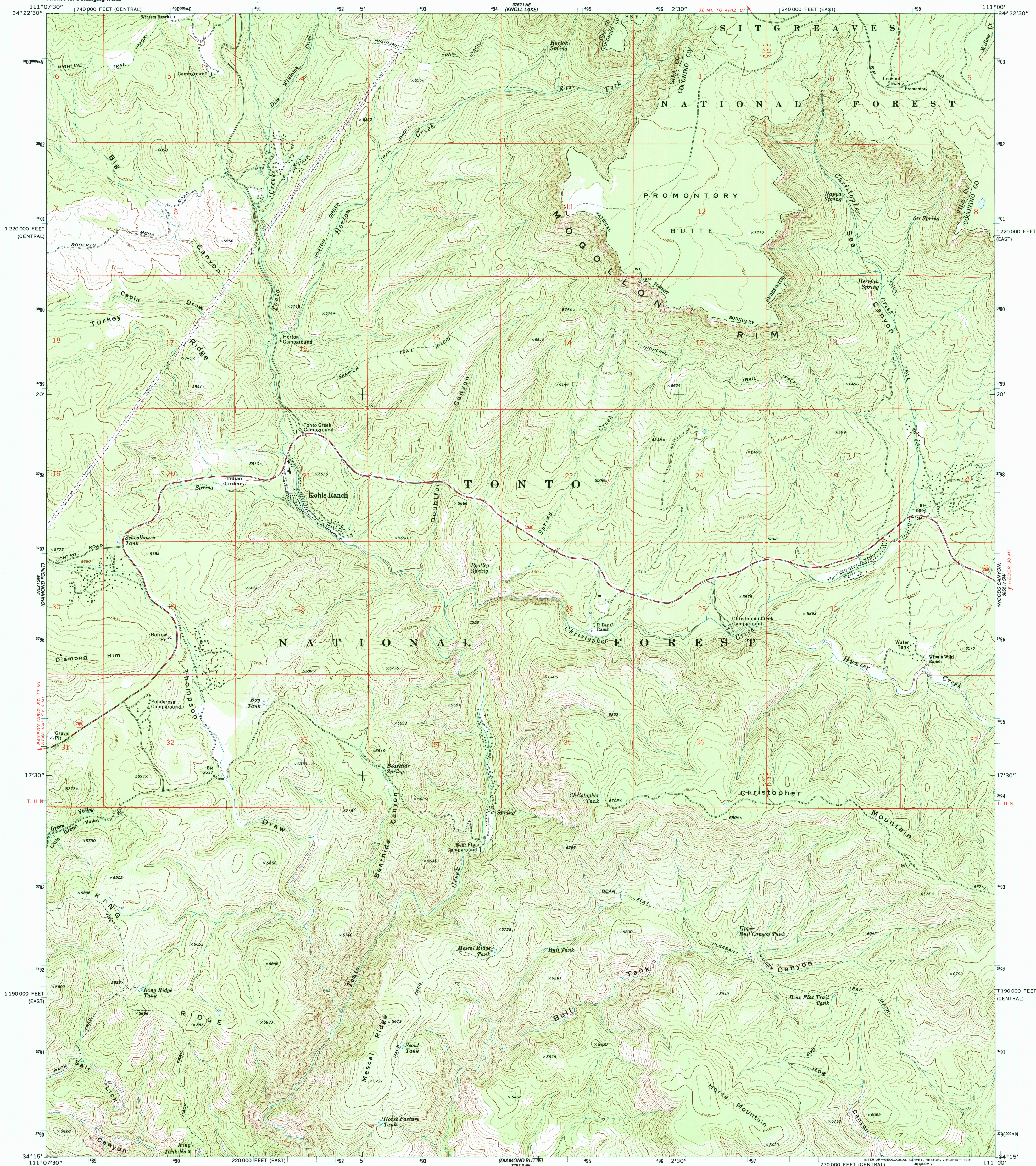
PROMONTORY BUTTE QUADRANGLE

ARIZONA

7.5 MINUTE SERIES (TOPOGRAPHIC)

SE/4 PROMONTORY BUTTE 15' QUADRANGLE

238 1/2 MI. NW
DANE CANYON



1/2 MI. NW
MC DONALD MTL

Mapped by the U.S. Forest Service
Edited and published by the Geological Survey
Control by USGS, NOS/NOAA, and USFS
Topography by photogrammetric methods from aerial photographs taken 1965. Field checked by the USGS 1973
Projection: Arizona coordinate system, east zone (Transverse Mercator)
10,000-foot grid ticks based on Arizona coordinate system, east and central zones
1000-meter Universal Transverse Mercator grid ticks, zone 12, shown in blue. 1927 North American Datum
The difference between 1927 North American Datum and North American Datum of 1983 (NAD 83) for 7.5 minute intersections is given in USGS Bulletin 1875. The NAD 83 is shown by dashed corner ticks

There may be private inholdings within the boundaries of the National or State reservations shown on this map

THIS MAP COMPLIES WITH NATIONAL MAP ACCURACY STANDARDS
FOR SALE BY U.S. GEOLOGICAL SURVEY, P.O. BOX 25286, DENVER, COLORADO 80225
A FOLDER DESCRIBING TOPOGRAPHIC MAPS AND SYMBOLS IS AVAILABLE ON REQUEST



ROAD CLASSIFICATION
Primary highway, hard surface
Secondary highway, hard surface
Unimproved road
Interstate Route
U. S. Route
State Route

RECEIVED PROMONTORY BUTTE, ARIZ.
OCT 31 1998
USGS NMD
HISTORICAL MAP ARCHIVES

1/2 MI. NW
DANE CANYON

