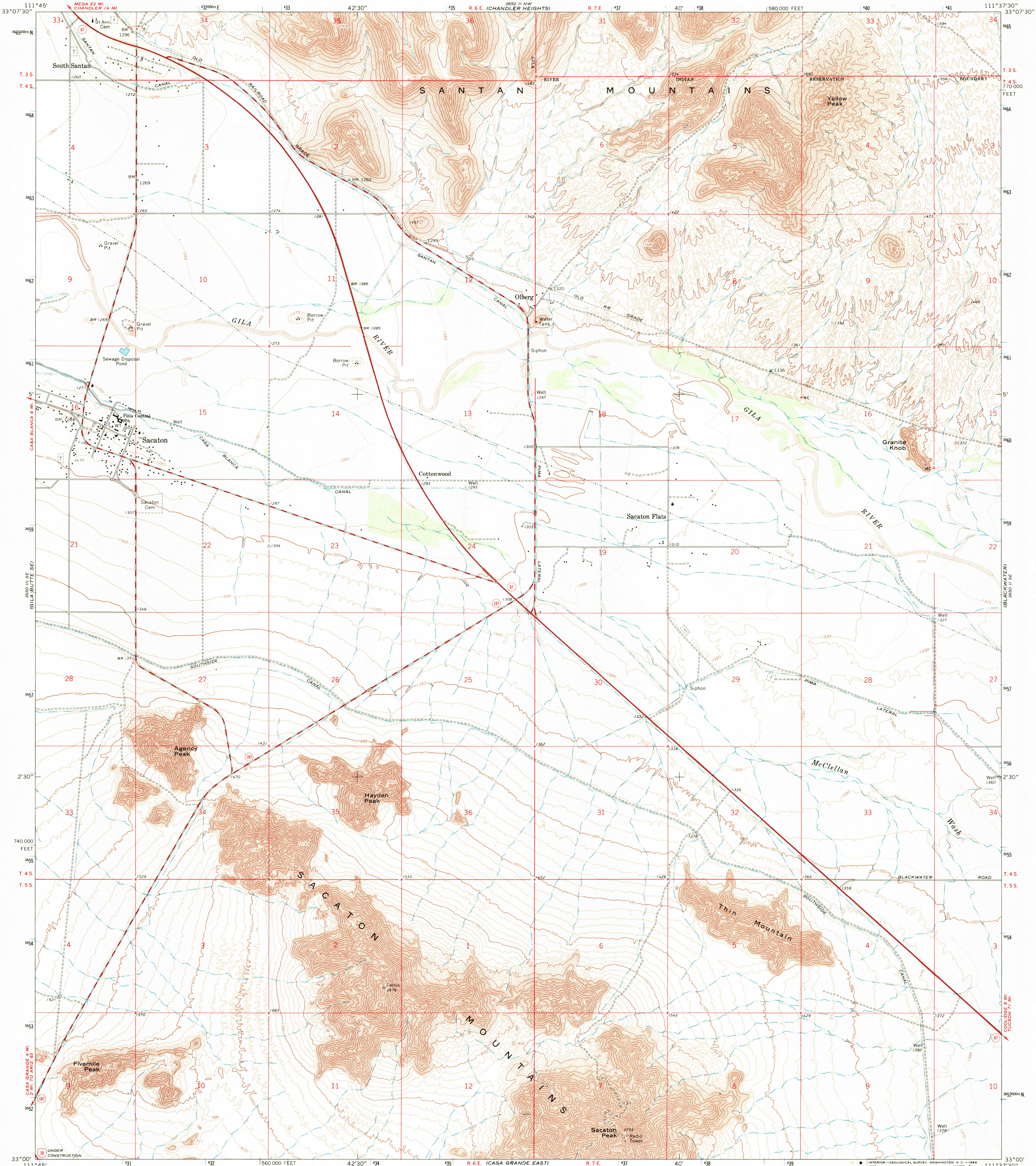
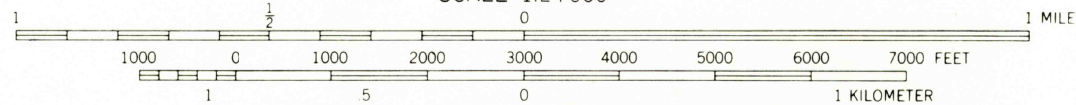
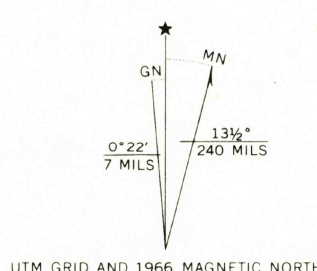


UNITED STATES
DEPARTMENT OF THE INTERIOR
GEOLOGICAL SURVEY

SACATON QUADRANGLE
ARIZONA—PINAL CO.
7.5 MINUTE SERIES (TOPOGRAPHIC)
SW/4 SACATON 15' QUADRANGLE



Mapped, edited, and published by the Geological Survey
Control by USGS, USC&GS, and USCE
Topography by photogrammetric methods from aerial
photographs taken 1963. Field checked 1966
Polyconic projection. 1927 North American datum
10,000-foot grid based on Arizona coordinate system, central zone
1000-meter Universal Transverse Mercator grid ticks,
zone 12, shown in blue



CONTOUR INTERVAL 10 FEET
DOTTED LINES REPRESENT 5-FOOT CONTOURS
DATUM IS MEAN SEA LEVEL

THIS MAP COMPLIES WITH NATIONAL MAP ACCURACY STANDARDS
FOR SALE BY U. S. GEOLOGICAL SURVEY, DENVER, COLORADO 80225, OR WASHINGTON, D. C. 20242
A FOLDER DESCRIBING TOPOGRAPHIC MAPS AND SYMBOLS IS AVAILABLE ON REQUEST

USGS
Historical File
Topographic Division



U.S.G.S.
FILE COPY
TOPOGRAPHIC DIVISION

ROAD CLASSIFICATION
Heavy-duty ——— Light-duty ———
Medium-duty ——— Unimproved dirt ———
Interstate Route ——— State Route ———

SACATON, ARIZ.
SW/4 SACATON 15' QUADRANGLE
N3300—W11137.5/7.5

1966

AMS 3650 II SW—SERIES V898

APR 2 1970