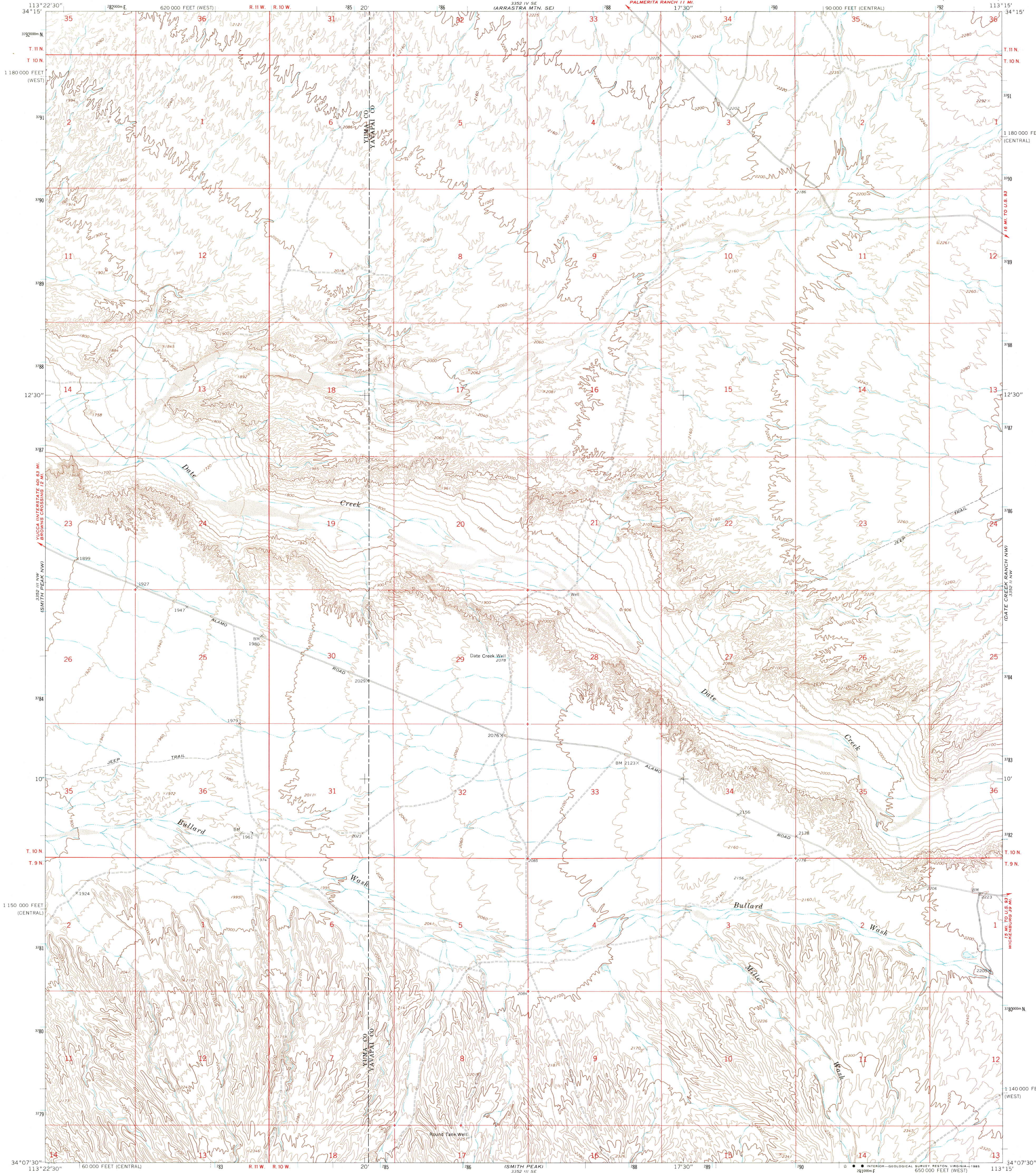
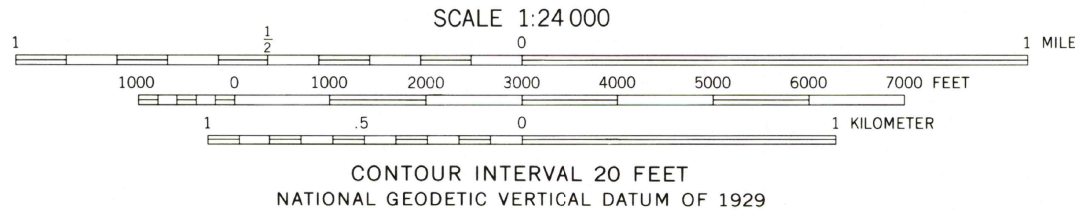
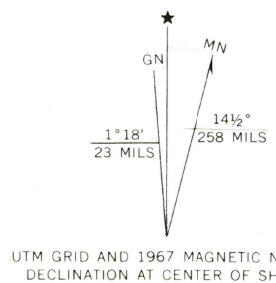


UNITED STATES  
DEPARTMENT OF THE INTERIOR  
GEOLOGICAL SURVEY

SMITH PEAK NE QUADRANGLE  
ARIZONA  
7.5 MINUTE SERIES (TOPOGRAPHIC)



Mapped, edited, and published by the Geological Survey  
Control by USGS and USC&GS  
Topography by photogrammetric methods from aerial  
photographs taken 1966. Field checked 1967  
Polyconic projection. 1927 North American datum  
10,000-foot grids based on Arizona coordinate system,  
central and west zones  
1000-meter Universal Transverse Mercator grid ticks,  
zone 12, shown in blue  
To place on the predicted North American Datum 1983  
move the projection lines 1 meter south and  
69 meters east as shown by dashed corner ticks  
Fine red dashed lines indicate selected fence lines



ROAD CLASSIFICATION  
Light-duty ————— Unimproved dirt - - - - -

SMITH PEAK NE, ARIZ.  
34113-B3-TF-024

1967

DMA 3352 III NE—SERIES V898