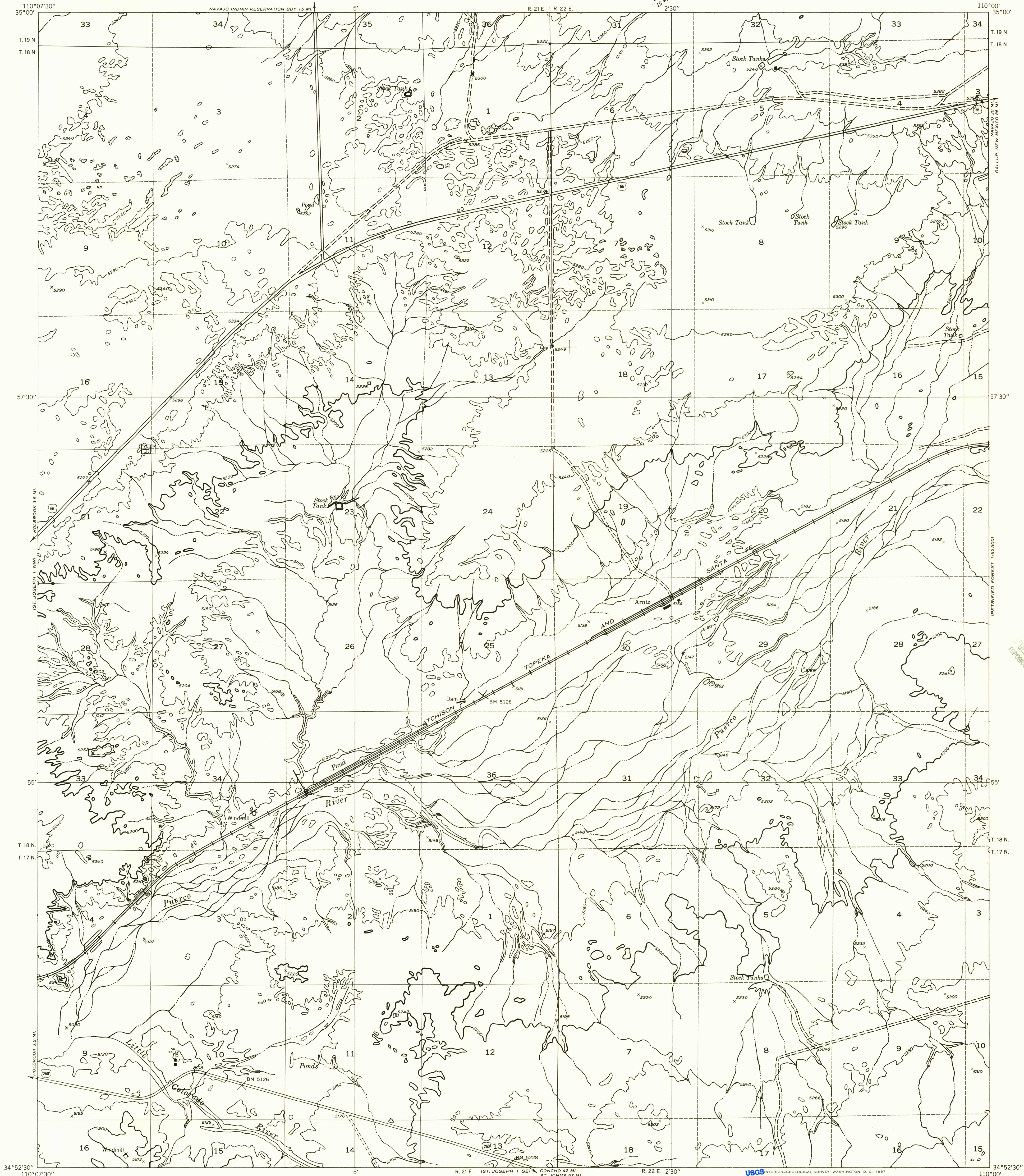


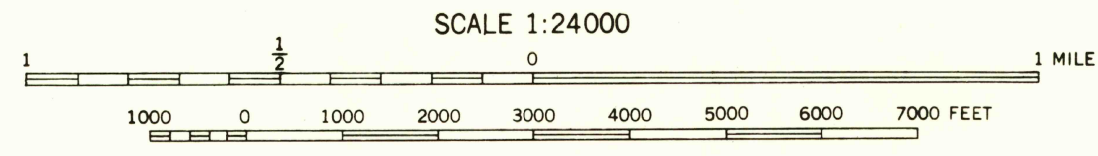
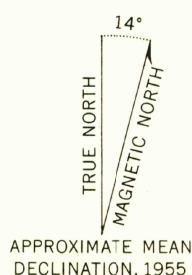
DEPARTMENT OF THE INTERIOR
GEOLOGICAL SURVEY

ST. JOSEPH 1 NE QUADRANGLE
ARIZONA-NAVAJO CO.

Preliminary edition
Pending completion of 1:62,500 scale
15 minute maps covering this area



Mapped by the Geological Survey 1955
Topography by multi-plex methods from
aerial photographs taken 1953
Dashed land lines indicate approximate locations
Symbols and other detail herein
drawn for 1:62,500 scale publication



CONTOUR INTERVAL 40 FEET
DATUM IS MEAN SEA LEVEL

USGS INTERIOR-GEOLOGICAL SURVEY, WASHINGTON, D. C. 20507
Historical File
Topographic Division

ROAD CLASSIFICATION
Improved ——— Unimproved - - - - -

U.S.G.S.
FILE COPY
TOPOGRAPHIC DIVISION

ST. JOSEPH 1 NE, ARIZ.
N3452.5-W11000/7.5

APR 2 1957