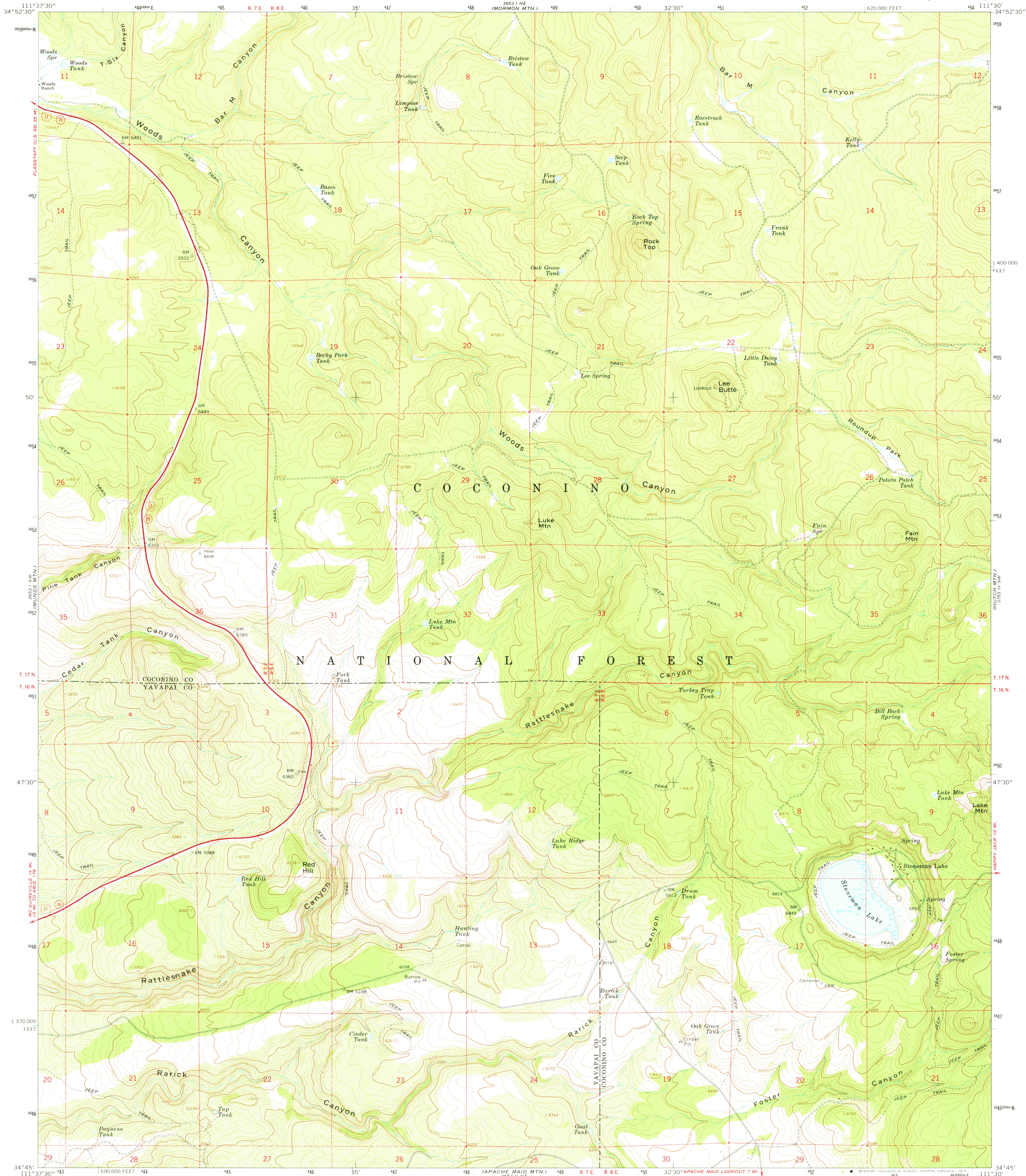
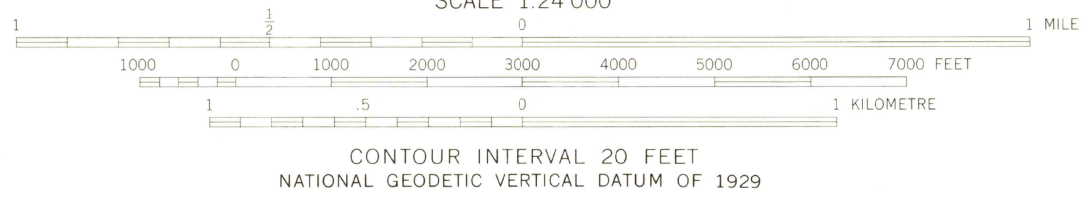
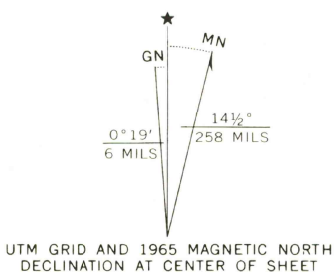


UNITED STATES
DEPARTMENT OF THE INTERIOR
GEOLOGICAL SURVEY

STONEMAN LAKE QUADRANGLE
ARIZONA
7.5 MINUTE SERIES (TOPOGRAPHIC)



Map by the U. S. Forest Service
Edited and published by the Geological Survey
Control by USGS, USC&GS, and USFS
Topography by photogrammetric methods from aerial
photographs taken 1962. Field checked by USGS 1965
Polyconic projection, 1927 North American datum
10,000-foot grid based on Arizona coordinate system, central zone
1000-metre Universal Transverse Mercator grid ticks,
zone 12, shown in blue



THIS MAP COMPLIES WITH NATIONAL MAP ACCURACY STANDARDS
FOR SALE BY U. S. GEOLOGICAL SURVEY, DENVER, COLORADO 80225, OR RESTON, VIRGINIA 22092
A FOLDER DESCRIBING TOPOGRAPHIC MAPS AND SYMBOLS IS AVAILABLE ON REQUEST



QUADRANGLE LOCATION

USGS
Historical File
Topographic Division

ROAD CLASSIFICATION
Heavy-duty Light-duty
Unimproved dirt

Interstate Route State Route

STONEMAN LAKE, ARIZ.
N3445-W11130/7.5

1965

AMS 3653 I SE-SERIES V898

MAR 2 1 1975