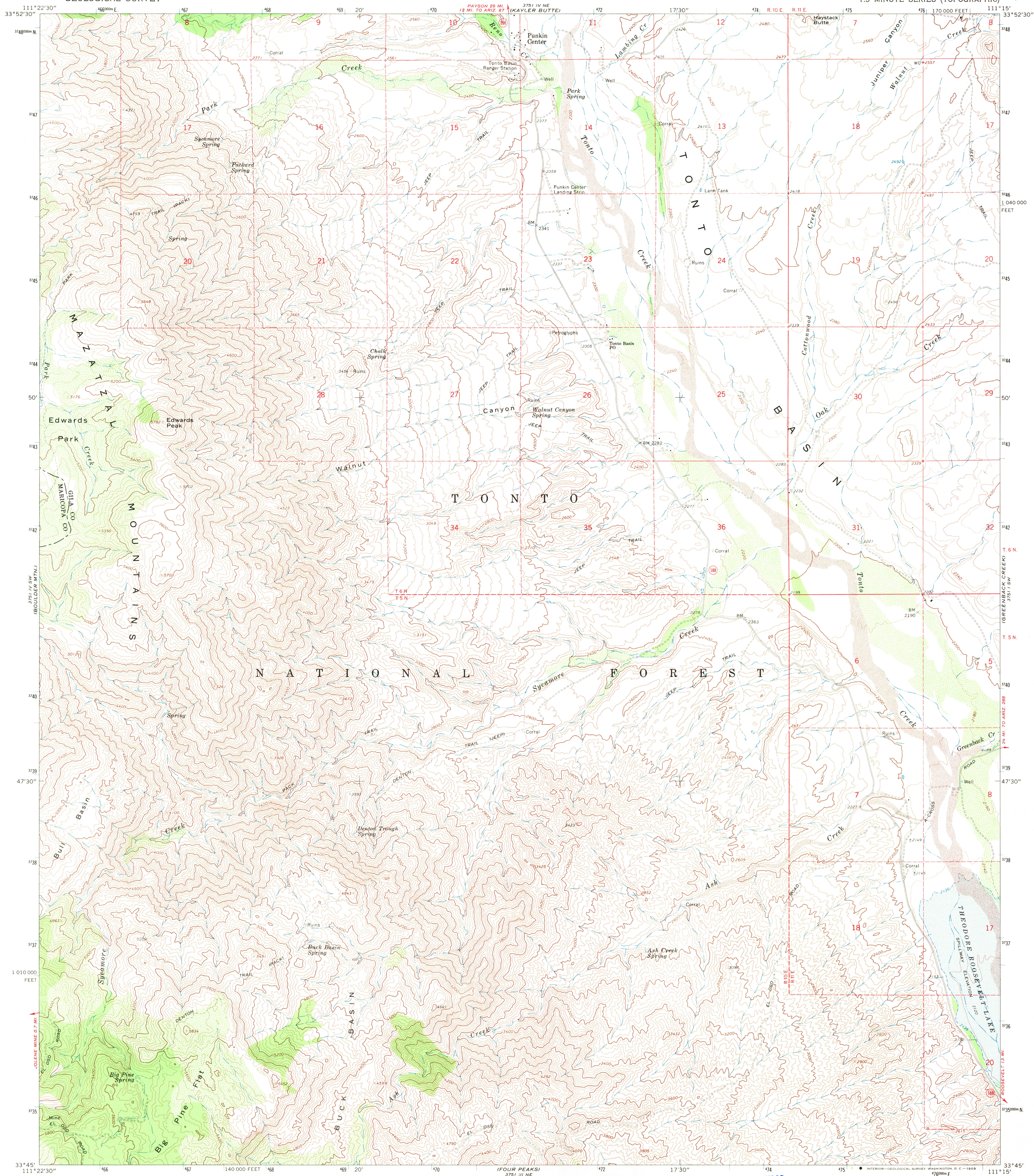
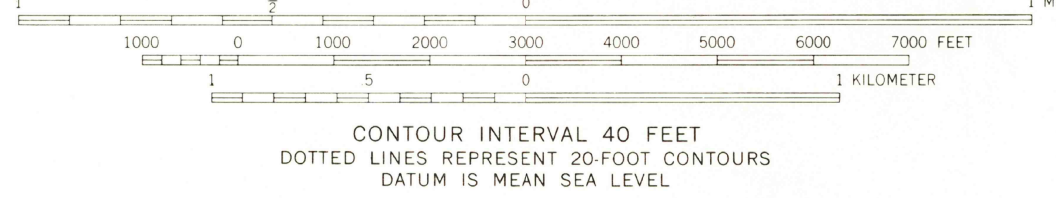
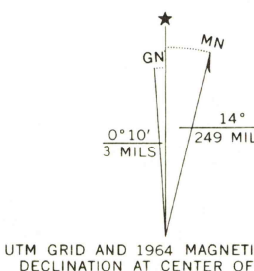


UNITED STATES
DEPARTMENT OF THE INTERIOR
GEOLOGICAL SURVEY

TONTO BASIN QUADRANGLE
ARIZONA
7.5 MINUTE SERIES (TOPOGRAPHIC)



Mapped, edited, and published by the Geological Survey
Control by USGS and USC&GS
Topography by photogrammetric methods from aerial
photographs taken 1962. Field checked 1964
Polyconic projection. 1927 North American datum
10,000 foot grid based on Arizona coordinate system, east zone
1000-meter Universal Transverse Mercator grid ticks,
zone 12, shown in blue
Fine red dashed lines indicate selected fence lines
Where omitted, land lines have not been established
Area covered by dashed light-blue pattern
is subject to controlled inundation



USGS
Historical File
Topographic Division



U.S.G.S.
FILE COPY
TOPOGRAPHIC DIVISION

ROAD CLASSIFICATION
Light-duty ——— Unimproved dirt ———
State Route (circle with number)
TONTO BASIN, ARIZ.
N3345-W11115/7.5
1964
AMS 3751 IV SE-SERIES V898

THIS MAP COMPLIES WITH NATIONAL MAP ACCURACY STANDARDS
FOR SALE BY U.S. GEOLOGICAL SURVEY, DENVER, COLORADO 80225, OR WASHINGTON, D. C. 20242
A FOLDER DESCRIBING TOPOGRAPHIC MAPS AND SYMBOLS IS AVAILABLE ON REQUEST

6340
SEP 12 1969