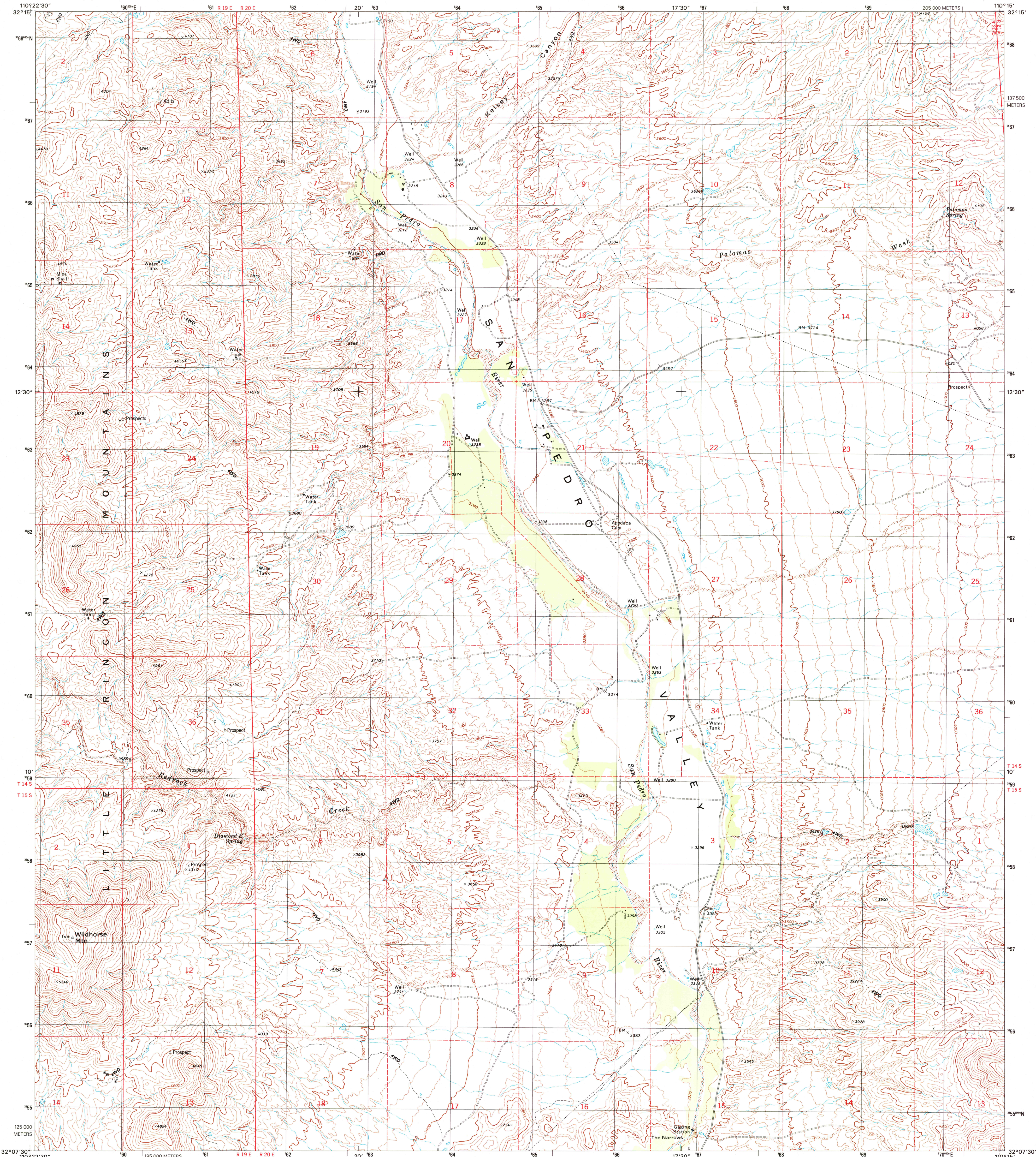




U.S. DEPARTMENT OF THE INTERIOR  
U.S. GEOLOGICAL SURVEY

WILDHORSE MOUNTAIN QUADRANGLE  
ARIZONA-COCHISE CO.  
7.5-MINUTE SERIES (TOPOGRAPHIC)

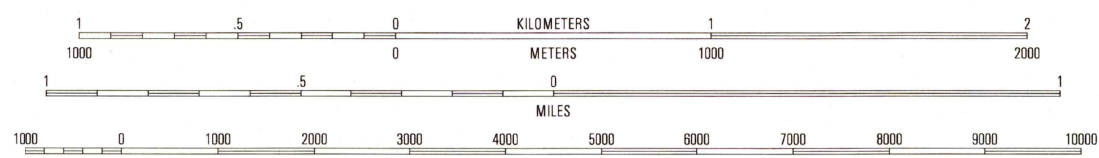


Produced by the United States Geological Survey  
Topography compiled 1972. Planimetry derived from imagery  
taken 1996 and other sources. Public Land Survey System and  
survey control current as of 1973. Boundaries current as of 2000  
North American Datum of 1983 (NAD 83). Projection and  
1 000-meter grid: Universal Transverse Mercator, zone 12  
2 500-meter ticks: Arizona Coordinate System of 1983  
(east zone)  
North American Datum of 1927 (NAD 27) is shown by dashed  
corner ticks. The values of the shift between NAD 83 and NAD 27  
for 7.5-minute intersections are obtainable from National Geodetic  
Survey NADCON software  
Houses of worship, schools, and other labeled buildings verified 1973

RECEIVED  
OCT 3 1 2001

HISTORICAL MAP ARCHIVES

UTM GRID AND 2000 MAGNETIC NORTH  
DECLINATION AT CENTER OF SHEET



CONTOUR INTERVAL 40 FEET  
NATIONAL GEODETIC VERTICAL DATUM OF 1929  
(TO CONVERT ELEVATIONS TO THE NORTH AMERICAN VERTICAL DATUM OF 1988, ADD 3 FEET)  
TO CONVERT FROM FEET TO METERS, MULTIPLY BY 0.3048

THIS MAP COMPLIES WITH NATIONAL MAP ACCURACY STANDARDS  
FOR SALE BY U.S. GEOLOGICAL SURVEY, P.O. BOX 25286, DENVER, COLORADO 80225  
A FOLDER DESCRIBING TOPOGRAPHIC MAPS AND SYMBOLS IS AVAILABLE ON REQUEST



QUADRANGLE LOCATION

1	2	3	1 Soza Canyon
4	5	2 Soza Mesa	
6	7	3 Hookers Hot Springs	
		4 Happy Valley	
		5 Deepwell Ranch	
		6 Gallata Flat West	
		7 Gallata Flat East	
		8 San Pedro Ranch	

ADJOINING 7.5' QUADRANGLE NAMES

ROAD CLASSIFICATION  
Primary highway  
hard surface .....  
Secondary highway  
hard surface .....  
Light-duty road, hard or  
improved surface .....  
Unimproved road .....  
Interstate Route  
U.S. Route  
State Route

WILDHORSE MOUNTAIN, AZ  
1996

NIMA 3948 III NE-SERIES V898

