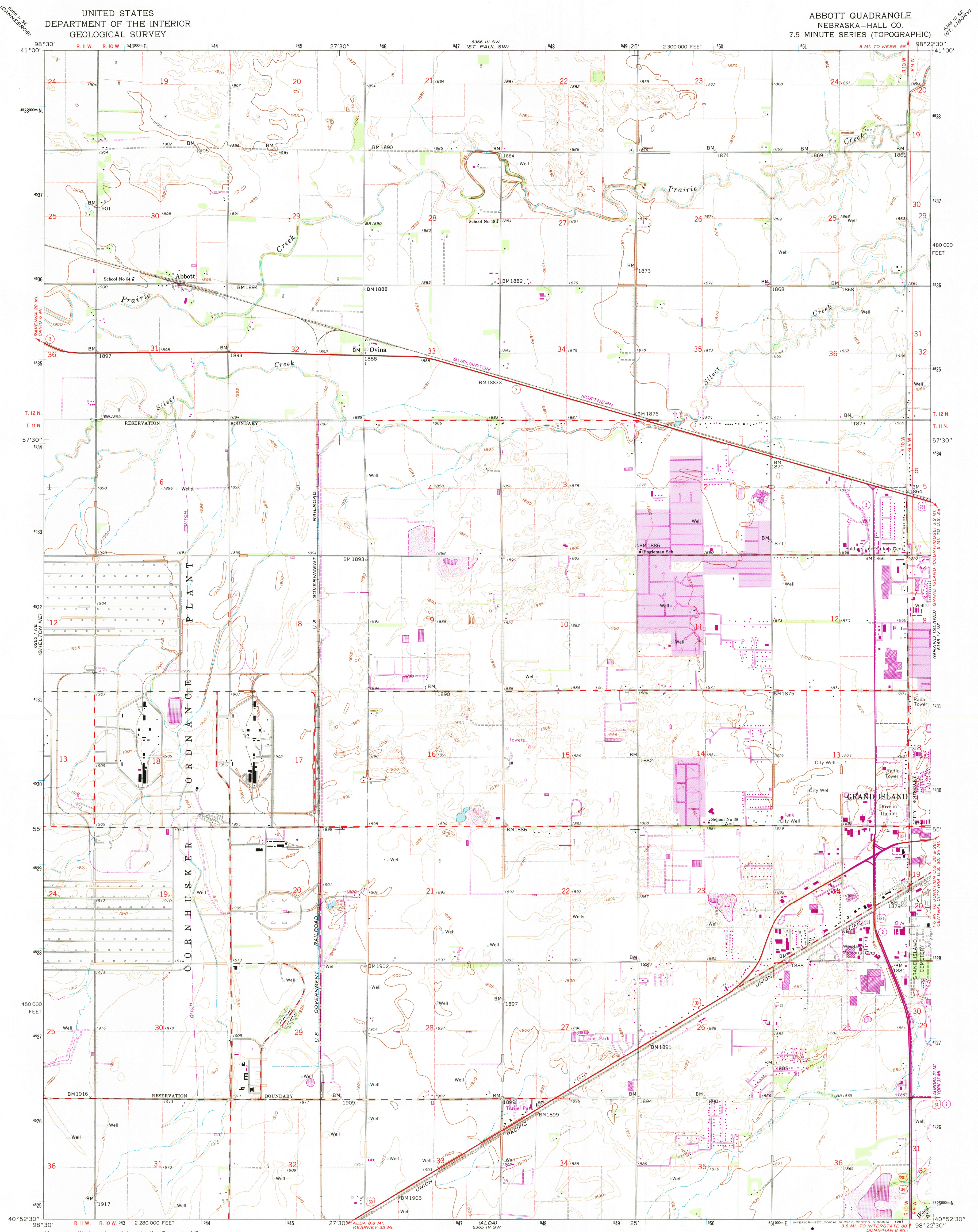
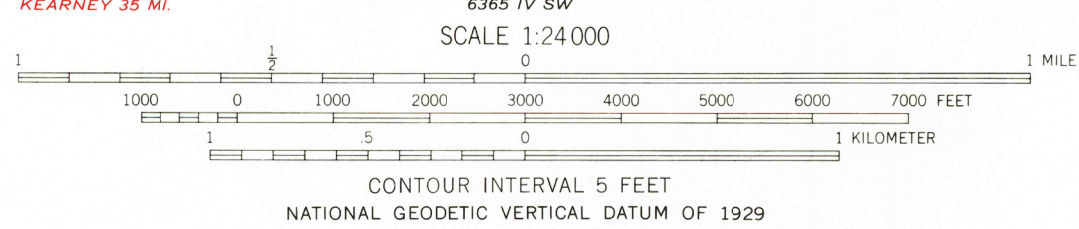
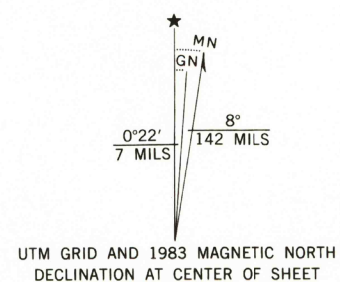


UNITED STATES
DEPARTMENT OF THE INTERIOR
GEOLOGICAL SURVEY

ABBOTT QUADRANGLE
NEBRASKA—HALL CO.
7.5 MINUTE SERIES (TOPOGRAPHIC)



Mapped, edited, and published by the Geological Survey as part of the Department of the Interior program for the development of the Missouri River Basin Control by USGS, USC&GS, and U.S. Bureau of Reclamation. Planimetry by photogrammetric methods from aerial photographs taken 1951. Topography by planimetric survey 1962. Polyconic projection. 1927 North American datum 10,000-foot grid based on Nebraska coordinate system, south zone 1000-meter Universal Transverse Mercator grid ticks, zone 14, shown in blue. To place on the predicted North American Datum 1983, move the projection lines 4 meters north and 30 meters east as shown by dashed corner ticks.



ROAD CLASSIFICATION	
Heavy-duty	Light-duty
Medium-duty	Unimproved dirt
U.S. Route	State Route

ABBOTT, NEBR.
N4052.5—W9822.5/7.5
1962
PHOTOREVISED 1983
DMA 6365 IV NW-SERIES 7875

Revisions shown in purple compiled from aerial photographs taken 1981 and other sources. This information not field checked. Map edited 1983. Purple tint indicates extension of urban area.

U.S. GEOLOGICAL SURVEY
NATIONAL MAP ARCHIVES