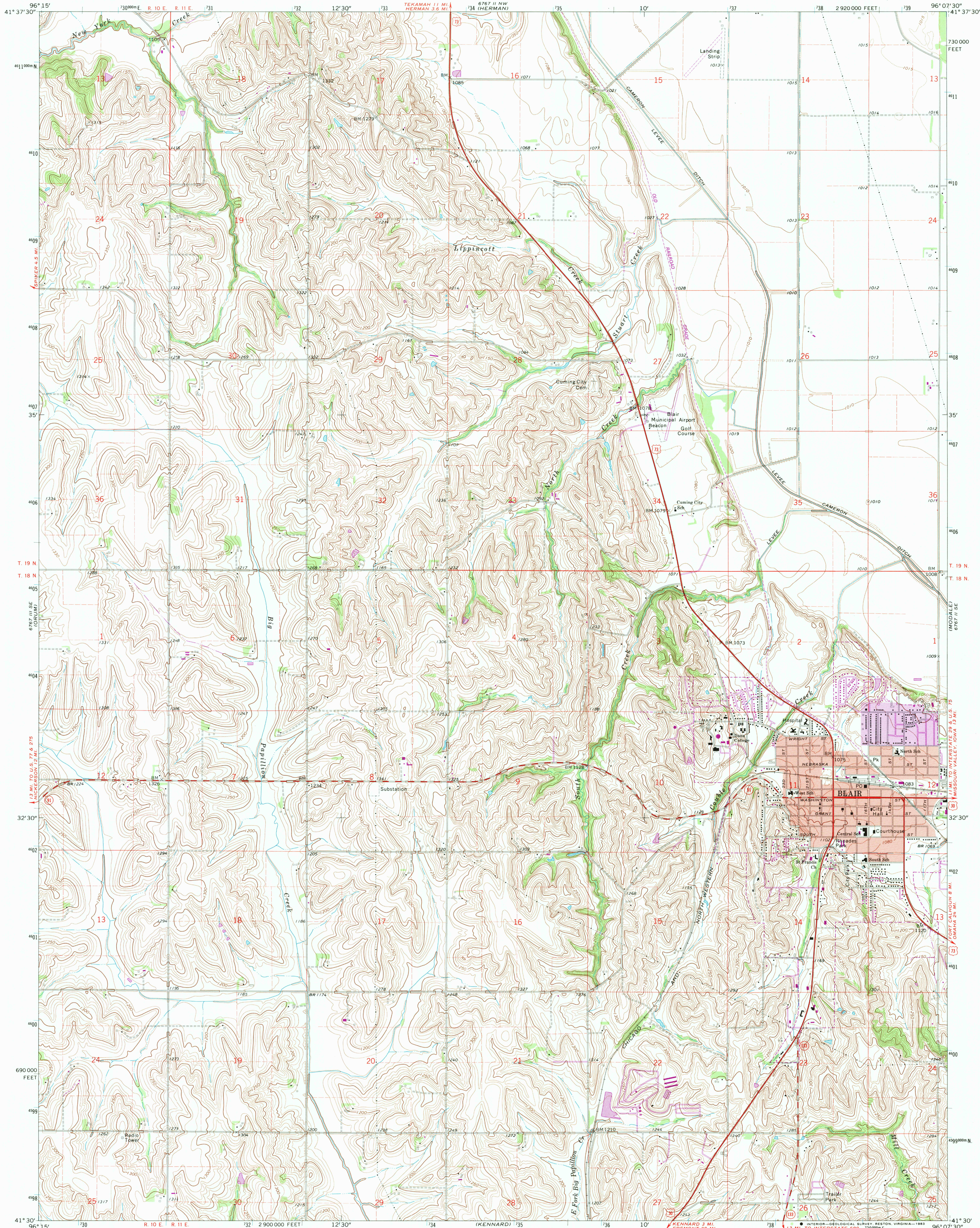


UNITED STATES
DEPARTMENT OF THE INTERIOR
GEOLOGICAL SURVEY

BLAIR QUADRANGLE
NEBRASKA—WASHINGTON CO.
7.5 MINUTE SERIES (TOPOGRAPHIC)



Mapped, edited, and published by the Geological Survey

Control by USGS and USC&GS

Topography by photogrammetric methods from aerial

photographs taken 1965 and planetable surveys 1970

Polyconic projection. 1927 North American datum

10,000-foot grid based on Nebraska coordinate system, south zone

1000-meter Universal Transverse Mercator grid ticks,

zone 14, shown in blue

Red tint indicates areas in which only landmark buildings are shown

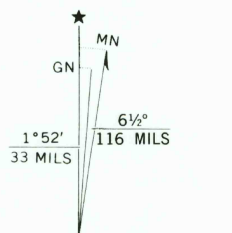
Fine red dashed lines indicate selected fence and field lines where

generally visible on aerial photographs. This information is unchecked

To place on the predicted North American Datum 1983,

move the projection lines 4 meters north and

24 meters east as shown by dashed corner ticks



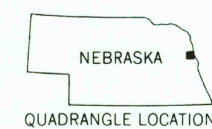
SCALE 1:24 000

CONTOUR INTERVAL 10 FEET

DOTTED LINES REPRESENT 5-FOOT CONTOURS

NATIONAL GEODETIC VERTICAL DATUM OF 1929

THIS MAP COMPLIES WITH NATIONAL MAP ACCURACY STANDARDS
FOR SALE BY U. S. GEOLOGICAL SURVEY, DENVER, COLORADO 80225
OR RESTON, VIRGINIA 22092
A FOLDER DESCRIBING TOPOGRAPHIC MAPS AND SYMBOLS IS AVAILABLE ON REQUEST



ROAD CLASSIFICATION

Primary highway, all weather, Light-duty road, all weather,

hard surface, improved surface

Secondary highway, all weather, Unimproved road, fair or dry

hard surface, weather

U. S. Route State Route

BLAIR, NEBR.

N4130—W9607.5/7.5

1970

PHOTOREVISED 1983

DMA 6767 II SW—SERIES V875

Revisions shown in purple compiled from aerial
photographs taken 1981 and other sources
This information not field checked. Map edited 1983
Purple tint indicates extension of urban area

RETURN TO:
USGS AND HISTORICAL MAP ARCHIVES