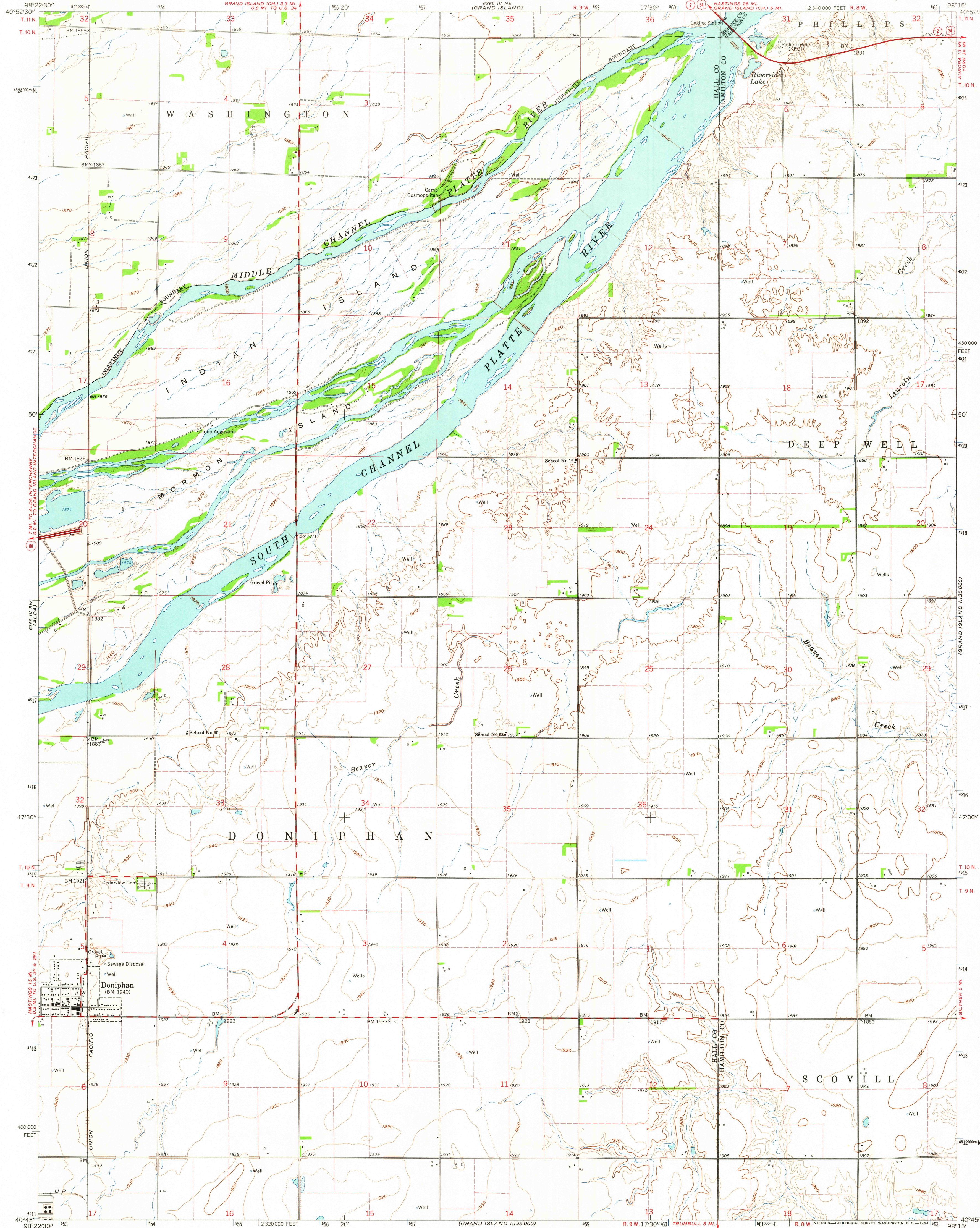


UNITED STATES
DEPARTMENT OF THE INTERIOR
GEOLOGICAL SURVEY

DONIPHAN QUADRANGLE
NEBRASKA
7.5 MINUTE SERIES (TOPOGRAPHIC)



Mapped, edited, and published by the Geological Survey as part of the Department of the Interior program for the development of the Missouri River Basin Control by USGS and USC&GS
Topography by photogrammetric methods from aerial photographs taken 1951 and planetable surveys 1962
Polyconic projection. 1927 North American datum
10,000-foot grid based on Nebraska coordinate system, south zone
1000-meter Universal Transverse Mercator grid ticks, zone 14, shown in blue
Fine red dashed lines indicate selected fence and field lines where generally visible on aerial photographs. This information is unchecked

SCALE 1:24,000
1 1000 0 1000 2000 3000 4000 5000 6000 7000 FEET
1 KILOMETER
CONTOUR INTERVAL 10 FEET
DOTTED LINES REPRESENT 5-FOOT CONTOURS
DATUM IS MEAN SEA LEVEL
THIS MAP COMPLIES WITH NATIONAL MAP ACCURACY STANDARDS
FOR SALE BY U. S. GEOLOGICAL SURVEY, DENVER 25, COLORADO OR WASHINGTON 25, D. C.
A FOLDER DESCRIBING TOPOGRAPHIC MAPS AND SYMBOLS IS AVAILABLE ON REQUEST

ROAD CLASSIFICATION
Heavy-duty ——— Light-duty ———
Medium-duty ——— Unimproved dirt ———
Interstate Route U.S. Route State Route
DONIPHAN, NEBR.
N4045-W9815/7.5
1962
AMS 6365 IV SE-SERIES V875

FEB 19 1964
2665
USGS
Historical File
Topographic Division