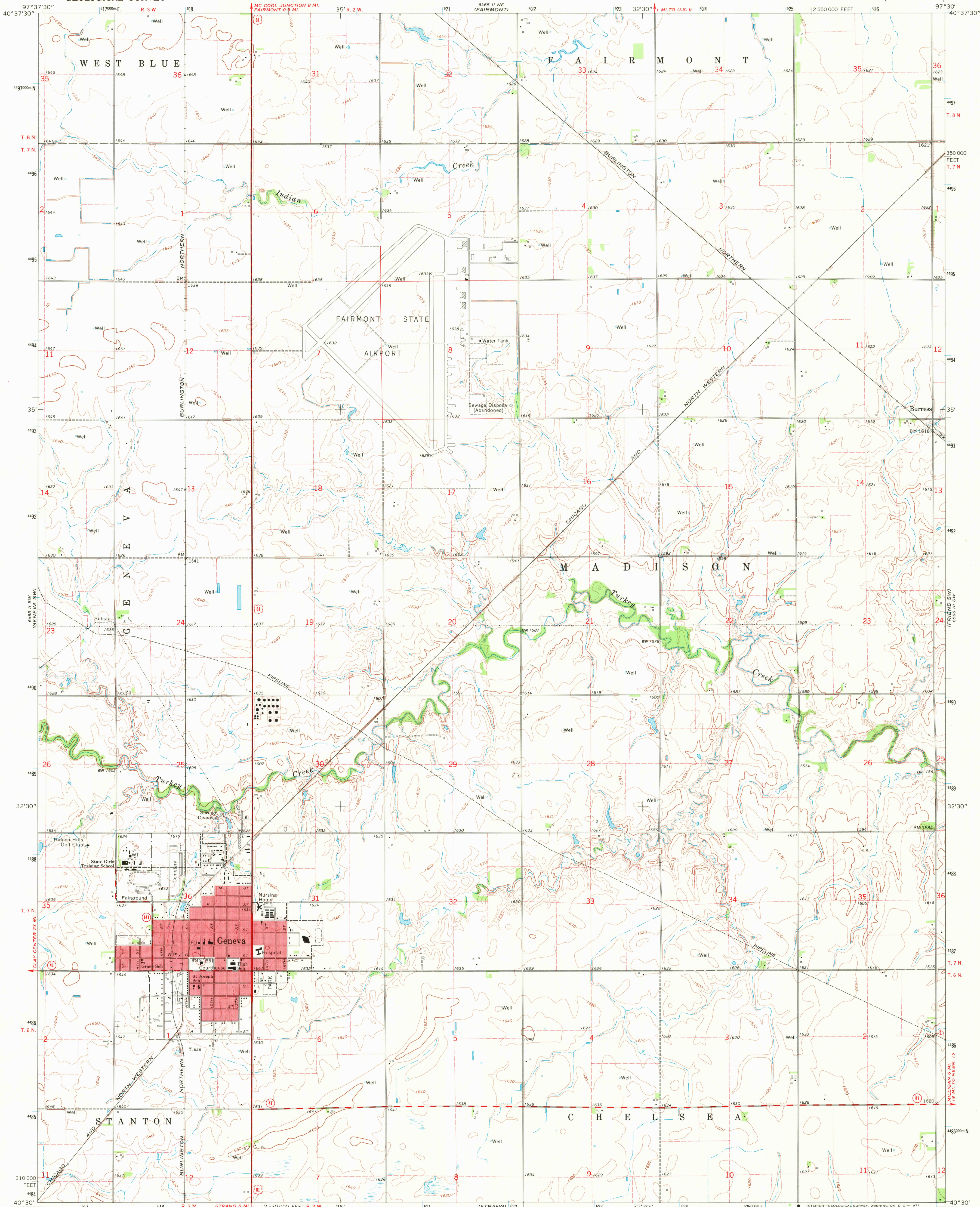
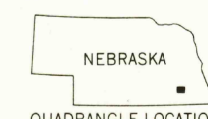
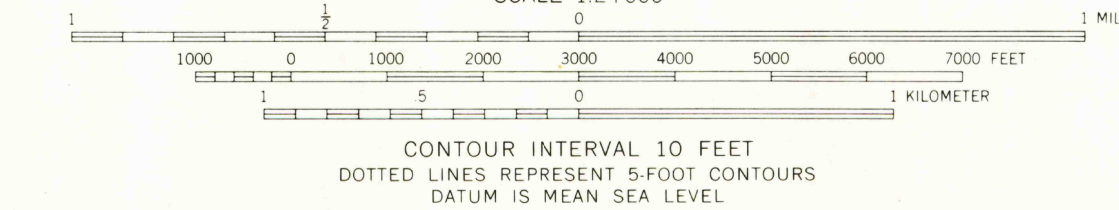
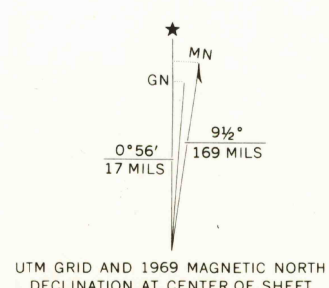


UNITED STATES  
DEPARTMENT OF THE INTERIOR  
GEOLOGICAL SURVEY

GENEVA QUADRANGLE  
NEBRASKA—FILLMORE CO.  
7.5 MINUTE SERIES (TOPOGRAPHIC)



Mapped, edited, and published by the Geological Survey as part of the Department of the Interior program for the development of the Missouri River Basin. Control by USGS and USC&GS. Topography by photogrammetric methods from aerial photographs taken 1967. Field checked 1969. Polyconic projection. 1927 North American datum. 10,000-foot grid based on Nebraska coordinate system, south zone 1000-meter Universal Transverse Mercator grid ticks zone 14, shown in blue. Red tint indicates area in which only landmark buildings are shown. Fine red dashed lines indicate selected fence and field lines where generally visible on aerial photographs. This information is unchecked.



ROAD CLASSIFICATION  
Primary highway, all weather, hard surface  
Secondary highway, all weather, hard surface  
Light-duty road, all weather, improved surface  
Unimproved road, fair or dry weather  
U. S. Route  
State Route

USGS  
HISTORICAL FILE  
TOPOGRAPHIC DIVISION

GENEVA, NEBR.  
N4030—W9730/7.5  
1969  
AMS 6465 II SE—SERIES V875