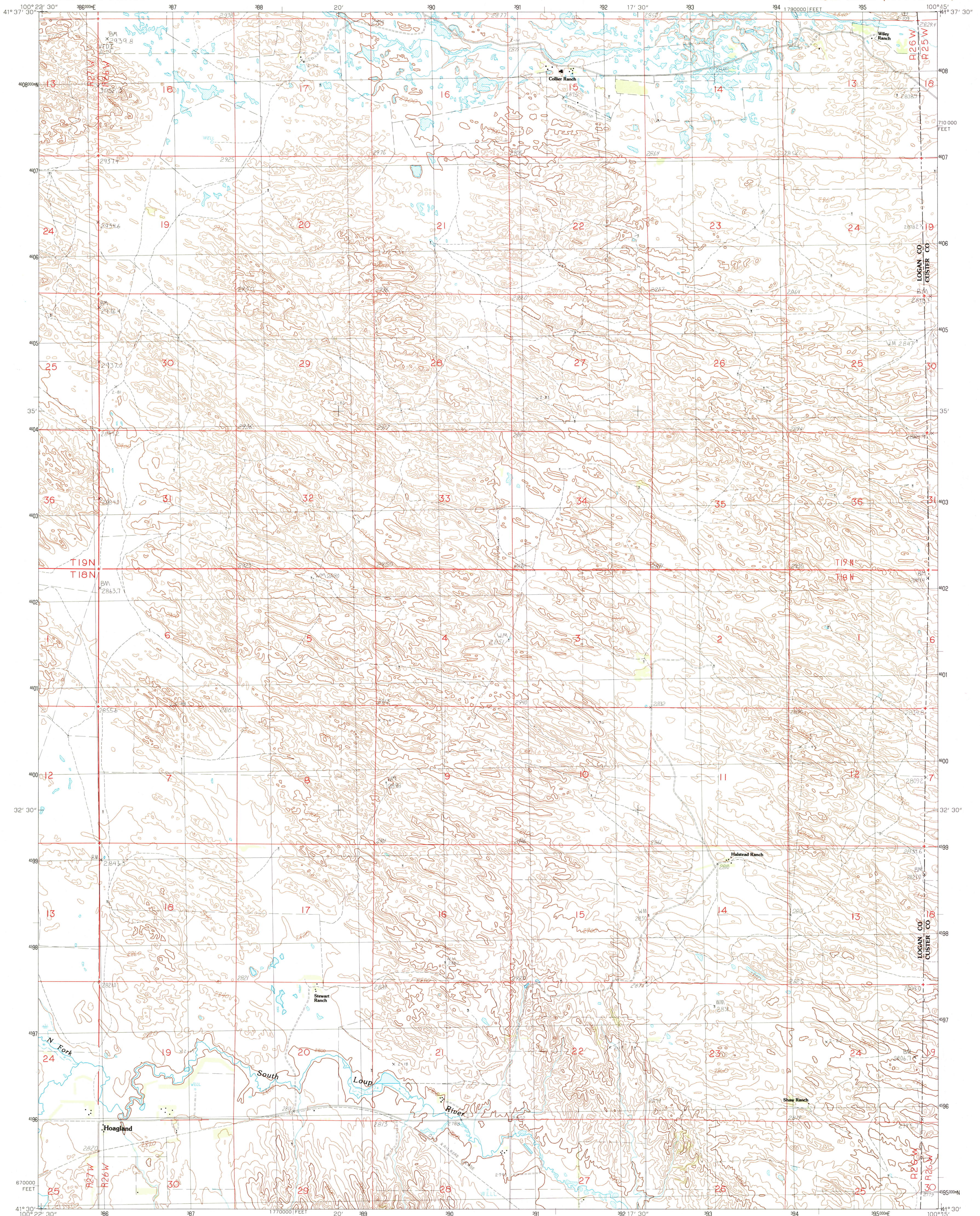


UNITED STATES
DEPARTMENT OF THE INTERIOR
GEOLOGICAL SURVEY

HOAGLAND QUADRANGLE
NEBRASKA
7.5 MINUTE SERIES (TOPOGRAPHIC)



PRODUCED BY THE UNITED STATES GEOLOGICAL SURVEY
CONTROL BY USGS AND NOS/NOAA 1983
COMPILED FROM AERIAL PHOTOGRAPHS TAKEN 1986
FIELD CHECKED 1986. MAP EDITED 1986
PROJECTION LAMBERT CONFORMAL CONIC
GRID: 1000-METER UNIVERSAL TRANSVERSE MERCATOR ZONE 14
10,000-FOOT STATE GRID TICS NEBRASKA, SOUTH ZONE
UTM GRID DECLINATION 980° WEST
1986 MAGNETIC NORTH DECLINATION 980° EAST
VERTICAL DATUM NATIONAL GEODETIC VERTICAL DATUM OF 1929
HORIZONTAL DATUM 1927 NORTH AMERICAN DATUM
To place on the predicted North American Datum 1983,
move the projection lines as shown by dashed corner ticks
(5 meters north and 35 meters east)
No distinction made between houses, barns, and other buildings

PROVISIONAL MAP
Produced from original
manuscript drawings. Infor-
mation shown as of date of
photography.

SCALE 1:24 000
MILES
0 1 2 3 4 5 6 7 8 9 10
FEET
0 1000 2000 3000 4000 5000 6000 7000 8000 9000 10 000
KILOMETERS
0 1 2
METERS
CONTOUR INTERVAL 20 FEET
CONTROL ELEVATIONS SHOWN TO THE NEAREST 0.1 FOOT
OTHER ELEVATIONS SHOWN TO THE NEAREST FOOT
To convert feet to meters multiply by .3048
To convert meters to feet multiply by 3.2808
THIS MAP COMPLIES WITH NATIONAL MAP ACCURACY STANDARDS
FOR SALE BY U. S. GEOLOGICAL SURVEY
DENVER, COLORADO 80225, OR RESTON, VIRGINIA 22092

1	2	3	1 Mudd Lake
2	3	4	2 Hoagland NE
3	4	5	3 Lincoot NW
4	5	6	4 Tarbox Lake
5	6	7	5 Lincoot SW
6	7	8	6 Candy
			7 Logan
			8 Arnold

ADJOINING 7.5 QUADRANGLE NAMES

ROAD LEGEND
Improved Road
Unimproved Road
Trail
Interstate Route U. S. Route State Route

HOAGLAND, NEBRASKA
PROVISIONAL EDITION 1986

41100-E3-TF-024

USGS MAPS DIVISION
SEP 15 1987
RECORD COPY