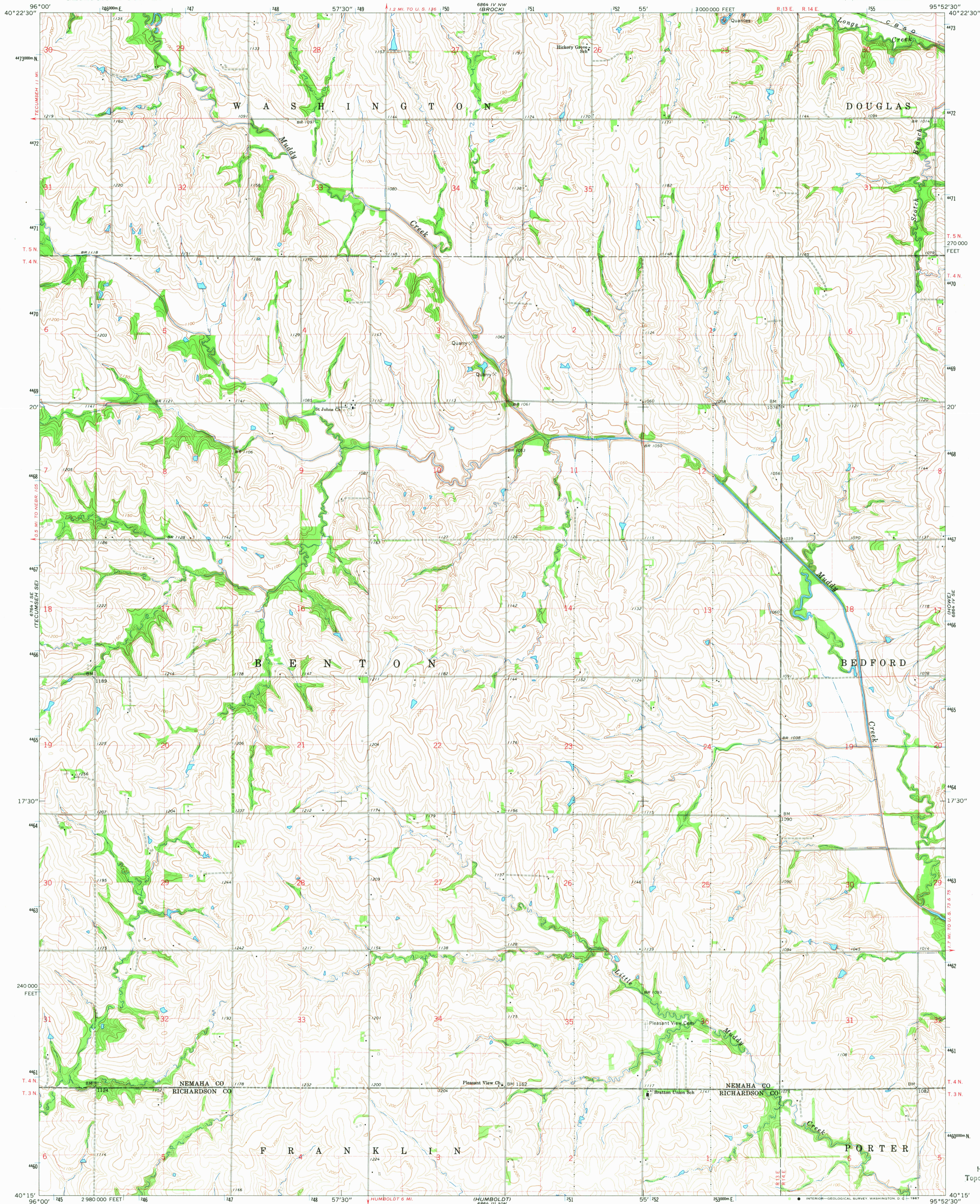
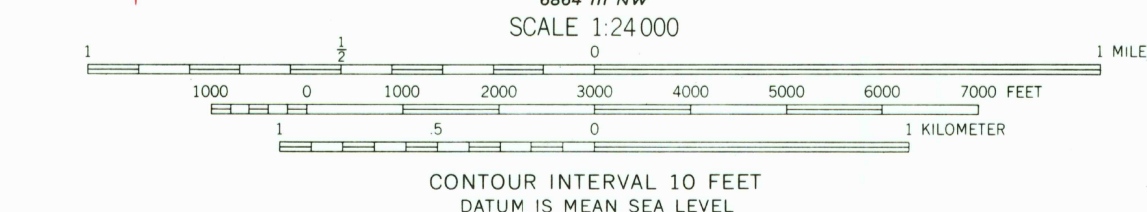
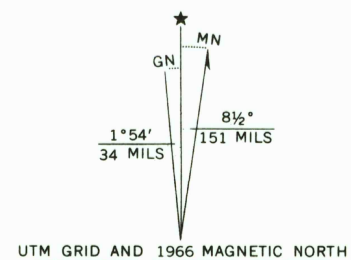


UNITED STATES
DEPARTMENT OF THE INTERIOR
GEOLOGICAL SURVEY

HOWE SW QUADRANGLE
NEBRASKA
7.5 MINUTE SERIES (TOPOGRAPHIC)
SW 1/4 HOWE 15' QUADRANGLE



Mapped, edited, and published by the Geological Survey as part of the Department of the Interior program for the development of the Missouri River Basin. Control by USGS and USC&GS. Topography by photogrammetric methods from aerial photographs taken 1965. Field checked 1966. Polyconic projection. 1927 North American datum 10,000-foot grid based on Nebraska coordinate system, south zone 1000-meter Universal Transverse Mercator grid ticks, zone 15, shown in blue. Fine red dashed lines indicate selected fence and field lines where generally visible on aerial photographs. This information is unchecked.



THIS MAP COMPLIES WITH NATIONAL MAP ACCURACY STANDARDS
FOR SALE BY U.S. GEOLOGICAL SURVEY, DENVER, COLORADO 80225, OR WASHINGTON, D.C. 20242
A FOLDER DESCRIBING TOPOGRAPHIC MAPS AND SYMBOLS IS AVAILABLE ON REQUEST

U.S.G.S.
NEBRASKA
FILE COPY
TOPOGRAPHIC DIVISION

ROAD CLASSIFICATION
Light-duty ————— Unimproved dirt —————

HOWE SW, NEBR.
SW 1/4 HOWE 15' QUADRANGLE
N4015—W9552.5/7.5

1966

AMS 6864 IV SW—SERIES V875

USGS
Historical File
Topographic Division

2665
MAR 1 1968