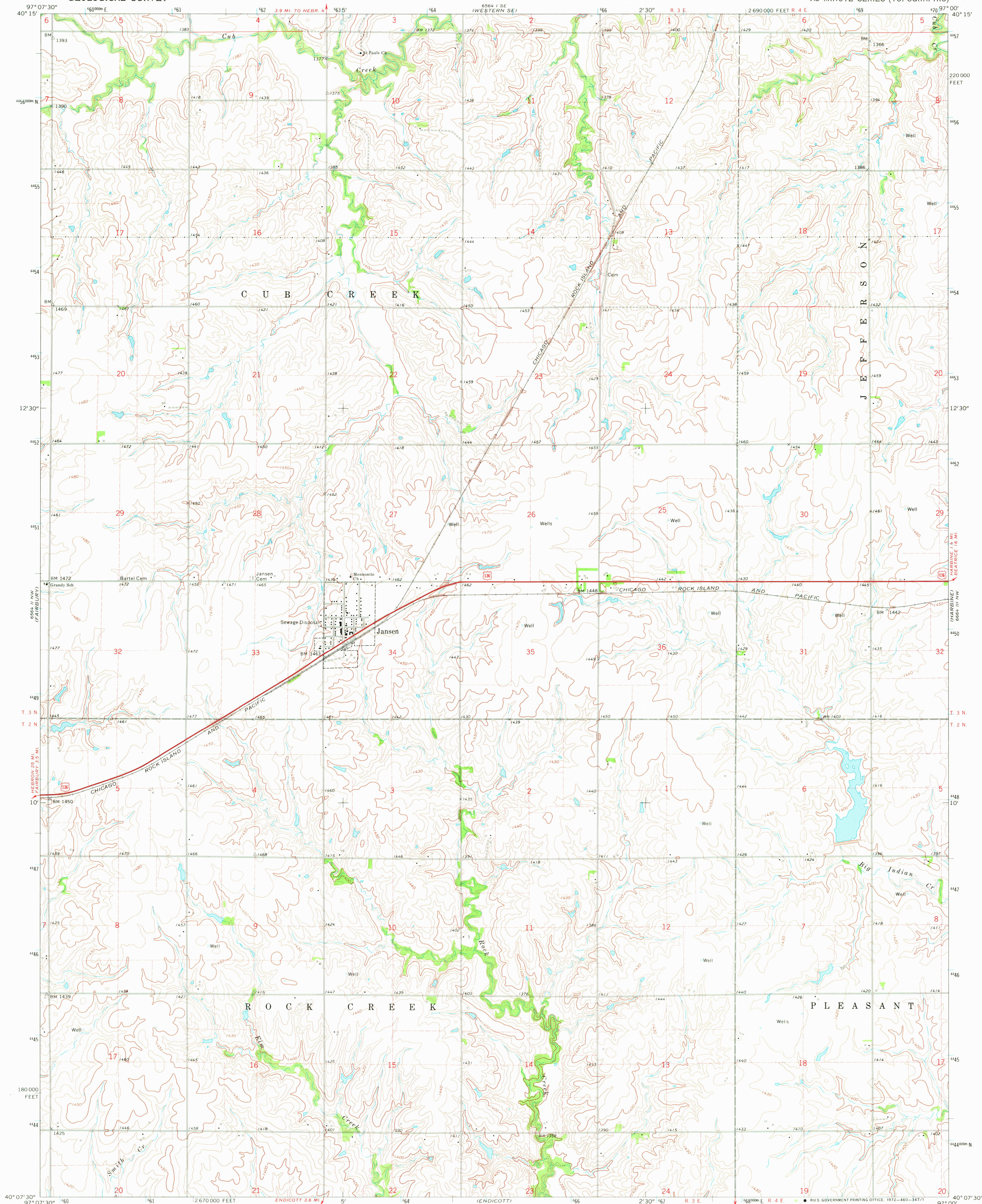
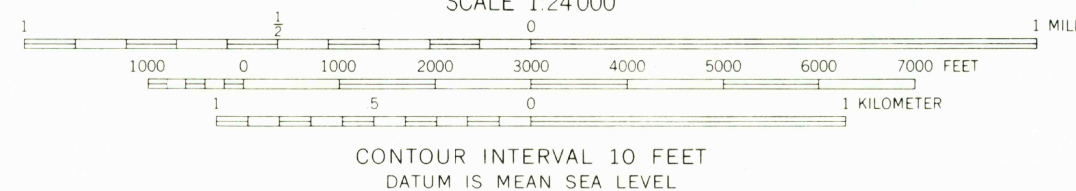
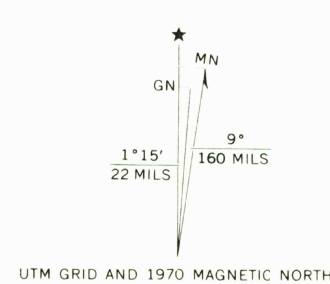


UNITED STATES  
DEPARTMENT OF THE INTERIOR  
GEOLOGICAL SURVEY

JANSEN QUADRANGLE  
NEBRASKA—JEFFERSON CO.  
7.5 MINUTE SERIES (TOPOGRAPHIC)



Mapped, edited, and published by the Geological Survey  
as part of the Department of the Interior program  
for the development of the Missouri River Basin  
Control by USGS and USC&GS  
Topography by photogrammetric methods from aerial  
photographs taken 1967-68. Field checked 1970  
Polyconic projection. 1927 North American datum  
10,000-foot grid based on Nebraska coordinate system, south zone  
1000-meter Universal Transverse Mercator grid ticks,  
zone 14, shown in blue  
Fine red dashed lines indicate selected fence and field lines where  
generally visible on aerial photographs. This information is unchecked



THIS MAP COMPLIES WITH NATIONAL MAP ACCURACY STANDARDS  
FOR SALE BY U. S. GEOLOGICAL SURVEY, DENVER, COLORADO 80225, OR WASHINGTON, D. C. 20042  
A FOLDER DESCRIBING TOPOGRAPHIC MAPS AND SYMBOLS IS AVAILABLE ON REQUEST



ROAD CLASSIFICATION  
Primary highway, all weather, Light-duty road, all weather,  
hard surface improved surface  
Unimproved road, fair or dry  
weather  
U. S. Route

JANSEN, NEBR.  
N4007.5—W9700.7.5

1970

AMS 6564 II NE—SERIES V875

USGS  
Historical File  
Topographic Division

USGS  
Historical File  
Topographic Division

AUG 22 1972

Denver  
2000  
50p/mw