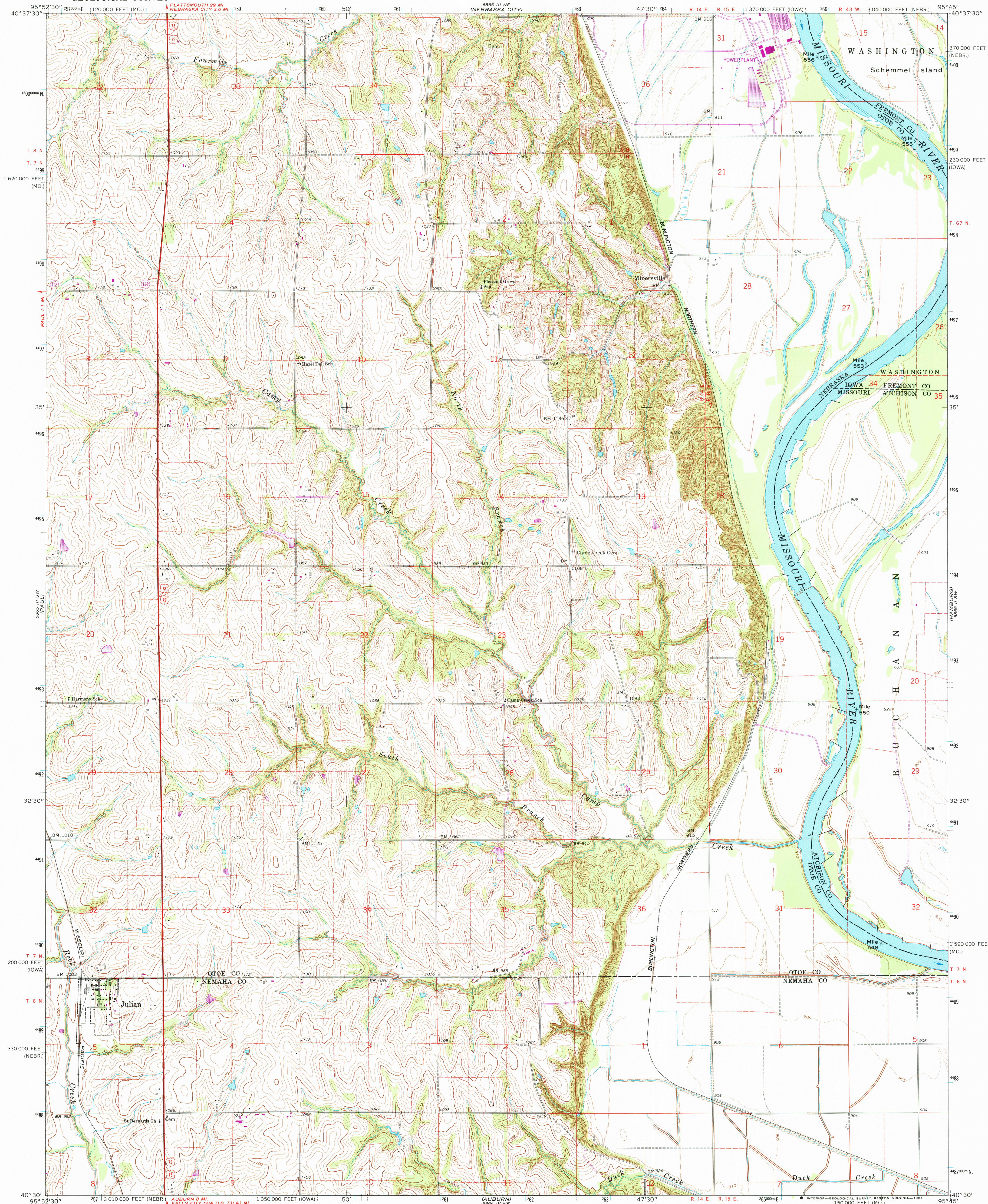


UNITED STATES
DEPARTMENT OF THE INTERIOR
GEOLOGICAL SURVEY

JULIAN QUADRANGLE
NEBRASKA—MISSOURI—IOWA
7.5 MINUTE SERIES (TOPOGRAPHIC)



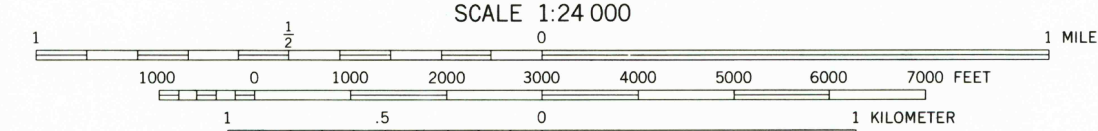
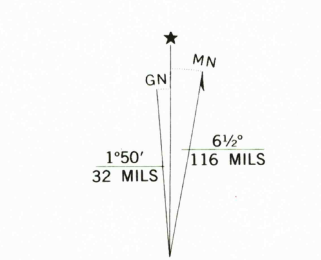
Mapped, edited, and published by the Geological Survey as part of the Department of the Interior program for the development of the Missouri River Basin Control by USGS and USC&GS

Topography by photogrammetric methods from aerial photographs taken 1965 and planetable surveys 1966

Polyconic projection. 1927 North American datum 10,000-foot grids based on Nebraska coordinate system, south zone, Missouri coordinate system, west zone, and Iowa coordinate system, south zone

1000-meter Universal Transverse Mercator grid ticks, zone 15, shown in blue

To place on the predicted North American Datum 1983, move the projection lines 3 meters north and 23 meters east as shown by dashed corner ticks



CONTOUR INTERVAL 10 FEET
DOTTED LINES REPRESENT 5-FOOT CONTOURS
NATIONAL GEODETIC VERTICAL DATUM OF 1929
THIS MAP COMPLIES WITH NATIONAL MAP ACCURACY STANDARDS
FOR SALE BY U.S. GEOLOGICAL SURVEY, DENVER, COLORADO 80225, OR RESTON, VIRGINIA 22092
DIVISION OF GEOLOGY AND LAND SURVEY
MISSOURI DEPARTMENT OF NATURAL RESOURCES, ROLLA, MISSOURI 65401
AND IOWA GEOLOGICAL SURVEY, IOWA CITY, IOWA 52240
A FOLDER DESCRIBING TOPOGRAPHIC MAPS AND SYMBOLS IS AVAILABLE ON REQUEST



ROAD CLASSIFICATION

Heavy-duty ——— Light-duty ———
Medium-duty ——— Unimproved dirt ———
U. S. Route ——— State Route ———

JULIAN, NEBR.-MO.-IOWA
40095-E7-TF-024

1966
PHOTOREVISED 1984
DMA 6865 III SE SERIES V875

Revisions shown in purple compiled from aerial photographs taken 1982 and other sources
This information not field checked. Map edited 1984

RETURN TO:
USGS AND HISTORICAL MAP ARCHIVES