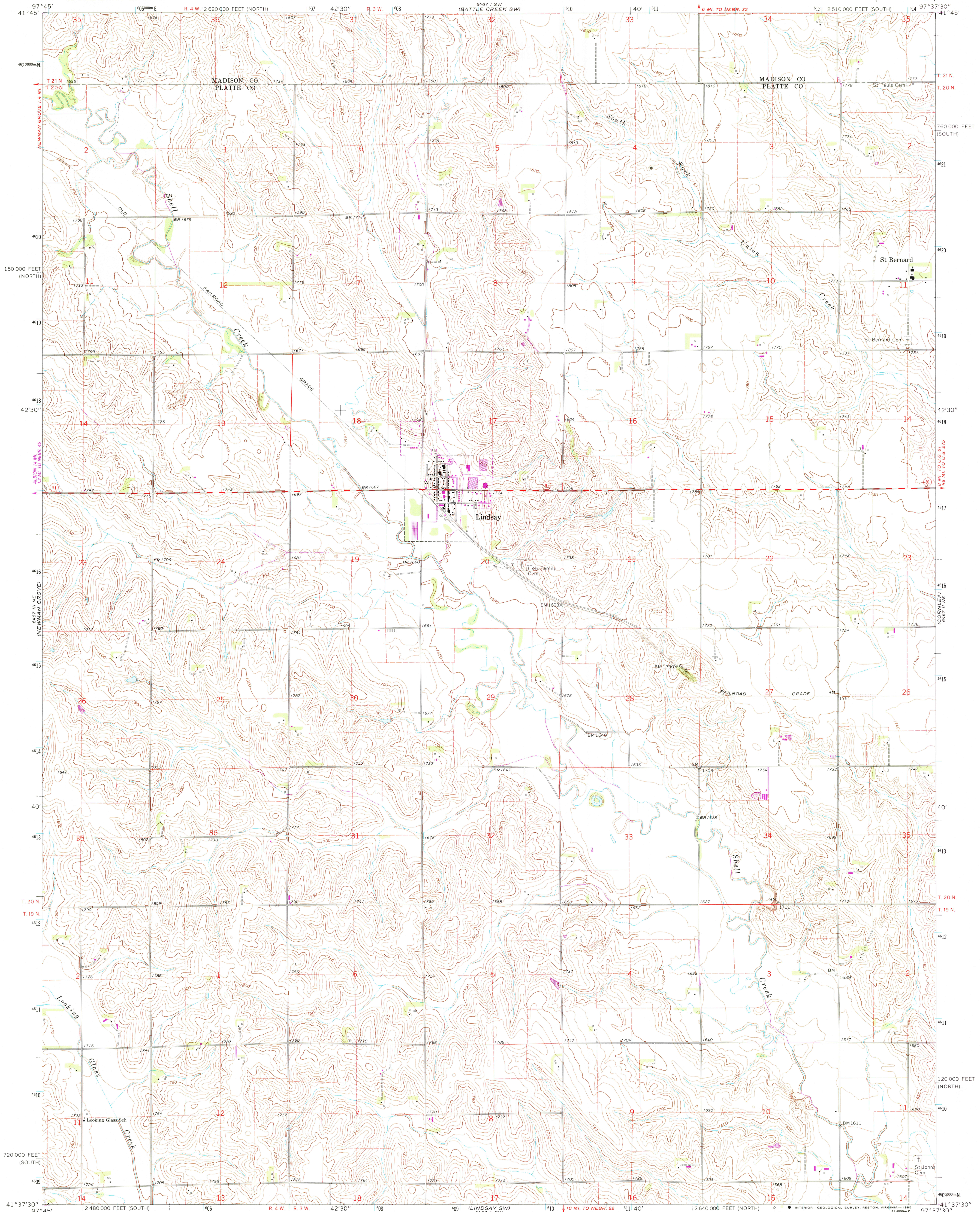


UNITED STATES
DEPARTMENT OF THE INTERIOR
GEOLOGICAL SURVEY

LINDSAY QUADRANGLE
NEBRASKA
7.5 MINUTE SERIES (TOPOGRAPHIC)

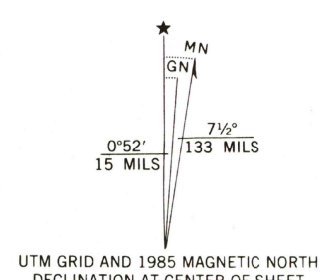


Mapped, edited, and published by the Geological Survey
as part of the Department of the Interior program
for the development of the Missouri River Basin
Control by USGS and USC&GS

Topography by photogrammetric methods from aerial
photographs taken 1965. Field checked 1966

Polyconic projection. 1927 North American datum
10,000-foot grids based on Nebraska coordinate system,
south and north zones
1000-meter Universal Transverse Mercator grid ticks,
zone 14, shown in blue

To place on the predicted North American Datum 1983,
move the projection lines 5 meters north and
28 meters east as shown by dashed corner ticks
Fine red dashed lines indicate selected fence and field lines where
generally visible on aerial photographs. This information is unchecked



SCALE 1:24 000
CONTOUR INTERVAL 10 FEET
NATIONAL GEODETTIC VERTICAL DATUM OF 1929

THIS MAP COMPLIES WITH NATIONAL MAP ACCURACY STANDARDS
FOR SALE BY U. S. GEOLOGICAL SURVEY, DENVER, COLORADO 80225, OR RESTON, VIRGINIA 22092
A FOLDER DESCRIBING TOPOGRAPHIC MAPS AND SYMBOLS IS AVAILABLE ON REQUEST

ROAD CLASSIFICATION
Medium-duty ——— Light-duty ———
Unimproved dirt ———
○ State Route



Revisions shown in purple and woodland compiled
from aerial photographs taken 1981 and other sources
This information not field checked. Map edited 1985

LINDSAY, NEBR.
41097-F6-TF-024

1966
PHOTOREVISED 1985
DMA 6467 II NW-SERIES V875

